

**HEREFORD**

**HEBEEEOBD**

*THE NEXT GENERATION*

***SEMEN & EMBRYO DIRECTORY***

**2013**

# Herefords - The Next Generation 2013 Semen and Embryo Directory



This year's – The Next Generation, Semen and Embryo directory has as strong an offering as we have ever had and coming out of the World Hereford Conference held in July of 2012, there hasn't been a better time to promote Hereford genetics to Hereford breeders across Canada and around the world.

This directory has been mailed to the CHA membership as well as to our national and international subscribers. Bundles of ten have also been mailed to world Hereford member associations, to continue to increase the visibility of this directory and the genetics offered by Canadian Hereford breeders. It will also be distributed at Hereford events throughout the year.

Comments continue to be positive about the Semen and Embryo directory and breeders agree that this is a tool provided by the Canadian Hereford Association which can increase the visibility of the genetics available. The cattle industry continues to improve with prices better than they ever been and Hereford cattle increasing in demand. If you are looking to add something new or different to your program, as you look toward the future, this directory will give you many options.

The greatest advantage continues to be that breeders' direct contact information is included in their ads, so interested buyers can either contact them or their respective designated agents directly, for the semen or embryos offered for sale. In most cases, therefore, 100 per cent of sales go directly to the breeder. Those selling semen also have their customer's information and can

call this year to see how the calves look from the semen or embryos sold in 2012.

We invite readers and recipients of this directory to contact the advertisers listed if the genetics and breeding programs advertised are of interest. Our advertising breeders would be happy to discuss their programs with you and help you find the proper fit for your program.

Please don't hesitate to contact me if you are interested in advertising in the 2013 directory. We also welcome comments and suggestions for consideration relating to future issues of this directory.

Enjoy the fourth annual pages of the 2013 Herefords – The Next Generation.

Sincerely,

**Brad Dubeau**

Director of Communications

Canadian Hereford Association

Phone: 1.888.836.7242 Fax: 1.888.824.2329

Email: brad@hereford.ca

View The Directory online at [www.hereford.ca](http://www.hereford.ca)

## Table of Contents

Hirsche Herefords & Angus LTD .....	3	Braun Ranch .....	21
NJW Polled Herefords and River Valley Polled Herefords and Perks Ranch .....	4-5	Brost Land & Cattle .....	22
Copper Creek Ranch.....	6	Wyatt Farms.....	23
Church Ranch .....	7	Lilybrook Herefords .....	24-25
Elmlodge Polled Herefords.....	8	SS Cattle Co. ....	25
Palsson Herefords .....	9	Shar-Lo Farms .....	26
K-Cow Ranch .....	10	Ulrich Hereford Ranching Inc.....	27
Topp Herefords.....	11	XTC Hereford Farms .....	27
Big Gully Farms.....	12-14	Pugh Farms.....	28
Redgate Polled Herefords .....	15	Skelton Cattle Co. ....	28
Alta Genetics.....	16	NBG Polled Herefords.....	29
LCI Doenz Ranches LTD.....	17	2013 Gestation Table .....	31
Richardson Ranch .....	18-19	Are you prepared for breeding season? .....	32
Kootenay Polled Herefords.....	20	EPDs made easy .....	32
		Hereford EPD Averages .....	35

The Canadian Hereford Association is not responsible for any transactions that take place as a result of advertising in Herefords - The Next Generation, 2013 Semen and Embryo Directory.

The Canadian Hereford Association is pleased to present this Semen and Embryo Directory on behalf of our advertisers.

# UPS UPTOWN ET

Registration No.: C02968957 Born: March 21, 2010 Semen Certificates Required: No

Price: **\$85.00/Dose minimum 10 Doses**

Semen Qualifies for: Canada, USA & Australia



EPDS	CE	BW	WW	YW	MM	TM	MCE	SC	CW	Stay	MPI	FMI	FAT	REA	MARB
3.4	2.5	53.6	84.9	24.3	51.1	2.3	0.7	110.6	-	-	-	-0.028	0.59	0.18	

ACC	PE	.21	.20	.20	.17	-	PE	.16	.17	-	-	-	.15	.15	.14
-----	----	-----	-----	-----	-----	---	----	-----	-----	---	---	---	-----	-----	-----

THM DURANGO 4037  
CRR ABOUT TIME 743  
CRR D03 CASSIE 206

GH NEON 17N C02827131  
**UPS MISS NEON 7868 1ET**  
UPS MISS DOMINO 2766

CS BOOMER 29F  
THM 7085 VICTRA 9036  
SHF INTERSTATE 20X D03  
CRR 475E CASSIE 838  
GH DIFFERENCE BRITISHER 45L  
GH SIR SIMBA LASS 107K  
HH ADVANCE 767G 1ET  
UPS MISS MILE HIGH 0839

2013 calves are light birth weight with eye pigment!



**2012 CANADIAN WESTERN AGRIBITION SUPREME CHAMPION BULL**

Hirsche Herefords and Angus LTD  
Grant & Annette Hirsche

Phone: (403) 652-1173 Grant's Cell: (403) 652-8254  
#4-34 Southridge Drive, Okotoks, AB T1S 2G5  
owners@hirsche.com www.hirsche.com

2012 World Hereford Conference  
Grand Champion Horned Bull

2013 National Western Stock Show  
Reserve Grand Champion Horned Bull

Owners of bull

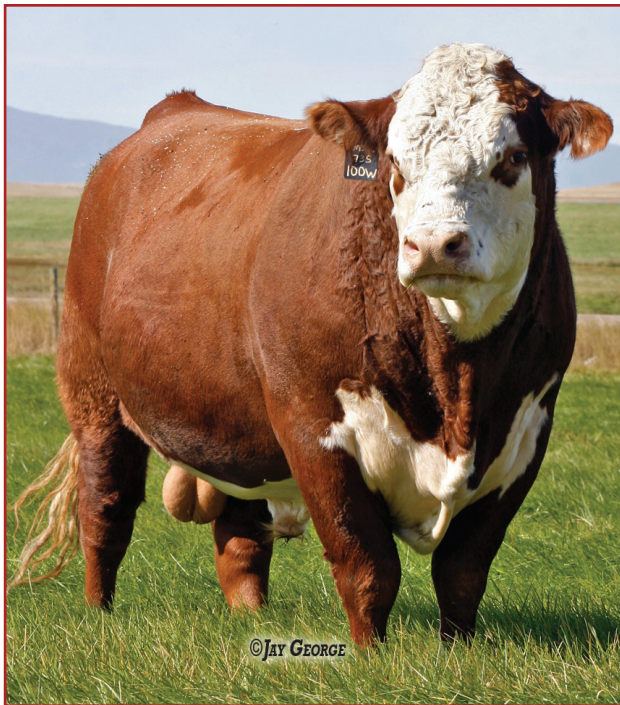
Hirsche Herefords & Angus LTD  
Upstream Ranch  
WSV Farm & Ranch LLC

# NJW 73S M326 TRUST 100W ET

Registration No.: C02938213 Born: February 24, 2009 BW: 88 lbs. WW: 716 lbs. <sup>adj</sup> YW: 1,185 lbs. <sup>adj</sup> Semen Certificates Required: Yes

Price: \$35.00/Straw \$75.00/Certificate

For Canadian semen orders contact: River Valley Polled Herefords or T Bar C



- A US HEREFORD 12- TRAIT LEADER! Breed leading genetics with extra pigment, shape, style, eye appeal and balance!
- Used heavily at NJW the past three years...a terrific set of daughters coming into production this Spring ! First sons averaged \$8635. in the NJW 2012 Bull Sale! Avg. birth weight at NJW on 2011 Trust calf crop 82 lbs...2012 calf crop 84 lbs.
- Dam is a beautiful, elite P606 daughter backed by a cow family known for superb udders and the ability to produce at the top every year!
- Sire of 2012 Toronto Royal Reserve Champion Female and Intermediate Heifer Calf Champion owned by River Valley Polled Herefords



USA EPDS	CE Dir.	BW	WW	YW	M	Milk & Growth	CE Mat.	MCE	SC	Fat	REA	MARB
-1.8	3.0	64	121	29	61	3.1	123	1.6	-0.042	1.31	0.17	
ACC	.30	.77	.65	.61	.22	.00	.23	.35	.33	.43	.43	.39



NATIONAL CHAMPION POLLED HEREFORD BULL & SUPREME CHAMPION HEREFORD – DENVER 2012

RRH MR FELT 3008  
KCF BENNETT 3008 M326  
KCF MISS 459 F284

FELTONS 517  
RRH MS VICT 6191  
FELTONS 459  
KCF MISS X4 B156

PW VICTOR BOOMER P606  
NJW P606 72N DAYDREAM 73S  
NJW 94J DEW 72N

REMITALL BOOMER 46B  
PW VICTORIA 964 8114  
RU 20X BOULDER 57G  
NJW D32 CLAIRE 94J



73S – DAM OF 100W

# NJW

**POLLED HEREFORDS**

NJW Bull Sale –  
April 10, 2013

Ned & Jan Ward

247A Decker Rd, Sheridan, WY 82801  
(307) 672-3248

Ned's Cell (307) 751-8289  
njwardherefords@gmail.com  
Cody & Shawna Chabot

Jan's Cell (307) 751-9470  
www.NJWHerefords.com  
(541) 410-5201



River Valley  
Polled Herefords

Elwyn, Donald  
& Pauline Ernbury

240 Ernbury Rd., R.R. 1, Newburgh, ON K0K 2S0  
MAIN OFFICE: (613) 378-6632 CATTLE OFFICE: (613) 378-2701  
FAX: (613) 378-1646 RES: (613) 378-2224  
rivervalleyherefords@kos.net www.rivervalleyherefords.com

Genetic Designs VII  
Bull Sale Sept 20, 2013

# NJW 73S W18 HOMETOWN 10Y ET

American Registration No.: P43214853 Born: February 3, 2011 BW: 90 lbs WW: 739 lbs<sup>adj</sup> YW 1,204 lbs<sup>adj</sup> Semen Certificates Required: Yes

Price: \$35.00/Straw \$75.00/Certificate

For Canadian semen orders contact: Billy and Juanita Elmhirst or T Bar C



- BALANCED in the Flesh...BALANCED on Paper !!!
- FUNCTIONAL , Deep, Thick, Big Topped and Bred to Produce The NEXT GENERATION !
- His Dam ..73S sits at the Top for Maternal Cow Power and is the Dam of both the 2012 and 2013 National Champion Polled Bulls.
- A full Sister to 10Y was Res. Jr Yrl Champion Polled Heifer Denver 2013---a full brother was second to him in class. A maternal Brother was Denver Champion in 2012.



USA EPDS	CE Dir.	BW	WW	YW	M	Milk & Growth	CE Mat.	MCE	SC	Fat	REA	MARB
-0.2	2.5	48	89	23	47	1.5	98	1.3	0.003	0.75	0.05	
ACC	P	.24	.23	.23	.13	-	P	.17	.11	.22	.22	.20



NATIONAL CHAMPION POLLED HEREFORD BULL – DENVER 2013

Canadian Semen Contact: **Billy and Juanita Elmhirst**  
 1870 Settlers Line, Indian River, Ont KOL 2B0  
 Home (705) 295-2708 | Billy's cell (705) 761-0896 | Juanita's cell (705) 772-2697  
 ircc@nexicom.net

KCF BENNETT 3008 M326  
**SHF WONDER M326 W18 ET**  
 SHF GOVERNESS 236G L37

PW VICTOR BOOMER P606  
**NJW P606 72N DAYDREAM 73S**  
 NJW 94J DEW 72N

RRH MR FELT 3008  
 KCF MISS 459 F284  
 MM RSM STOCKMASTER 512  
 SHF INTERSTATE D03 G80

REMITALL BOOMER 46B  
 PW VICTORIA 964 8114  
 RU 20X BOULDER 57G  
 NJW D32 CLAIRE 94J



73S – DAM OF 10Y

**T Bar C Cattle Co. Ltd. – Chris Poley (306) 220-5006**

#4 3342 Millar Ave., Saskatoon, Saskatchewan S7K 7G9

Ph: (306) 933-4200 | Fax: (306) 934-0744 | info@tbarc.com | www.buyagro.com

**Ned & Jan Ward**

247A Decker Rd, Sheridan, WY 82801  
 (307) 672-3248

Ned's Cell (307) 751-8289  
 Jan's Cell (307) 751-9470  
 njwardherefords@gmail.com  
 www.NJWHerefords.com

Cody & Shawna Chabot (541) 410-5201

**Doug & Wade Perks**

**Tom & Tammy Boatman**

12526 N. Weldon Rd.  
 Rockford, IL 61102

(404) 372-6754 (770) 354-4195  
 tomtammy@perksranch.com  
 www.perksranch.com

**Production Sale - October 12, 2013**

**NJW POLLED HEREFORDS**

**NJW Bull Sale – April 10, 2013**



# CB 57U CAN DOO 102Y

Registration No.: C02953537 Born: January 2, 2011 BW: 79 lbs. WW: 867 lbs. YW: 1283 lbs. Semen Certificates Required: No

**Price: 50-straw semen packages: \$2,500.**



Can Doo is eye-appealing and short-marked and is all bull. He is stout, long-sided and sure-footed, with lots of volume and hair.

Can Doo's first calves are, as predicted, light at birth. Can Doo's actual birthweight was 79 lbs.

He is out of a model, problem-free cow with just the right amount of milk. She is western-bred, nine years old in 2013 and is very youthful. She was named Grand Champion Hereford Female at Toronto's 2011 Royal Winter Fair, with Can Doo at foot.

With a great temperament to-boot, we expect he'll do the Hereford industry proud.

**Can Doo was the 2012 World Hereford Conference National Reserve Grand Champion Bull.**

As a calf, Can Doo was named Reserve Grand Champion at Toronto's 2011 Eastern National Royal Agricultural Winter Fair; he was named the Canadian National Senior Bull Calf Champion at Regina's Canadian Western Agribition and he has topped a few large Canadian Mark of Excellence shows.

Semen packages are available this year from this great young herdsire. Semen available for Canadian and U.S. markets. Inquiries from foreign countries is welcomed.



HF 74M LIMELIGHT LADY 42P  
DAM OF CAN DOO 102Y



CB 38N LADY DIXIE 112W  
MATERNAL SISTER OF CAN DOO

**Owned with: Cayley Brown and Rock Bottom Farm**

STAR BRIGHT FUTURE 533P ET  
RVP STAR 533P CAN-AM ET 57U  
STAR BONNIE BETH 54N

REMITALL ONLINE 122L  
RB L1 DOMINETTE 8116  
CS BOOMER 29F  
HCC BONITA 8L

STAR MKS LIMELIGHT 288G  
HF 74M LIMELIGHT LADY 42P  
HF 43K DUSTY LADY 74M

STAR L1 TEXACO 1ET  
DLR MISS DIXIE 143B  
RU DUSTER 60D 1  
HF 92C MISS FORTUNE 43K

EPDS	CE	BW	WW	YW	MM	TM	MCE	SC	CW	Stay	MPI	FMI	FAT	REA	MARB
	-2.7	4.3	47.0	72.3	19.9	43.4	3.3	0.4	88.9	-1.5	144.0	121.1	-0.005	0.23	-0.04
ACC	.11	.34	.25	.24	.10	-	.09	.13	.16	.32	.22	.15	.11	.13	.08

## NJW 78P 4037 DURANGO 212X

Registration No.: C02965684 Born: April 4, 2010  
Semen Certificates Required: No

**Price: \$50.00/Straw**

US Semen sold through Ned & Jan Ward.



Durango's dam has come from a long line of great cows. His sire also has a powerful genetic background but has unfortunately not been able to export semen.

**Owned with:**  
Ned & Jan Ward  
(307) 672-3248  
njwherefords@gmail.com

EPDS	CE	BW	WW	YW	MM	TM	MCE	SC	CW	Stay	MPI	FMI	FAT	REA	MARB
	3.4	3.0	57.4	96.2	21.4	50.1	2.8	0.2	97.7	-	-	190.7	-0.042	0.61	0.01
ACC	.17	.37	.30	.32	.20	-	.16	.28	.26	-	-	.26	.25	.25	.23

CS BOOMER 29F  
THM DURANGO 4037  
THM 7085 VICTRA 9036

RU 20X BOULDER 57G  
NJW BW LADYSPORT DEW 78P ET  
SADDLE VLY LADYSPORT 120

REMITALL BOOMER 46B  
CS MISS 1ST FLAG 21A  
THM VICTOR DOM 7085  
THM VICTRA 5404 7073  
REMITALL KEYNOTE 20X  
RU 10A DEW 57D  
RU DUSTER 60D  
GK LADYSPORT 131A

## GOLDEN-OAK 4J MAXIUM 28M

Registration No.: C02816155 Born: March 2, 2002  
BW: 104 lbs.<sup>adj</sup> WW: 792 lbs.<sup>adj</sup> YW: 1128 lbs.<sup>adj</sup>

Semen Certificates Required: No

**Price: \$50.00/straw**



Maximum's daughters have beautiful udders and are very maternal. His ability to improve udders and feet have been a real bonus in the Copper Creek herd.

**Owned with:**  
Golden Oak Livestock,  
Ned & Jan Ward,  
Frederickson Hereford Farm

EPDS	CE	BW	WW	YW	MM	TM	MCE	SC	CW	Stay	MPI	FMI	FAT	REA	MARB
	-2.0	4.5	43.9	73.2	14.7	36.7	3.8	0.5	67.2	0.8	143.484	2.035	0.48	-0.04	
ACC	.41	.85	.78	.77	.55	-	.33	.41	.52	.86	.71	.59	.53	.54	.51

SQUARE-D EXPLOSION 909E  
EAGLE-RIDGE BLASTER ET 4J  
KILMORLIE 75A BIRDY 746D

RU 20X BOULDER 57G  
TA-BAR CHANTELLE 15K  
TA-BAR CHANTELLE ET 15F

GK GENETIC CAPTAIN  
SQUARE-D SUSIE 709Z  
WTK 55Y BOND 75A  
KILMORLIE 163Y BIRDY 164A  
REMITALL KEYNOTE 20X  
RU 10A DEW 57D  
BIG T 75A MERIDIAN D61  
EMERALD CHANTILLY 116M 611X

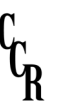


Copper Creek Ranch  
coppercreek@xplornet.ca  
P.O. Box 817

Princeton, British Columbia V0X 1W0

**Owners - The Stevenson Family**  
Ranch Phone: (250) 295-4099  
Ranch Fax: (250) 295-4079

**Managers - Phil & Catherine Brown**  
Phil's Cell: (250) 293-6857  
Catherine's Cell: (250) 293-6858  
Bob Proulx ~ Kevin Clement ~ Dick Holland



# CGC 99R YELLOWSTONE 17Y

Registration No.: C02959312 Born: March 29, 2011 BW: 105 lbs WW: 771 lbs.<sup>adj</sup> YW: 1,261 lbs.<sup>adj</sup> Semen Certificates Required: No

Price: \$50.00/Straw, minimum 5 Straws

Semen Qualifies for: Canada, U.S.A, Australia and Uruguay



A rare combination of power and style, Yellowstone is Robin's best son to date (and he's sired some good ones!) 17Y was the Reserve Calf Champion at Farmfair in 2011. He combines a great phenotype – hair, pigment, profile, shape, bone and a big sound foot – with great numbers – top 1% of the breed for WW, YW and REA. Yellowstone is full of muscle and scanned a 16.4 inch ribeye on U/S at 13 months of age.

BP ROBIN HOOD 86M  
**SFL 86M ROBIN 99R**  
 SFL MISS 10S STANDARD LADY 34E

HR ROBIN HOOD ET 300H  
 BP COM LADY 28J  
 SJSL HI 20 STAND LAD 10S  
 SFL MISS GENERATOR 64C

MHF F100 KONRAD 44M  
**CGC 44M IDAHO ICON 16P**  
 MISS IDAHO VOLTAGE 13G

CH 36E ICON ET 36K  
 MHF B54 FUTURE 71H  
 PH IDAHO C RED 329C  
 STANMORE VOLTAGE LASS 10B

EPDS	CE	BW	WW	YW	MM	TM	MCE	SC	CW	Stay	MPI	FMI	FAT	REA	MARB
	-3.8	7.6	70.3	107.9	12.7	47.9	-0.9	0.7	87.5	-2.5	164.9	112.0	0.021	0.81	-0.26
ACC	.05	.36	.29	.31	.13	-	.04	.04	.19	.32	.25	.20	.18	.18	.15

## SFL 86M ROBIN 99R

Registration No.: C02865429 Born: March 27, 2005 BW: 90 lbs WW: 715 lbs.<sup>adj</sup> YW: 1,168 lbs.<sup>adj</sup> Semen Certificates Required: No

Price: \$50.00/Straw, minimum 5 Straws



Robin is the #3 Horned bull in the breed for WW epd, an even more impressive feat when you consider none of his progeny have ever seen a lick of creep feed. He has sired a Calgary Bull Sale Junior Champion, Farmfair Reserve Calf Champion, and numerous Hardisty class winners. Robin consistently sires cattle that are well marked with extra thickness, muscle and performance yet moderate framed.

HR ROBIN HOOD ET 300H  
**BP ROBIN HOOD 86M**  
 BP COM LADY 28J

CFR ROBINSON 359  
 HR MISS GENERAL 114A  
 FE 17D SUPREME SILVER 91F  
 BP MISS SANDMAN 107C

SJSL HI 20 STAND LAD 10S  
**SFL MISS 10S STD LADY 34E**  
 SFL MISS GENERATOR 64C

HI STANDARD LAD 20P  
 STANDARD L1 LASS 10G  
 SNS GENERATOR 28X  
 SFL 25P BRITISHER LADY 95U

EPDS	CE	BW	WW	YW	MM	TM	MCE	SC	CW	Stay	MPI	FMI	FAT	REA	MARB
	-3.2	7.4	69.9	80.7	10.7	45.7	0.3	0.9	78.0	-2.1	164.7	67.7	0.037	0.39	-0.24
ACC	.19	.72	.61	.61	.32	-	.17	.11	.38	.82	.58	.41	.35	.37	.31

## CGC 44M IDAHO ICON 16P

Embryos available by 99R. 16P has raised 3 replacement females and 4 herd bulls, 3 of whom are full siblings to this mating, including Yellowstone 17Y (pictured above).

EPDS	CE	BW	WW	YW	MM	TM	MCE	SC	CW	Stay	MPI	FMI	FAT	REA	MARB
	-3.8	6.0	46.4	82.2	14.7	37.9	-1.8	0.2	80.7	-1.9	137.2	122.6	-0.006	0.50	-0.23
ACC	.03	.33	.31	.30	.25	-	.02	.04	.19	.46	.33	.16	.11	.14	.08



**CHURCH RANCH**

Neal & Joelle  
 (403) 567-0998  
 Email: joe\_neal@telus.net

Ranch location:  
 1 km west of Hwy 2 at Balzac  
 Mailing address:  
 16450 15 St NE Calgary, AB T4B 2T3

Gordon & Rosemary  
 (403) 226-0606  
 Cell (403) 852-9274



## TH 75J 243R BAILOUT 144U ET

Registration No.: C02954344 Born: March 19, 2008  
Semen Certificates Required: No

**Price: \$70.00/Dose for 5 Doses \$60.00/Dose for 10 Doses or \$50.00/Dose for 20 or more Doses**

**Dominating the Show and Sale Ring!**

EPDS	CE	BW	WW	YW	MM	TM	MCE	SC	CW	Stay	MPI	FMI	FAT	REA	MARB
	0.8	4.3	59.1	95.9	18.1	47.7	1.2	0.7	115.3	-	-	142.8	-0.001	0.50	-0.05
ACC	.32	.81	.71	.64	.30	-	.22	.28	.41	-	-	.47	.40	.41	.37

RU 20X BOULDER 57G  
TH SHR 605 57G BISMARCK 243R  
YY 125Y PRIMROSE 605F

REMITALL KEYNOTE 20X  
RU 10A DEW 57D  
DAVIS 81W TOP CAT ET 125Y  
CFCW MISS ENERGIZER LECTRIC 5B

SQUARE-D FULLBACK 615C  
KB 615C NICKY 75J  
KILMORLIE 359S NICKY 713D

RLOA ULTIMO ET 74U  
AED DONNETTE 15  
KILMORLIE 12P STEEL ET 359S  
MB MISS NICK 115Y



2012 RAWF Futurity Champion for Trent-Hill Farm



2012 Reno Champion \$90,000 Hi Seller for Brumley's



2012 CWA Sr Heifer Calf Champion for Cory Lees



2013 Denver Sr Bull Calf Champion \$110,000 Hi Seller for Perk Ranches



## SQUARE-D TORTUGA 953T

Registration No.: C02897246 Born: March 11, 2007  
Semen Certificates Required: No

**Price: \$50.00/Dose for 5 Doses or \$40.00/Dose for 10 Doses**

**Fresh Genetics with Pigment & Presence**

EPDS	CE	BW	WW	YW	MM	TM	MCE	SC	CW	Stay	MPI	FMI	FAT	REA	MARB
	2.7	4.0	52.2	80.4	19.4	45.5	3.1	0.9	85.7	0.3	156.0	139.4	-0.009	0.40	-0.04
ACC	.13	.50	.36	.35	.21	-	.11	.09	.25	.63	.40	.19	.09	.14	.07

REMITALL ONLINE 122L  
WILGOR 55K NORTHEASTERN OL 2N  
WILGOR 174H KEYLINE 29F 55K

SQUARE-D SAFARI LAD 529J  
SQUARE-D AMEENA 753M  
SQUARE-D JAYNE 533J

REMITALL EMBRACER 8E  
REMITALL CATALINA 24H  
CS BOOMER 29F  
STAR STYLISH LADY 174H  
TPH 636B SAFARI 18D  
SQUARE-D KEEPSAKE 992D  
KFF KLONDIKE TARZAN  
SQUARE-D KEEPSAKE 337A



\$8,000 Sale Feature sold to Birds Hill Farm in NB



2010 RAWF Res Grand Champion Bull for Palsson Herefords & Laura Naismith



\$7,000 Sale Feature and sold to Culp's in Kentucky



2012 RAWF Jr Heifer Calf Champion for Elmlodge

**For Semen Contact:**

**PALSSON**  
**HEREFORDS**

**Brent & Jen Palsson**  
Cell: (613) 880 - 7053  
brentpalsson@telus.blackberry.net

**ELMLODGE**  
Polled Herefords

**Billy & Juanita Elmhirst**  
Res: (705) 295-2708 Cell: (705) 761-0896  
ircc@nexicom.net  
www.elmlodge.ca





## ELM-LODGE X-MAN 18X

Registration No.: C02946861 Born: February 1, 2010  
 BW: 100 lbs WW: 688 lbs.<sup>adj</sup> YW: 1,241 lbs.<sup>adj</sup>  
 Semen Certificates Required: No

**Price: Call For Pricing**

X-Man was the top selling bull in the 2011 Source for Success Bull Sale. His first set of calves exceeded expectations easy calving, quick growing stylish critters. X-Man covered cows and fleshed up on grass in 2012 so well when we brought him in late last summer it was clear he should have a go in the show ring. Very free moving, pigmented and that hair coat we all desire. He went on to be Senior Champion at the Royal his only trip to town. Inquiries welcome. Owned with Elm-Lodge

EPDS	CE	BW	WW	YW	MM	TM	MCE	SC	CW	Stay	MPI	FMI	FAT	REA	MARB
	1.8	3.6	48.3	75.0	22.6	46.8	3.8	0.9	76.1	-0.6	153.4	152.8	-0.024	0.20	0.04
ACC	.14	.38	.31	.32	.20	-	.12	.15	.24	.32	.28	.21	.15	.17	.14

KCF BENNETT 3008 M326  
 SHF RIB EYE M326 R117  
 HVH MISS HUDSON 83K 8M

RRH MR FELT 3008  
 KCF MISS 459 F284  
 MSU MF HUDSON 19H  
 SUN VINDY MISS 83K

ELM-LODGE LUCKY CHARM 13L  
 ELM-LODGE 25H PASSION 19P  
 ELM-LODGE HAVEN 25H

KJ SPH REVOLUTION 872G  
 APPLEWOOD HONEY P183 102G  
 ELM-LODGE FRANCHISE 9F  
 ELM-LODGE 40X MISCHIEF 31D



## NJW 72N P606 PAYDAY 52Y ET

Registration No.: C02974883 Born: February 10, 2011  
 Semen Certificates Required: No

**Price: Call For Pricing**

Our pick of Ned and Jan's Bull offering last spring. Payday is a full brother to NJW P606 72N Daydream 73S dam of back to back Denver champions Trust 100W and Hometown 10Y. That combined with the cow making ability of P606 and we feel this is our finest breeding tool to date. Style, calving ease and tons of maternal in this number crunching sire. Progeny and services available exclusively from Palsson Herefords

EPDS	CE	BW	WW	YW	MM	TM	MCE	SC	CW	Stay	MPI	FMI	FAT	REA	MARB
	-1.8	3.3	43.1	70.2	29.5	51.1	0.5	1.1	86.4	-	-	-	0.017	0.71	0.14
ACC	PE	.25	.26	.26	.23	-	PE	.19	.24	-	-	-	.28	.27	.26

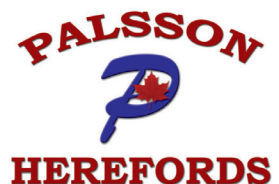
REMITALL BOOMER 46B  
 PW VICTOR BOOMER P606  
 PW VICTORIA 964 8114

REMITALL KEYNOTE 20X  
 REMITALL SALLY'S LASS ET 120X  
 RHF VICTOR 266 964  
 HVF VICTORIA 1121 05  
 REMITALL KEYNOTE 20X  
 RU 10A DEW 57D  
 CIRCLE-D WRANGLER 832W  
 JR Y53 WILMA D32

RU 20X BOULDER 57G  
 NJW 94J DEW 72N  
 NJW D32 CLAIRE 94J



**Brent & Jen Palsson**  
 Cell: (613) 880 – 7053  
 brentpalsson@telus.blackberry.net



# K-COW YAMAHA 262Y

Registration No.: C02953303    Born: January 28, 2011    BW: 98 lbs    WW: 776 lbs<sup>adj</sup>    Semen Certificates Required: No

**Price: \$50.00/Straw minimum 5 Straws**  
**Semen Qualifies World Wide**



Yamaha has a real powerful hip and is deep sided just like his sire with a tidy front end. He's got that extra length of body and wide top. Proven genetics in and out of the show ring.



**EPDS**  
 CE -6.3  
 BW 8.3  
 WW 81.8  
 YW 133.8  
 MM 23.0  
 TM 63.9  
 MCE -0.9  
 SC 1.1  
 CW 130.2  
 Stay -3.4  
 MPI 183.0  
 FMI 160.0  
 Fat 0.007  
 REA 0.68  
 Marb 0.01

EPDS	CE	BW	WW	YW	MM	TM	MCE	SC	CW	Stay	MPI	FMI	FAT	REA	MARB
	-1.6	6.1	61.8	98.3	17.6	48.5	0.5	0.7	99.7	-1.4	159.9	146.6	-0.006	0.36	-0.04
ACC	.05	.36	.27	.27	.09	-	.05	.05	.18	.32	.23	.13	.04	.08	.4

DXB 35M TORQUE 26T  
**K-COW WIDELOAD 87W**  
 DUNROBIN SALSA 87S

DXB 73J PROWLER 35M  
 BAR-E-L 74F CHANTELE 16K  
 K-COW NACHO MAN ET 36N  
 DUNROBIN REDLADY 77P

KJ SPH REVOLUTION 872G  
**LAKEFORD HAIL 262M**  
 NCX HAIL 262H

IHRY RENEW 520E  
 SPH VCR MISS VICKIE 520E  
 NCX FUTURE MD 32F  
 NCX FLIRT 164F



**K-COW NACHO MAN ET 36N**  
**The Common Denominator**  
 Sire of Jake, Grandsire of  
 WideLoad,  
 Great Grandsire of Yamaha,

Price: \$35.00/Straw  
 - minimum 10 Straws



**K-COW JAKE 291U - Son of Nacho**

EPDS	CE	BW	WW	YW	MM	TM	MCE	SC	CW	Stay	MPI	FMI	FAT	REA	MARB
	-2.2	6.1	63.8	107.8	25.3	57.2	-1.6	0.9	100.5	-1.7	170.7	154.3	-0.006	0.55	-0.06

EPDS	CE	BW	WW	YW	MM	TM	MCE	SC	CW	Stay	MPI	FMI	FAT	REA	MARB
	-0.8	4.7	45.2	88.0	23.2	45.8	-1.5	0.7	91.0	-1.1	145.9	145.9	-0.004	0.25	0.04



Kevin & Janice Wirsta  
 P: (780)724-2789  
 C: (780)614-5959  
 Box 1450  
 Elk Point AB, T0A 1A0  
 kcow@telus.net  
 www.kcow.ca

Yamaha Owners  
 K-Cow Ranch, AB  
 Rednex Ranch, AB



Jim & Shelley Kudera  
 P: (780)325-2256  
 C: (780)497-1441  
 Box 729  
 Wildwood, AB T0E 2M0  
 jsk@rednexranch.com  
 www.rednexranch.com

# TH 512X 719T PLAYMAKER 14Z

American Registration No.: P43294102 Born: January, 16, 2012 Semen Certificates Required: No



**Semen Packages:**  
**80 Units per Package**  
**50 available year 1**  
**30 available year 2**  
**Non Certificate Bull**

**\$4,800 per Package**

**Only 33 Semen Packages sell Worldwide in 2013**

USA EPDS	CE Dir.	BW	WW	YW	M	Milk & Growth	CE Mat.	MCE	SC	Fat	REA	MARB
	8.1	-0.3	71	99	23	59	-0.1	114	1.2	-0.006	0.66	-0.12
<b>ACC</b>	.18	.41	.33	.31	.18	-	.15	.23	.19	.22	.23	.19



TH 122 71I Dominette 512X ET

DRF JWR PRINCE VICTOR 71I  
**TH 122 71I VICTOR 719T**  
 KBCR 19D DOMINETTE 122

HRP THM VICTOR 109W 9329  
 RHF 964 VICTRA 4057  
 NJW 1Y WRANGLER 19D  
 KBCR DOMINETTE 9112

DRF JWR PRINCE VICTOR 71I  
**TH 122 71I DOMINETTE 512X ET**  
 KBCR 19D DOMINETTE 122

HRP THM VICTOR 109W 9329  
 RHF 964 VICTRA 4057  
 NJW 1Y WRANGLER 19D  
 KBCR DOMINETTE 9112

- New, innovative and bold. 14Z is an intriguing genetic package.
- A full sister/brother mating, ensuring low birth, short gestation, early puberty, excellent growth and REA.
- 14Z excels in mass, rib dimension and phenotype which is not found in most low birth weight bulls.
- A supreme heifer bull candidate with an EPD profile of excellence.
- His dam ratioed 90 BW; 114 WW; and 105 YW
- If consistency, uniformity and predictability are important, so is 14Z.

*Topp Herefords*

Ryan and Prairie Topp  
 1157 83rd Ave. N.E.,  
 Grace City, ND 58445

P: (701)-674-3152  
 info@toppherefords.com  
 www.toppherefords.com

**BNC Polled Herefords**  
**Bobby Hull, Owner**

Lorne Hadden, Ontario Manager  
 Michael Goodine, New Brunswick Manager  
**Contact Michael, 506-449-8050, for semen packages**  
 3268 RTE 105 Bear Island, NB E6L 1H8 Canada



## PDHR 20J STANMORE 47R

Registration No.: C02867004 Born: February 18, 2005

BW: 98 lbs WW: 691 lbs.<sup>adj</sup> YW: 1030 lbs.<sup>adj</sup>

Semen Certificates Required: No

**Price: \$40.00/straw**

Semen available for:

Canada, USA, Australia, Brazil, Uruguay, Paraguay, Panama, Columbia, South Africa, New Zealand, China and Mexico.

47R sets himself apart by posting appealing calving ease and birth weight predictions, while still transmitting mass, center body dimension and shape to his progeny. He has consistently sired moderate framed, low maintenance cattle with excellent muscle definition and ample performance in our herd, when mated to both heifers and mature cows. Genetically 47R ranks in the top 3% for FAT; 4% for FMI; 15% for Milk; 20% for MCE, SC; and 25% for BW.

EPDS	CE	BW	WW	YW	MM	TM	MCE	SC	CW	Stay	MPI	FMI	FAT	REA	MARB
	1.8	2.0	40.0	64.6	26.9	46.9	3.5	1.0	87.2	0.4	147.9	168.8	-0.046	0.43	0.11
ACC	.32	.77	.68	.67	.39	-	.24	.18	.47	.83	.63	.48	.41	.42	.38

AGA 4016D STANMORE 121G  
**AGA 121G STANMORE 20J**  
 AGA 40E MISS STANMORE 80G

CTY K STANMORE 4016D  
 AGA 99B CENTENNIAL 51D  
 AGA 9012 STANMORE 40E  
 AGA 16B MISS GENERATOR 20E

C 18C GENERAL D LAD 80G  
**PDHR 80G GENERAL LASS 91K**  
 PDHR MISS 40B DIAMOND 92E

GENERATING STAR 18C  
 AC MISS 10U STD COMMANDER 30Y  
 JNHR DIAMOND 40B  
 PDHR MISS 18Y DOMINO LASS 53B

**Progressive Commercial  
 Herd AI inquires are always  
 welcome**



## BIG-GULLY 611 BOUNTY 517U

Registration No.: C02915925 Born: March 5, 2008

WW: 788 lbs.<sup>adj</sup> YW: 1152 lbs.<sup>adj</sup>

Semen Certificates Required: No

**Price: \$40.00/straw**

Semen available for:

Canada, USA & Australia

Phenotypically, 517U possesses the ideal combination of power, bone, body dimension and performance in a uniquely sound and high-quality package. 517U has two full sisters and a maternal half-sib in the herd, with each possessing ideal udder suspension, levelness and teat size. As the 2010 RBC Supreme Champion, 517U sired the 2012 WHC Champion Horned Heifer Calf and is a paternal half-sib to the 2012 WHC Grand Champion Horned Female. Genetically, 517U ranks in the top 3% for FAT, REA; 4% for FMI; 15% for WW, TM, MPI; and 20% for YW, MILK.

EPDS	CE	BW	WW	YW	MM	TM	MCE	SC	CW	Stay	MPI	FMI	FAT	REA	MARB
	-3.4	7.3	57.1	91.9	25.6	54.2	-1.8	0.7	109.0	-1.5	160.9	169.0	-0.044	0.82	-0.16
ACC	.17	.62	.52	.49	.15	-	.12	.11	.32	.71	.47	.34	.29	.30	.26

KJ BJ BOUNTY HUNTER 741P  
**KSU BOUNTY HUNTER 611**  
 KSU MISS 6052F 311

C-S PURE GOLD 98170  
 C 590 MS DOM 95034  
 MMH DUSTER LAD 5G  
 BIG-GULLY 504 EAGLE LADY 17H

C PURE GOLD 1117  
**BIG-GULLY GOLD DUST LASSY 217R**  
 BIG-GULLY 5G DUSTER LASSY 217L

**High-Quality Bulls &  
 Females always available for  
 private purchase**

**You are more than welcome to visit the farm anytime and we will proudly tour you through our herd.**

**Buddy, Frances, Lance & Tyler Leachman**

Box 535 Maidstone, SK S0M 1M0 12 miles North of Maidstone on Hwy 21

Phone/Fax: 306-893-2879 • Lance Cell: 306-903-7299





## C CRUZ 0248 ET

Registration No.: C02962580 Born: April 9, 2010  
Semen Certificates Required: No

**Price: \$40.00/straw**

Semen available for:  
Canada

We believe CRUZ is unique with regard to shear power, muscle definition and stoutness of structure. Yet with his dimension and width, he doesn't sacrifice flexibility or stability on the move. We are very excited to incorporate this polled sire into our program and his first calf crop at Sirett Family Stock Farm indicates his progeny will be moderate at birth, grow quickly and have plenty of power. Genetically, CRUZ ranks in the top 2% for REA, 15% for YW, MPI, FMI; 20% for WW, TM; and 25% for MILK, FAT.

EPDS	CE	BW	WW	YW	MM	TM	MCE	SC	CW	Stay	MPI	FMI	FAT	REA	MARB
	-2.0	4.7	55.7	96.5	23.9	51.8	2.2	0.7	119.5	0.8	161.9	153.1	-0.016	0.87	-0.08
ACC	.13	.39	.26	.25	.16	-	.11	.13	.20	.16	.19	.18	.15	.16	.14

GH NEON 17N  
**UPS TCC NITRO 1ET**  
LCC TWO TIMIN 438 ET

GH DIFFERENCE BRITISHER 45L  
GH SIR SIMBA LASS 107K  
REMITALL ONLINE 122L  
RST ROF REBA 28H

CJH COWBOY 512  
**C COWGIRL 7030 ET**  
C NOTICE ME ET

CJH MISTER MOM 350  
CJH L1 DOMINETTE 717  
C-S PURE GOLD 98170  
HH MISS ADVANCE 104A

**Owned with:** Sirett Family Stock Farm  
Neilburg, SK  
Fred Sirett: 306-823-4440 (H)  
306-823-7376 (C)



## WCC/CC 1009

### GREAT DIVIDE 102

Registration No.: C02969008 Born: March 5, 2011  
Semen Certificates Required: No

**Price: \$40.00/straw**

Semen available for:  
Canada, USA, Australia, Brazil, Uruguay, Paraguay, Panama,  
Columbia, South Africa, New Zealand, China and Mexico.

GREAT DIVIDE was an attractive breeding option to us because of the top shape, rib curvature and weight per day of age he generated as a yearling. He is fully pigmented and has a striking look from the profile due to his straightness of lines and up-headed appearance. His actual birth weight of 76 lbs. makes him a versatile breeding tool on heifers or cows and his triplet of carcass indicators will also be beneficial. GREAT DIVIDE was Supreme Champion over 11 breeds at the 2012 Nebraska Cattlemen's Classic. Genetically, GREAT DIVIDE ranks in the top 5% for FMI; 10% for FAT; 15% for REA; 20% for MILK, TM; and 25% for WW.

EPDS	CE	BW	WW	YW	MM	TM	MCE	SC	CW	Stay	MPI	FMI	FAT	REA	MARB
	0.5	3.9	54.5	82.5	25.1	52.4	1.1	0.6	102.5	-	-	166.9	-0.032	0.58	0.12
ACC	.14	.30	.22	.22	.14	-	.12	.13	.17	-	-	.16	.12	.13	.12

THM DURANGO 4037  
**CRR ABOUT TIME 743**  
CRR D03 CASSIE 206

CS BOOMER 29F  
THM 7085 VICTRA 9036  
SHF INTERSTATE 20X D03  
CRR 475E CASSIE 838

CH ENUFF PROPHET 2913  
**WRB ELIZABETH 1009**  
WRB MADALYNNE 10M 3804

M&M TUFF ENUFF 618  
CH LADY PROPHET 0220  
PURPLE TONIC 10M  
WRB AIM HIGH 1100

**Owned with:** White Cattle Company  
Buffalo, Wyoming  
Joel White: 307-217-0367 (C)  
307-684-7881 (H)

**Thanks to those who supported our 3rd Big Gully Farm Internet Sale this past fall.**

**Buddy, Frances, Lance & Tyler Leachman**

Box 535 Maidstone, SK S0M 1M0 12 miles North of Maidstone on Hwy 21  
Phone/Fax: 306-893-2879 • Lance Cell: 306-903-7299





## SLDK VENDETTA V-9

Registration No.: C02968520 Born: February 2, 2008  
Semen Certificates Required: No

**Price: \$50.00/straw**

Semen available for:  
Canada & USA

VENDETTA was the Horned Senior Champion at the 2011 National Western and caught our attention there with regard to mass, structural integrity and balance. We are excited to use the excellent multi-trait genetic profile that VENDETTA offers, but more crucial is the power, center body dimension and look that we feel he can transmit to a group of progeny. Genetically, VENDETTA ranks in the top 10% for WW, TM; 15% for YW; 20% for MILK, SC; and 25% for REA, MARB.

EPDS	CE	BW	WW	YW	MM	TM	MCE	SC	CW	Stay	MPI	FMI	FAT	REA	MARB
	-0.3	4.5	60.0	93.8	24.9	54.9	2.6	1.0	103.5	-	-	129.3	0.017	0.47	0.14
ACC	.11	.42	.28	.26	.14	-	.09	.09	.19	-	-	.16	.11	.13	.10

C-S PURE GOLD 98170  
**ANKONIAN MIDAS 72**  
LEMAR GIRL WATCH 3J

REMITALL ONLINE 122L  
**MH MISS ONLINE 486**  
JV JENNY 624

C GOLD RUSH 1ET  
C MS DOM 93218 1ET  
GERBER WATCHFIRE 117F  
LEMAR MIS MOH QUEST 1F

REMITALL EMBRACER 8E  
REMITALL CATALINA 24H  
HH ADVANCE 9012Y  
JV JENNY 438

**Owned by:**

Sladek Farms  
Iowa City, IA  
319-351-3376

Sunset Ridge  
Herefords  
Cumming, GA  
770-886-6849

Roy Barnes  
Marietta, GA  
770-948-5512



## C FANTASTIC 2165

Registration No.: C02892810 Born: March 13, 2002  
Semen Certificates Required: No

**Price: \$40.00/straw**

Semen available for:  
Canada & USA

FANTASTIC was the Grand Champion Horned bull at Denver in 2004. We have continued to use him based on the productivity of his daughters. They are level-lined, quality uddered, heavily pigmented and possess tremendous carcass genetics.

Genetically, FANTASTIC ranks in the top 3% for REA; 5% for SC; 15% for YW, MARB; 20% for WW; and 25% for FMI.

EPDS	CE	BW	WW	YW	MM	TM	MCE	SC	CW	Stay	MPI	FMI	FAT	REA	MARB
	-0.1	2.9	56.4	96.3	15.8	44.0	2.0	1.4	101.2	-	-	141.7	0.012	0.81	0.22
ACC	.34	.83	.77	.77	.68	-	.32	.48	.60	-	-	.60	.57	.58	.58

HH ADVANCE 6052F  
**HH ADVANCE 026K 1ET**  
HH MS ADVANCE 4054D

C-S PURE GOLD 98170  
**C FANTASTIA 0040**  
C MS MILE HIGH 98064

CL 1 DOMINO 392  
HH MISS ADVANCE 160A  
L1 DOMINO 910282  
HH MISS ADVANCE 218B

C GOLD RUSH 1ET  
C MS DOM 93218 1ET  
C L1 MILE HIGH 2ET  
HH MISS ADVANCE 104A

**Owned with:** Frisbie Herefords

Melba, ID  
Ed Frisbie: 208-495-2191

### Embryos for Sale

PDHR 20J STANMORE 47R X BIG-GULLY GOLD & SILVER 311T  
(10 Embryos)

BIG-GULLY 611 BOUNTY 517U X BIG-GULLY GOLD STANDARD 194R  
(4 Embryos)

C CRUZ 0248 ET X BIG-GULLY 8151 DOMINETTE 631Y  
(13 Embryos)

HF 4L BEYOND 36N X BIG-GULLY 47R STAN'S BELLE 53T  
(6 Embryos)

**For complete farm information including pictures,  
pedigrees and performance data-please visit  
[www.biggullyfarm.com](http://www.biggullyfarm.com)**

**Buddy, Frances, Lance & Tyler Leachman**

Box 535 Maidstone, SK S0M 1M0 12 miles North of Maidstone on Hwy 21  
Phone/Fax: 306-893-2879 • Lance Cell: 306-903-7299



# Allendale National W168

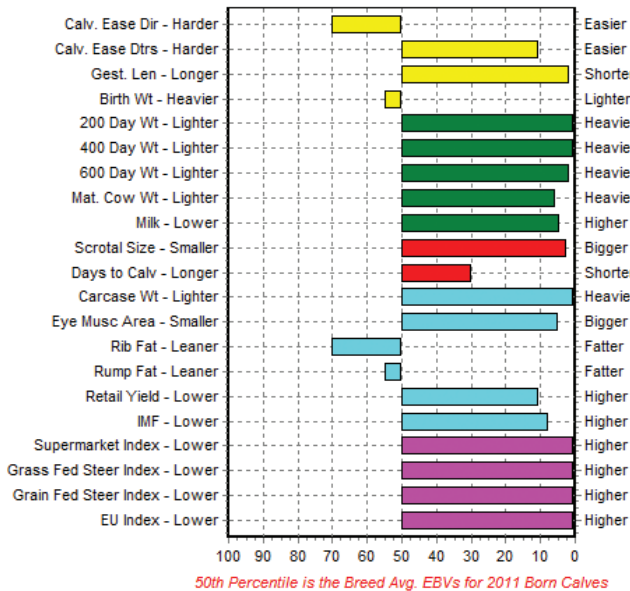
Animal ID.: AEDW168 (Aus) Born: June 20, 2001 Mature weight: 2464 lbs SC: 41 cm

Semen Certificates Required: No

**Price: \$60.00/straw Minimum 10**



Wayne Jenkins



BOBANKEN PACIFIC P143  
**ALLENDALE KING KONG 2**  
 ALLENDALE DAISY M7

BRONWYN T205-MOCCONA K40  
 BOBANKEN KERRY MAID J95  
 RARATONGA HOUSTON ET1  
 ST GABRIELS DAISY 63

ALLENDALE FEDERATION 3  
**ALLENDALE CORA R22**  
 ALLENDALE CORA N100

DAVIS 80U FACSIMILE 14X  
 ALLENDALE FANCY 248  
 ALLENDALE BENEFACTOR 3  
 ALLENDALE CORA K62

- Grand Champion Poll Hereford – 2003 and “Sire of the Year” 2006.
- Highest selling whiteface sire (\$A85000) in Australia for over 50 years.
- Trait leader for eight EBVs. Arguably one of the best elite sires ever bred in Australia.
- Breedplan advises EPD percentiles should closely follow EBV percentiles in Australia & New Zealand.
- Dark, soft skin & hair type, cherry red coat, 100% pigmented both eyes.
- Semen stored at Alta Genetics.
- Complete outcross for any program looking for something “really special”.



**Robert & Moira O'Reilly**  
 P: +61 2 6032 7671  
 98 Grails Road  
 Rutherglen Victoria 3685  
 Australia

**Redgate Poll Herefords Pty Ltd**  
 ror@redgatestud.com.au  
 www.regatestud.com.au

**Alta Genetics**  
 1-263090 Range Road 11  
 Rocky View County, AB. T4B 2T3  
 Toll free 1-800-465-8858



## F-R 8020 LAD 33H

Registration No.: C02740171 Born: March 10, 1998  
 BW: 78 lbs WW: 670 lbs.<sup>adj</sup> YW: 1050 lbs.<sup>adj</sup> SC: 42 cm  
 Semen Certificates Required: No

**Price: \$40.00/straw**

Owned By: Doerksen Herefords  
 Comments by Arno Doerksen

- Never needed his feet trimmed.
- Sire of hundreds of uniformly moderate framed, good footed daughters with lots of milk and excellent udders. Those who have seen his daughters and grand-daughters repeatedly comment on the exceptional soundness and uniformity of his progeny.
- We've never used a bull that has produced so many sound, functional sons & daughters.
- He is +3.7 for calving ease and -1.0 on birth weight.
- We purchased 33H because of the balance of low birth weight, strong maternal back ground and the positive balance of big ribeye and high marbling by ultrasound. He continues to pass on those traits to his progeny.
- Sons consistently show extra muscle, thickness and easy fleshing ability after heavy use at a young age. Ranchers comment on the ability of the 33H sons to maintain and recover body condition after the breeding season.
- Sons and Grandsons consistently perform well in the feedlot.

EPDS	CE	BW	WW	YW	MM	TM	MCE	SC	CW	Stay	MPI	FMI	FAT	REA	MARB
	3.2	-1.1	26.6	42.4	9.1	22.4	3.7	0.9	44.1	1.4	118.7	152.2	-0.049	0.21	0.05
ACC	.42	.83	.78	.79	.66	-	.35	.27	.59	.89	.76	.56	.43	.50	.40

SR MARK I J215  
 OXH MARK DOMINO 8020  
 OXH KATE 6047 1ET

C1 DOMINO 8015  
 SR MISS B MARK E549  
 CL 1 DOMINO 1046  
 OXH RITA 1028

DW BRITISHER STANDARD 49R  
 DMF MISS BRITISHER STANDARD 3T  
 DMF MISS 93J LASS 21P

DW BRITISHER STANDARD 14L  
 DW MISS DOMINO BRITISHER 26L  
 STANDARD LAD 93J  
 MISS STAN MO LE 29E

# www.altacustom.com



## REMITALL PILGRIM 93P

Registration No.: C02851674 Born: February 13, 2004  
 BW: 96 lbs WW: 801 lbs.<sup>adj</sup> YW: 1313 lbs.<sup>adj</sup>  
 Semen Certificates Required: No

**Price: \$40.00/straw**

- Remitall Pilgrim 93P has influenced the Hereford Breed with his power and thickness.
- Remitall Catalina 24H, and Justamere 71H Debbie 786L are cows in Pilgrims pedigree that justify his value.
- Triara & Justamere have both used bulls from Debbie 786L.
- Pilgrim's calves have moderate birth weights, are very well marked with pigment and excellent muscle pattern. He adds hair, and his females have beautiful square utters with small teat size.

EPDS	CE	BW	WW	YW	MM	TM	MCE	SC	CW	Stay	MPI	FMI	FAT	REA	MARB
	-0.8	6.7	60.3	105.9	19.4	49.6	6.6	1.0	120.1	-2.3	154.3	164.5	-0.009	0.40	0.05
ACC	.20	.62	.52	.52	.27	-	.18	.18	.38	.64	.48	.30	.17	.24	.16

REMITALL EMBRACER 8E  
 REMITALL ONLINE 122L  
 REMITALL CATALINA 24H

REMITALL ACME 10A  
 PLAIN LAKE BELLE 20X 117P 5B  
 MM RSM STOCKMASTER 512  
 REMITALL CATALINA 139C

REMITALL HALE 71H  
 JUSTAMERE 71H DEBBIE 786L  
 JUSTAMERE 855C DEBBIE 817G

FELTONS 517  
 REMITALL FAIR SARA 52F  
 JUSTAMERE 11Y ALSTAR 855C  
 JUSTAMERE H161 DEBBY 217S

### Alta Genetics

P: (403)226-0666  
 TF: 1-800-465-8858  
 F: (403)226-4299

1-263090 Range Road 11  
 Rockyview County, AB. T4B 2T3  
 beefinfo@altagenetics.com  
 www.altacustom.com

**Owners of 33H**  
 Doerksen Herefords  
**Owners of 93P**  
 MJT Herefords





**K 64H RIBSTONE LAD 157K**  
 STANDARD 16E RIBSTONE 64H  
 K 61Z SUPER LADY 41G

**STANDARD RIBSTONE 16E**  
 STANDARD LASS 23E  
 SNS SUPER PACE ET 61Z  
 K 58X MASTER LADY 89Z

## LCI 157K RIBSTONE 107R

Registration No.: C02862176 Born: January 16, 2005  
 BW: 94 lbs WW: 830 lbs.<sup>adj</sup> YW: 1417 lbs.<sup>adj</sup>  
 Semen Certificates Required: No

**Price: \$60/dose or \$50 on packages of 20 straws or more**

A bull with lighter birth weights, yet at the top of the breed for performance, milk, and carcass. A true curve bending herdsire! We have used 107R successfully on heifers. He adds pounds to every mating. His daughters are now raising our top end bull calves.

EPDS	CE	BW	WW	YW	MM	TM	MCE	SC	CW	Stay	MPI	FMI	FAT	REA	MARB
	4.0	3.9	60.0	99.5	41.9	72.0	4.6	2.2	91.5	0.7	192.6	186.0	-0.024	0.52	0.21
ACC	.39	.81	.76	.76	.56	-	.34	.52	.51	.85	.71	.58	.52	.53	.49

LCI KAHLUA 82H  
**LCI 82H KAHLUA ANDIE 174M**  
 LCI 81F ANDIE 214K

DUNOON PAGE ET1  
 LCI RED HAVEN ET 112A  
 96 ANDY 81F  
 LCI MADISON DEBI 183G



**LCI 157K RIBSTONE 107R**  
 K 64H RIBSTONE LAD 157K  
 LCI 82H KAHLUA ANDIE 174M

**STANDARD 16E RIBSTONE 64H**  
 K 61Z SUPER LADY 41G  
 LCI KAHLUA 82H  
 LCI 81F ANDIE 214K

## LCI 107R RIBSTONE 154U

Registration No.: C02911775 Born: January 22, 2008  
 BW: 102 lbs WW: 790 lbs.<sup>adj</sup> YW: 1324 lbs.<sup>adj</sup>  
 Semen Certificates Required: No

**Price: \$60/dose or \$50 on packages of 20 straws or more**

The herdsire most picked out by our visitors as their favorite. He has so much muscle, clean fronted and is wide backed. A bull that gets out and moves. Sires calves with pigment, performance and style. Top of the breed for performance, milk and ribeye area. Semen being used in Uruguay, Argentina, and New Zealand.

EPDS	CE	BW	WW	YW	MM	TM	MCE	SC	CW	Stay	MPI	FMI	FAT	REA	MARB
	0.4	6.6	58.1	103.0	33.6	62.7	2.1	1.4	97.9	0.5	178.7	159.7	-0.008	0.51	-0.01
ACC	.14	.59	.50	.49	.18	-	.11	.14	.32	.66	.45	.32	.26	.28	.23

LCI 6H WALDO 125P  
**LCI 125P NELLIE 105S**  
 LCI T097 TAM O' LASS 43M

LCI BD OSWALD 6H  
 LCI 82H MISS KAHLUA 146K  
 SMITHSTON TAM O'SHANTER ET2  
 LCI JUSTINE 58D



**GH RAMBO 279R**  
 GH NEON 17N  
 HR GOLD DOMINO 251E

**GH DIFFERENCE BRITISHER 45L**  
 GH SIR SIMBA LASS 107K  
 HR GOLD STANDARD ET 171B  
 HR 1T DOMINO LASS 252C

## CHURCHILL RAMBO 8116U ET

Registration No.: C02934840 Born: January 29, 2008  
 Semen Certificates Required: No

**Price: \$60/dose or \$50 on packages of 20 straws or more**

Calgary Reserve Champion and high selling in 2010. 8116 calves are consistently small at birth and easy calving with lots of vigor. His offspring are stylish and show the big hip 8116 posses. His females are clean made and real feminine.

EPDS	CE	BW	WW	YW	MM	TM	MCE	SC	CW	Stay	MPI	FMI	FAT	REA	MARB
	-0.1	2.4	45.4	63.1	12.8	35.5	3.1	0.3	71.6	-	-	114.9	-0.002	0.66	0.06
ACC	.25	.71	.63	.57	.24	-	.19	.22	.36	-	-	.42	.36	.37	.34

L1 DOMINO 95461  
**CL 1 DOMINETTE 825H**  
 CL 1 DOMINETTE 618F

L1 DOMINO 93469  
 L1 DOMINETTE 880467  
 GB L1 DOMINO 250  
 CL 1 DOMINETTE 301

### DOENZ RANCHES LTD.

PO BOX 362, WARNER, AB, T0K 2L0  
 Office Phone:(403)642-2380 Fax: (403)642-2471

Nelson Doenz  
 (403)642-7696

Brad Doenz  
 (403)642-7694

Josh Pickett - Herdsman  
 (403)642-7686

doenzranches@gmail.com  
 www.doenzranches.net



# TLELL 199S XPLOSIVE 18X {DLF IEF HYF}

Registration No.: C02941567    Tattoo: APSF 18X    Born: February 14, 2010    BW: 97 lbs.    Semen Certificates Required: No

**Price: \$50.00/Straw**



EPDS	CE	BW	WW	YW	MM	TM	MCE	SC	CW	Stay	MPI	FMI	FAT	REA	MARB
2.5	3.1	43.3	76.3	22.4	44.1	4.0	0.5	75.5	-1.3	144.4	146.0	-0.017	0.55	-0.04	
ACC	.09	.44	.30	.29	.15	-	.08	.13	.21	.32	.26	.17	.11	.14	.11

- RU 20X BOULDER 57G
- CCR 57G STAMINA ET 199S
- GOLDEN-OAK 46B KEEPSAKE 23K
- TLELL 29F RED CEDAR 8N
- TLELL 8N RAGAMUFFIN 22R
- TLELL 19K BANGEROO 29M
- REMITALL KEYNOTE 20X
- RU 10A DEW 57D
- REMITALL BOOMER 46B
- GOLDEN-OAK Y166 DONNA 5D
- CS BOOMER 29F
- TLELL 38L GLORIA 4G
- TLELL 517 BANGER 19K
- TLELL 60D ROO 29J

Astute cattlemen know that Performance, Pedigree and Phenotype are the cornerstones of any successful program and Tlell 199S Xplosive 18X covers them all. His performance includes a 205 day wt. of 796 Lb. and an average birth weight on his calves to date of 85 lb. With a Direct Calving Ease EPD of +2.5 and a Maternal Calving Ease of +4.0, you can be assured that his offspring will be born easy and grow fast!

His Dam was Western National Grand Champion Hereford Female in 2010 with 18X at her side and his Sire was National Reserve Grand Champion Hereford Bull in 2006. His pedigree includes the Calving Ease trait leaders Remitall Leonard and Tlell Red Cedar. Strong female lines include the Keepsake cow family from Golden-Oak and the Roo/Duster cow family from the Richardson Ranch to assure a strong maternal focus is bred into this bull.

His phenotype is awesome. You have to admire his length and smoothness while being blown away by his muscle and depth of body. But when you watch him move, you know why Xplosive 18X was chosen bull calf champion at the first combined horned polled show at Farmfair in 2010, under the scrutiny of Judge Dave Johner. This bull is an athlete and he travels around the ring or the pasture with an ease not often seen in a 2600 lb. bull. Early last fall, Judge Bill Biglieni picked him for his Grand Champion Hereford bull at the 2012 Manitoba Livestock Expo in Brandon, where he went on to be crowned Supreme Champion Bull over all breeds. At the 2012 Western Canadian Agribition Xplosive was a very popular choice for the Polled Hereford Grand Champion Banner and he was selected as a top ten finalists in the Royal Bank Supreme Championship Showdown.



Xplosive's Dam



Xplosive as Calf



**Richardson Ranch**  
**Don and Leslie Richardson**  
 P: (250)557-4348  
 Box 10 39614 HWY 16,  
 Tlell, BC V0T 1Y0  
 don@richardsonranch.ca  
 www.richardsonranch.ca

**Clay Enterprises**  
**Mark Knutson**  
 P: (306)532-4277  
 Box 1,  
 Wapella, SK S0G 4Z0  
 clayenterprises@hotmail.com  
 www.claycattle.ca



**SEMEN SERVICE PROVIDER:**  
**Semex Canada**  
**Dennis Serhienko**  
 Maymont, SK  
 Phone: 306-389-2101  
 dennis@westgen.com  
 www.semex.com

# TLELL 8N RED ZULU 1Z {DLF IEF HYF}

Registration No.: C02966501    Tattoo: APSF 1Z    Born: January 1, 2012    BW: 74 lbs.    WW: 862 lbs.<sup>adj</sup>    Semen Certificates Required: No

**Price: \$8.00 to \$80.00/Straw**



EPDS	CE	BW	WW	YW	MM	TM	MCE	SC	CW	Stay	MPI	FMI	FAT	REA	MARB
4.5	-0.4	32.1	57.4	22.2	38.3	4.3	0.6	54.9	1.5	-	118.0	0.000	0.32	0.00	
ACC	.08	.26	.21	.21	.10	-	.07	.09	.15	PE	-	.12	.06	.08	.06

Bull calves like Red Zulu come along rarely in a breeder's career. His pedigree is eight generations deep in Tlell breeding's and includes many of the breed icons such as Leonard, Boomer, Boulder, Blueprint and Felton 517 as well as Stamina and Olympian. His dam is double bred to Jade 550C which the Richardson's acquired from the Saddle-Valley Dispersal. This calf has the EPD documentation we are all striving to find for calving ease and maternal milk, yet still has actual growth and performance to grab your attention. His two year old Jade mother is an absolute gem, and did a great job on her first calf. This cow/calf pair sold for \$27,000 in the Richardson Ranch Online Sale.

Red Zulu 1Z was shown at the World Hereford Conference where he attracted attention from breeders around the world. He has that rare combination of a low birth weight (only 74 lbs) while achieving a very large weaning weight ( 205d adj of 862 lbs.). His actual weight when he left the farm for the Alta Genetics Stud was 996 pounds on October 6th with a 32 cm scrotal circumference. We expect Red Zulu to follow his sire, Tlell 29F Red Cedar 8N, to be a Birth Weight and Calving Ease trait leader who will moderate cow size. Use Red Zulu with confidence on your heifers this spring to increase value in your 2014 calf crop!!

CS BOOMER 29F  
**TLELL 29F RED CEDAR 8N**  
 TLELL 38L GLORIA 4G

TLELL 199S RED BULL 20U  
**TLELL 20U JADE 32X**  
 REMITALL JADE 257S

REMITALL BOOMER 46B  
 CS MISS 1ST FLAG 21A  
 REMITALL LEONARD 38L  
 TLELL J7 BLUE NUN 11E

CCR 57G STAMINA ET 199S  
 TLELL 46B RED JADE 16L  
 REMITALL OLYMPIAN ET 262L  
 MHPH MS 10H JADE 120M



**Richardson Ranch**  
**Don and Leslie Richardson**  
 P: (250)557-4348  
 Box 10 39614 HWY 16,  
 Tlell, BC V0T 1Y0  
 don@richardsonranch.ca  
 www.richardsonranch.ca



**C.L.L. HOLDINGS LTD**  
**Leonard & Leslie Conlon**  
 P: (306)825-2264  
 Box 2185,  
 Lloydminster, SK S9V 1R6  
 leonard@midwesttruck.ca



**Copper-T Ranch**  
**Trevor & Janice Tapp**  
 P: (250)699-6466  
 Box 185,  
 Fraser Lake, BC, V0J 1S0  
 ttapp@bcgroup.net



## NJW 51U 4037 DURAMAX 8X

Registration No.: C02949765 Born: January 27, 2010  
 BW: 91 lbs unassisted WW: 905 lbs.<sup>adj</sup> WW Ratio: 114  
 Semen Certificates Required: Yes

**Price: \$20.00/Straw \$100.00/certificate**

Duramax is extremely long sided and is full of red meat with an ideal set of numbers and a pedigree stacked with maternal performance. Owned with North Bluff Farms Inc. and NJW.

EPDS	CE	BW	WW	YW	MM	TM	MCE	SC	CW	Stay	MPI	FMI	FAT	REA	MARB
0.7	5.0	70.0	108.9	22.4	57.4	3.3	0.6	122.3	-	-	177.3	-0.018	+0.50	+0.12	
ACC	.16	.39	.28	.27	.19	-	.14	.17	.24	-	-	.21	.18	.19	.17

CS BOOMER 29F  
**THM DURANGO 4037**  
 THM 7085 VICTRA 9036  
 SHF RADAR M326 R125  
**NJW R125 67M FOREVER 51U**  
 NJW 57G 12E FOREVER 67M

REMITALL BOOMER 46B  
 CS MISS 1ST FLAG 21A  
 THM VICTOR DOM 7085  
 THM VICTRA 5404 7073  
 KCF BENNETT 3008 M326  
 SHF POSTIVE MISS 73C M15  
 RU 20X BOULDER 57G  
 NJW 25C 1A VACA 12E



Duramax's Dam



Full Blood Sister to 8X

**Kootenay**  
**Polled Herefords**  
 Murray Gore Ed Conroy  
 mgore1@telus.net P:(250)365-3270

**North Bluff Farms Inc.**  
 Vic Redekop  
 P:(604)856-7279



## WLB EMPIRE 980 91Z

Registration No.: C02967764 Born: February 12, 2012  
 BW: 94 lbs WW: 775 lbs.<sup>adj</sup> Nov. 20th: 1100 lbs.  
 Semen Certificates Required: No

**Price: \$400.00 for 10 Straws**

Empire won his class at Agribition where he was one of the most kicked up calves. He is dark, pigmented, long, deep and thick, thick, thick!!!

EPDS	CE	BW	WW	YW	MM	TM	MCE	SC	CW	Stay	MPI	FMI	FAT	REA	MARB
-1.5	4.2	57.5	90.6	20.1	48.9	-0.2	0.8	94.4	0.3	162.5	134.3	0.000	0.38	-0.03	
ACC	.08	.37	.28	.27	.07	-	.05	.13	.18	.33	.23	.16	.11	.13	.10

GO L18 EXCEL T31  
**CRR HELTON 980**  
 CRR 9B JULIANNE 405  
 WLB GLOBAL 72M 50S  
**WLB 50S GLORIA 106U**  
 WLB 7M FRAN 17S

GO EXCEL L18  
 GO MS 3196 ADVANCE R134  
 C&L DOUBLE TIME 452M 9B  
 CRR D03 JULIANNE 217  
 HAROLDSON WLB MUTUMBO ET 72M  
 WLB 035J FLORA 14N  
 WLB FRESH 035J 7M  
 WLB 5131E L1 DOMINETTE 14K



WLB Global 72M 50S



WLB Fresh 035J 7M

**Kootenay**  
**Polled Herefords**  
 Murray Gore Ed Conroy  
 mgore1@telus.net P:(250)365-3270

**North Bluff Farms Inc.**  
 Vic Redekop  
 P:(604)856-7279



## BR 9279 EXTRA DEEP 15Z

Registration No.: C02969818 Born: February, 11, 2012

BW: 96 lbs WW: 800 lbs.<sup>adj</sup>

Semen Certificates Required: No

**Price: 40 Straws/\$2500.00 & 20 Straws/\$1500.00**

GO EXCEL L18  
ECR L18 EXTRA DEEP 9279  
OXH CHRISTI 0028

DD EXCEL DESIGN 40  
GO MS 124 ADVANCE 7005  
CL 1 DOMINO 5131E  
OXH LOLA 8328

CC 56M SULLIVAN 42R  
DBHR 42R SILVER 102T  
DBHR 167L SILVER STAR 85P

LBH 20J STANMORE 56M  
CC 129D JEWEL 81K  
AGA 44C SILVER 167L  
DBHR STAR BRITISHER LASS ET 1G

EPDS	CE	BW	WW	YW	MM	TM	MCE	SC	CW	Stay	MPI	FMI	FAT	REA	MARB
	0.3	3.7	55.2	76.8	24.4	52.0	0.1	0.8	70.2	-0.9	164.9	117.6	0.003	0.33	-0.06
ACC	.08	.37	.29	.28	.11	-	.06	.10	.18	.32	.24	.17	.11	.14	.10

Thanks to Hill 70 Quantock for Purchasing half interest in BR 15Z.



**Bill & Sherry Creech**

Box 756 Lloydminster, AB/SK S9V 1C1

P:(780)875-8332 F:(780)875-8332

info@hill70quantockranch.com

www.hill70quantockranch.com

**These two "Bob" brothers created a lot of buzz around the stall during Agribition**

- ~Exiting New outcross genetics
- ~Short marked, pigmented and easy fleshing
- ~Moderate Birth Weights with great performance
- ~Sire ECR L18 Extra Deep 9279 aka "Bob". Bob was the 2010 Denver High seller. He is also the most consistent AI sire used here at Braun Ranch

~"Bob" sired the 2012 Agribition Junior Champion Get of Sire, Agribition Hereford sale second high selling heifer calf. Bob calves were also the Champion Pen of Bulls and Champion Pen of Heifers at the Medicine Hat all breeds pen show.

~Maternal pedigree that sires powerful bulls and stout females



## BR 9279 EXTRA DEEP ET 106Z

Registration No.: C02973124 Born: February 3, 2012

BW: 88 lbs WW: 809 lbs.<sup>adj</sup>

Semen Certificates Required: No

**Price: 40 Straws/\$2500.00 & 20 Straws/\$1500.00**

GO EXCEL L18  
ECR L18 EXTRA DEEP 9279  
OXH CHRISTI 0028

DD EXCEL DESIGN 40  
GO MS 124 ADVANCE 7005  
CL 1 DOMINO 5131E  
OXH LOLA 8328

DBHR 15R REALITY 17R  
DBHR 17R REALITY 78T  
DBHR 64H RIBSTONE LADY 22P

JMSH BRITISHER DOMINO 15R  
DBHR 86L STARLET 23N  
STANDARD 16E RIBSTONE 64H  
DBHR DOUBLE BRIT LASS 85E

EPDS	CE	BW	WW	YW	MM	TM	MCE	SC	CW	Stay	MPI	FMI	FAT	REA	MARB
	0.4	3.6	46.5	68.5	24.5	47.8	0.8	0.6	61.3	-	-	-	-0.004	0.31	-0.07
ACC	PE	.23	.20	.21	.11	-	PE	.09	.13	-	-	-	.10	.12	.09



**OXH CHRISTI 0028**

Dam of ECR L18 Extra Deep 9279



Medicine Hat All Breeds Beef Pen Show 2012  
Grand Champion Purebred Bulls

**Dick & Lorraine Braun**

P: 306-297-6404

Simmie, SK, S0N 2N0



**ECR L18 EXTRA DEEP 9279**

Sire of BR 15Z & BR 106Z

**Craig & Carrie Braun**

P: 306-297-2132

C: 306-297-7114

braunranchltd@gmail.com

**BRAUN RANCH**  
*Ltd.*



## BBSF 101N WRANGLER 29W

Registration No.: C02926002 Born: February 17, 2009

Semen Certificates Required: No

**Price: 20 Straws for \$1,000.00**

- High Seller in Brost Land & Cattle's Annual Production Sale 2009
- 2nd in class at the National Western Stock Show, Denver in 2011

Wrangler is a very athletic, free moving and attractive bull. Has bred many high sellers for both Brost's and Crittenden's.



EPDS	CE	BW	WW	YW	MM	TM	MCE	SC	CW	Stay	MPI	FMI	FAT	REA	MARB
	0.7	5.3	51.7	95.2	27.7	53.6	2.5	0.8	116.0	-2.4	152.3	131.0	0.018	0.32	0.03
ACC	.21	.72	.58	.56	.18	-	.16	.15	.34	.75	.51	.32	.18	.23	.15

BLAIR-ATHOL 65F ON LINE 13K  
**BLAIR-ATHOL 13K MAJOR 101N**  
 BLAIR-ATHOL 25C AMIGA 20K

RU 20X FUTURE 65F  
 MHR 2B MILDRED 76B 56D  
 NJW Z17 VAQUERO 25C  
 BLAIR-ATHOL LADY GRACE 14F

NJW 1Y WRANGLER 19D  
**BBSF 19D UNIQUE 1P**  
 BBSF 23C UNIQUE 9M

CIRCLE-D WRANGLER 832W  
 NJW FROSTY 1Y  
 JSF 37 271 DEVO 23C  
 BBSF 7C UNIQUE 1K

**Brost Land & Cattle Co.**  
 Box 96  
 Irvine, AB T0J 1V0  
 P:(403)834-2262

**Crittenden Bros.**  
 Box 158  
 Imperial, SK S0G 2J0  
 P:(306)963-2414

**Jay Holmes**  
 Box 158  
 Semans, SK S0A 3S0  
 P:(306)524-2762



## TH 104U 719T VICTOR 164X

Registration No.: C02956690 Born: March 3, 2010

Semen Certificates Required: No

**Price: 20 Straws for \$1,000.00**

- Champion 2 year old bull at the World Hereford Conference 2012

Victor is a clean made, big topped, muscular and eye appealing bull. Easy fleshing, super disposition with great testicles.

EPDS	CE	BW	WW	YW	MM	TM	MCE	SC	CW	Stay	MPI	FMI	FAT	REA	MARB
	3.6	5.1	59.5	96.7	23.1	52.9	0.9	1.1	110.6	-	-	163.9	-0.017	0.50	-0.04
ACC	.14	.40	.33	.34	.14	-	.11	.15	.24	-	-	.25	.23	.23	.21

DRF JWR PRINCE VICTOR 71  
**TH 122 71I VICTOR 719T**  
 KBCR 19D DOMINETTE 122

LCG MASTER CLASS 76S  
**TH 33F 76X EXQUISITE 104U**  
 III MS EXQUISITE 33F

HRP THM VICTOR 109W 9329  
 RHF 964 VICTRA 4057  
 NJW 1Y WRANGLER 19D  
 KBCR DOMINETTE 9112

DR WORLD CLASS 517 10H  
 LCG FANCY LYDA 86M  
 REMITALL BOOMER 46B  
 III MS MAUREEN 17X

**Brost Land & Cattle Co.**  
 Box 96  
 Irvine, AB T0J 1V0  
 P:(403)834-2262

**Coppertone Farms Ltd.**  
 420 Short Road,  
 Abbotsford, BC V2S 8A7  
 P:(604)852-4745

**Tee Jay Polled Herefords**  
 Box 160  
 Balcarres, SK S0G 0C0  
 P:(306)334-2727



## MH DAKOTA LAD 6238 1ET

Registration No.: C02911195 Born: April 8, 2006  
Semen Certificates Required: No

**Price: \$50.00/straw minimum 20 straws**

Semen available for:  
Canada & USA

- High seller at 2008 Mrnack Herefords bull sale,
- Mother was 2001 Denver Champion Female,
- EPD trait leader in growth and total maternal,
- Principal sire in WHC 2012 Grand Champion pen of three bulls,
- Sons have extra muscle,
- Daughters very feminine and great producers.

EPDS	CE	BW	WW	YW	MM	TM	MCE	SC	CW	Stay	MPI	FMI	FAT	REA	MARB
	-1.2	2.8	56.2	98.5	35.2	63.3	-4.2	1.0	120.5	-	-	104.4	0.046	0.35	0.08
ACC	.20	.72	.65	.63	.38	-	.21	.40	.39	-	-	.45	.41	.42	.38

SR LAD 447  
**MH DAKOTA 0230**  
JV ANGEL 684

UPSTREAM LAD 1082  
SR KARA 871  
JV GENERAL 418  
VR MISS DOMETT D98

MH PATRIOT  
**MH MISS PATRIOT 971**  
MH MISS RUSTY 476

BB PATRIOT 0293  
MH MISS DONNA 921  
XTD 6T RUST TEMPEST ET 9A  
MH MISS ADVANCE 8195



## LBH 102T SUPER RIB 335X

Registration No.: C02945235 Born: March 14, 2010  
BW: 80 lbs WW: 631 lbs.<sup>adj</sup> YW: 1066 lbs.<sup>adj</sup>  
Semen Certificates Required: No

**Price: \$50.00/straw minimum 20 straws**

Semen available for:  
Canada, USA & Australia

- High seller and Res. Jr. Champion at 2012 Medicine Hat Bull Sale,
- 80 lb. birth weight,
- Large red patches on both eyes and red to toes.
- Extra length.

EPDS	CE	BW	WW	YW	MM	TM	MCE	SC	CW	Stay	MPI	FMI	FAT	REA	MARB
	1.4	3.9	43.9	73.1	18.2	40.2	2.8	0.7	75.0	-0.1	143.7	104.8	0.017	0.19	-0.11
ACC	.09	.38	.31	.33	.12	-	.07	.28	.21	.32	.25	.23	.22	.22	.20

FE 101J SUPER RIB 129P  
**SGC 129P SUPER LAD 102T**  
SGC 24L SUPER STD 7P

FE 7F SUPER LAD 101J  
FE 17E EXTRA LASS 130K  
JOINT-CREEK 1H SUPER LAD 24L  
SGC 787 STANDARD LASS 25M

K 64H RIBSTONE LAD 157K  
**LBH 157K MISS RIBSTONE 26T**  
AGA 191G MISS STANDARD 209J

STANDARD 16E RIBSTONE 64H  
K 61Z SUPER LADY 41G  
AGA 277D STANDARD 191G  
AGA 137Y MISS STANDARD 115A

**WYATT**  
FARMS

**Merle & Neeltje Wyatt and Family**

P: (403)534-2277

Peter: (403)485-2246

Box 30, Arrowwood, Alberta, T0L 0B0

C: (403)485-8289

C: (403)423-0083

wyatt@wildroseinternet.ca





## LBH 168T STANDARD 397W

Registration No.: C02935104 Born: September 18, 2009  
 BW: 92 lbs WW: 623 lbs.<sup>adj</sup> YW: 1,083 lbs.<sup>adj</sup>  
 Semen Certificates Required: No

**Price: \$60.00/Straw or \$50.00/Straw for 20 or more straws**  
**Semen qualifies Worldwide, including Europe**

397W is one of the longest bulls we ever raised and probably the smoothest shouldered bull we ever owned. He is Google eyed on both sides and is solid red. Born in September 2009 as one of eight fall calves as a result of bull trouble, thus the reason for being De horned. We managed to keep him IBR free and as a result his semen qualifies to go to Europe. His pedigree includes some of the top old cattle raised in our herd with a lot of longevity, like the donor cow 115A.

- LBH 73L STANDARD 268P
- AGA 191G STANDARD ET 73L
- LBH 268P STANDARD 168T
- LBH 22B MISS RED DOMINO 102M
- LBH 77H MISS RED BRITISHER 58R
- AGA 16F BRIGADER 77H
- AGA 4016 MISS STANMORE 43L
- AGA 13G GENERAL 114L
- LBH 114L GENERAL 193N
- AGA 137Y MISS STANDARD 115A
- LBH 193N MISS GENERAL 109T
- AGA 656U STANDARD 33G
- AGA 33G MISS STANDARD 171K
- MISS 50Y BRITISHER AGA 79T

EPDS	CE	BW	WW	YW	MM	TM	MCE	SC	CW	Stay	MPI	FMI	FAT	REA	MARB
	-2.5	6.5	38.4	66.8	20.4	39.6	2.0	0.7	78.0	-1.1	135.7	110.2	-0.002	0.08	-0.18
ACC	.10	.54	.44	.41	.11	-	.07	.26	.27	.58	.38	.23	.14	.19	.13



## LBH 157K RIBSTONE 40W

Registration No.: C02928516 Born: February 7, 2009  
 BW: 93 lbs WW: 786 lbs.<sup>adj</sup> YW: 1,111 lbs.<sup>adj</sup>  
 Semen Certificates Required: No

**Price: \$60.00/Straw or \$50.00/Straw for 20 or more straws**  
**Semen qualifies to Canada, USA, & Uruguay**

The best 157K son we raised and probably the most exciting bull we own. His sire 157K needs no introduction and his dam LBH 20S is one of our best young females in the herd, she raised the high indexing Heifer Calf in the herd as a first calf heifer. We believe in and used 40W heavy and he has already 164 registered calves in his first two crops. His females and bulls look terrific, sons working at Bar Pipe Ranch, Carlrams Ranching and Arnold Kruger's.

- STANDARD 16E RIBSTONE 64H
- STANDARD RIBSTONE 16E
- K 64H RIBSTONE LAD 157K
- STANDARD LASS 23E
- K 61Z SUPER LADY 41G
- SNS SUPER PACE ET 61Z
- K 58X MASTER LADY 89Z
- BCD 721G KING 6K
- XTC KING'S DIAMOND LAD 87M
- XTC 9A TEMP DIAMOND 36D
- LBH 87M MISS DIAMOND 20S
- AGA 191G STANDARD ET 91L
- LBH 91L MISS STANDARD 231N
- AGA 18E MISS HOT SHOT 52G

EPDS	CE	BW	WW	YW	MM	TM	MCE	SC	CW	Stay	MPI	FMI	FAT	REA	MARB
	0.6	5.8	42.9	78.7	32.5	54.0	2.7	0.9	97.7	-0.9	153.1	124.0	0.027	0.03	0.38
ACC	.24	.78	.71	.70	.20	-	.18	.51	.38	.85	.59	.50	.45	.46	.43



## CC 77J STERLING 39T

Registration No.: C02900023 Born: January 31, 2007  
 BW: 73 lbs WW: 743 lbs.<sup>adj</sup> YW: 1,117 lbs.<sup>adj</sup>  
 Semen Certificates Required: No

**Price: \$60.00/Straw or \$50.00/Straw for 20 or more straws**  
**Semen qualifies to Canada, USA, Australia, Paraguay, Uruguay, Argentina, New Zealand & South Africa**

Look at his curve bending EPD's, low birth weight to high growth, what a set of numbers. On his first two sets of calves born here at Lilybrook, 36 bull calves averaged 78.3 lbs birth weight, 13 heifer calves averaged 76.6 lbs, yet look at the performance of his sons. He sired the high sellers, LBH 39T STERLING 53W to Upstream Ranch and LBH 39T STERLING 138W to Misty Valley Farms and Mark Law. 39T has 15 sons working in Purebred Herds so far.

- FE 07Y SUPER 129D
- JDA 15W SKYWALKER 07Y
- CC 129D SUPERMAN 77J
- FE 412 DANDY 56X
- CC 42W JULIANA 66Z
- DMF 81N STANDARD 42W
- CC ARROW BRITISHER LASS 47T
- AGA 121G STANMORE 20J
- LBH 20J STANMORE 56M
- AGA 5C MISS ENERLAD 95K
- CC 56M SYLVIA 3R
- WINDY-HILL 26H CASANOVA 8K
- CC 8K SYLVIA 11N
- CC 80H SYLVIA 140L

EPDS	CE	BW	WW	YW	MM	TM	MCE	SC	CW	Stay	MPI	FMI	FAT	REA	MARB
	2.3	0.2	54.2	82.9	25.1	52.2	2.8	1.2	124.3	2.7	165.6	132.2	0.017	-0.12	0.29
ACC	.39	.78	.71	.71	.28	-	.26	.55	.43	.83	.61	.53	.45	.48	.44



**Andy & Margaret Schuepbach**

Phone: (403) 625-4693 Cell: (403) 625-6316 Fax: (403) 625-1500  
 Box 2044, Claresholm, AB T0L 0T0 10 miles (16 km) East of Claresholm to sign, then 4 1/2 miles (7.2 km) North  
 Email: andy@lilybrookherefords.com www.lilybrookherefords.com

**Hans Ulrich**

(403): 625-2237





## MCCOY 58G JACKPOT ET 105X

Registration No.: C02943921 Born: March 16, 2010

BW: 98 lbs WW: 741 lbs.<sup>adj</sup> YW: 1,285 lbs.<sup>adj</sup>

Semen Certificates Required: No

**Price: \$60.00/Straw or \$50.00/Straw for 20 or more straws**  
**Semen qualifies to Canada, Please inquire for other countries**

For Semen Contact Lilybrook Herefords or McCoy Cattle



105X left us here at Lilybrook a tremendous set of first calves, bull calves averaged at 106 weaning index and the heifers at 103, on top of that he left us no horned calves out of our strait horned cow herd. Look at his curve bending EPD's, they are impressive. He was Senior Champion bull and Reserve Grand Champion at the 2012 Farm Fair International Show, where he attracted a bit of attention. Probably one of the easiest keeping bulls on our ranch, his dam is still going at the age of 17 years of age, a proven older pedigree that will be the foundation of our polled cow lines.

EPDS	CE	BW	WW	YW	MM	TM	MCE	SC	CW	Stay	MPI	FMI	FAT	REA	MARB
	2.3	3.5	57.3	100.9	20.6	49.3	2.1	0.8	115.3	-1.6	154.2	125.9	0.028	0.49	0.01
ACC	.20	.59	.50	.42	.22	-	.16	.18	.28	.69	.46	.26	.14	.19	.12

REMITALL KEYNOTE 20X  
 RU 20X GALAXY 58G  
 RU 10A ELM 57E

REMITALL TEAMSTER 9T  
 REMITALL PATRICIA 99P  
 REMITALL ACME 10A  
 RU 40L BUTTERCUP 57Z

MCCOY 36A SUSIE 75F  
 SQUARE-D SUSIE 662Y

JR NICK THE BUTLER P183  
 DUSTY-DEE 302R DESTINY 8Y  
 RLOA ULTIMO ET 74U  
 HAROLDSON'S STUCK-UP LADY 26P



### Andy & Margaret Schuepbach

Phone: (403) 625-4693 Cell: (403) 625-6316 Fax: (403) 625-1500

Box 2044, Claresholm, AB T0L 0T0

10 miles (16 km) East of Claresholm to sign, then 4 1/2 miles (7.2 km) North

Email: andy@lilybrookherefords.com www.lilybrookherefords.com

### The Nicholas Family

Chad & Carrie (306) 436-2086 Fax (306) 436-4613

Gary & Florence (306) 436-4301

Box 479, Milestone, SK SOG 3L0

cnicholas@mccoycattle.com www.mccoycattle.com



McCoy Cattle Co.



Price:  
 \$60.00/straw or  
 \$50.00/straw for  
 20 or more straws  
 Canadian Qualified



Price:  
 \$60.00/straw or  
 \$50.00/straw for  
 20 or more straws  
 Canadian & US  
 Qualified



Price:  
 \$60.00/straw or  
 \$50.00/straw for  
 20 or more straws  
 Canadian & US  
 Qualified



## SS-TOPLINE POWERHOUSE ET 888Z

Registration No.: C02975231 Born: February 15, 2012

BW: 98 lbs WW: 973 lbs.<sup>adj</sup> YW: 1495 lbs.<sup>adj</sup> Semen Certificates Required: No

**Price: Please Call For Pricing**

Tremendously powerful bull with a 4lb/day gain. Admired by Cattlemen everywhere, we display him. King of the Ring, top of the Hereford breed at Stockade Roundup. Farm Fair International Class Winner. We will Breed many of our cows to Powerhouse, if you have seen him, you will know why. **Bob Trefiak 780 842-7836 or Archibalds 842-0118**

EPDS	CE	BW	WW	YW	MM	TM	MCE	SC	CW	Stay	MPI	FMI	FAT	REA	MARB
	-1.1	4.8	57.0	100.1	16.9	45.4	2.3	0.8	132.8	1.0	-	-	-0.012	0.64	0.15
ACC	PE	.22	.20	.21	.15	-	PE	.14	.17	PE	-	-	.16	.16	.16
	GH DIFFERENCE BRITISHER 45L										AR STANDARD PREFORMER 146P				
	GH NEON 17N C02827131										GH PERFORMANCE PASSION 126S				
	GH SIR SIMBA LASS 107										GH PEARL'S PASSION ET 29P				



## GH ADAMS EVEREST ET 244U

Registration No.: C02912716 Born: February 11, 2008

BW: 86 lbs.<sup>adj</sup> WW: 695 lbs.<sup>adj</sup> YW: 1,247 lbs.<sup>adj</sup> Semen Certificates Required: No

**Price: \$50.00/Straw - volume discount available**

**Semen qualifies EEC**

The herd sire that has all the EPDs to fit into any breeding program and a pedigree to make it better. GH Misty Robin 305M had a tremendous show career and produced some of the very best. Yankee, Churchill's high dollar Neon son make Everest's progeny worth the investment. We have had great success in our program breeding heifers to 244U.

Please call and make plans to visit us, see our genetics and a complete listing of semen.

**Semen and Embryo's from World Class Genetics. Canadian and International Qualified.**

EPDS	CE	BW	WW	YW	MM	TM	MCE	SC	CW	Stay	MPI	FMI	FAT	REA	MARB
	0.6	3.6	45.4	82.2	24.7	47.4	4.6	0.5	125.5	-0.1	145.1	176.7	-0.030	0.29	0.26
ACC	.13	.45	.31	.31	.20	-	.11	.15	.23	.14	.21	.22	.19	.20	.18

GH NEON 17N  
 CHURCHILL YANKEE ET  
 CHURCHILL LADY 202

AR MR ROBIN 2798  
 GH MISTY ROBIN 305M  
 JV JENNY 422



Irma, AB

(780) 754-2850

Formerly Trefiak Herefords Since 1945  
**The Genetics You need! For The Cattle You Want!**

www.sscattle.ca

sscattle@telus.net

Registered Horned & Polled Herefords  
 Topline Baldie Commercial Cattle

# SHAR-LO WONDER NUGGET ET 6Y

Registration No.: C02963003 Born: March 30, 2011 Semen Certificates Required: No

BW: 95 lbs YW: 1346 lbs Weight at 20 Months: 2005 lbs SC: 42.5 cm

**Price: \$50.00/Straw minimum 5 Straws**  
**Orders over 25 Straws receive a 10% discount**



Index 124.8 the highest of all Breeds at the Nappan Test Station in Nova Scotia  
 His Yearling Weight of 1346 lbs was the 2nd highest of all breeds at the Nappan Test Station.

### Son of the well known "Wonder Bull" from Remittal West!

EPDS	CE	BW	WW	YW	MM	TM	MCE	SC	CW	Stay	MPI	FMI	FAT	REA	MARB
	-2.2	4.2	49.6	89.0	17.3	42.1	0.1	1.2	98.9	-	-	-	0.005	0.45	0.09
ACC	PE	PE	PE	PE	PE	PE	PE	PE	PE	-	-	-	PE	PE	PE

SHF WONDER M326  
 W18 ET  
 SHF GOVERNESS 236G L37

PLPH TAHLIA 112T  
 FCC 60G MADDUX 4L  
 GLENBURN BROOKE 4N

RRH MR FELT 3008  
 KCF MISS 459 F284  
 MM RSM STOCKMASTER 512  
 SHF INTERSTATE D03 G80  
 JSF 23 NIBBS 60G  
 SVR 15D JADE 554G  
 HAROLDSON'S DRUMMOND ET 56G  
 H-BAR-C ELLDEM 926Y SUSIE 115E

*Shar-Lo Farms*

**SHAR-LO Farms**  
 Lloyd & Sharon Francis  
 C: (506)333-3160  
 P: (506)214-6300

8698 Route 102, Public Landing, NB, E5K 4L3

# XTC Embryos for Sale

**Call For Pricing (Limited Number Offered)**  
**Embryos stored at Davis Reardon, Crossfield, AB**

We are pleased to offer a great embryo mating this spring. The Bob bull needs little introduction after the great showing his progeny had at Agribition and Medicine Hat Pen Show this past fall for Braun Ranches. They won both Champion Pen of Bulls and Females in a large multi breed show. This bull shows the ability to really produce the elite type of females, as well as good doing, maternal and carcass quality bulls. The 85M cow is one of our most productive and profitable females. We have four daughters in the herd and her bulls always sell at the top of our consignments. She is extremely deep sided, stout and thick, yet retains the fresh feminine look of a broody productive cow. Still very productive and good uddered for 11 years of age, she is sound, and very good footed. The kind of cow you want behind your herdbull.



**Sire:**  
**ECR L18 EXTRA DEEP 9279**



**Dam:**  
**VIKING SILVER MISS 85M**

EPDS	CE	BW	WW	YW	MM	TM	MCE	SC	CW	Stay	MPI	FMI	FAT	REA	MARB
	2.0	1.9	52.8	71.6	26.9	53.3	2.0	0.7	42.8	-	-	125.7	-0.009	0.57	-0.07

EPDS	CE	BW	WW	YW	MM	TM	MCE	SC	CW	Stay	MPI	FMI	FAT	REA	MARB
	-1.8	5.2	39.3	70.5	14.6	34.3	0.7	0.5	107.4	-0.5	127.0	110.7	0.005	0.04	-0.13

## Expected Average Progeny Values

EPDS	CE	BW	WW	YW	MM	TM	MCE	SC	CW	Stay	MPI	FMI	FAT	REA	MARB
	0.1	3.6	46.1	71.1	20.8	43.8	1.4	0.6	75.1	-	-	118.2	-0.002	0.31	-0.10

GO EXCEL L18  
**ECR L18 EXTRA DEEP 9279**  
 OXH CHRISTI 0028

DD EXCEL DESIGN 40  
 GO MS 124 ADVANCE 7005  
 CL 1 DOMINO 5131E  
 OXH LOLA 8328

FA SILVER CANADIAN ET 37D  
**VIKING SILVER MISS 85M**  
 SANDHILL GEM L11

SNS SILVER PRAIRIE 50B  
 FA BRITISHER LADY ET 1Y  
 XTD 6T RUST TEMPEST ET 9A  
 STANDARD LADY 9148



**The Templetons**  
 Byron and Carolyn, Roberta and Rosie  
 P: (403) 345-3889 Byron's Cell: (403) 308-9971  
 Travis and Jocelyn (306) 295-7246  
 xtcherf@shockware.com www.xtchereforids.com



## AGA 13G GENERAL 114L

Registration No.: C02795506 Born: February 22, 2001  
 BW: 94 lbs. WW: 687 lbs. adj YW: 1,207 lbs. adj  
 Semen Certificates Required: No



**Price: \$70.00/straw**

Top % Of Breed For:  
 SC 1%, STAY 15%, MPI 20%  
 Our favorite Trait Leader was named the Southern Alberta Bull Spectacular "People's Choice" winner in 2002. Since then his progeny have won the same award & other honours. 114L's dam was a "Dam of Distinction" out of a "Dam of Great Distinction" out of our great foundation cow,

61N! 114L's females are incredible - femininity with thickness, volume, sound feet & legs and easy keeping. Stunning good looks plus heavy weights at 205 days & on, keeps 114L on top with the best avg YR indexes year after year.

EPDS	CE	BW	WW	YW	MM	TM	MCE	SC	CW	Stay	MPI	FMI	FAT	REA	MARB
	-7.1	7.1	46.0	81.8	21.6	44.6	0.4	1.6	79.3	1.1	153.3	125.9	-0.009	-0.12	-0.16
ACC	.47	.85	.80	.81	.68	-	.44	.58	.67	.86	.77	.65	.61	.62	.59

GENERATOR STANDARD 10A  
**GEM GENERAL 13G**  
 AD 75N LASS 31W

STANDRD LAD 656 4ET  
**AGA 656U MISS STANDARD ET 17H**  
 AGA MISS 80S VOLTAGE ET 14X

SNS GENERATOR 28X  
 MISS 417 STAN SUPERB 7Y  
 MF STANDARD LAD 75N  
 COMMANDER LASS 14T  
 HI STANDARD LAD 20P  
 BELL L 60H DOMINO LASS 82K  
 LCI ET HIGH VOLTAGE 80S  
 MISS 51K BRITISHER AGA 61N

## AGA 20J STANMORE 21M

Registration No.: C02805799 Born: February 12, 2002  
 BW: 92 lbs. WW: 674 lbs. adj YW: 1,095 lbs. adj  
 Semen Certificates Required: No



**Price: \$70.00/straw**

Top % of the Breed: CE 30%  
 BW 10%, WW 30%, Milk 1%,  
 TM 1%, MCE 1%, MPI 1%,  
 FMI 10%, Marb 10%  
 21M ranks in the top % of the Hereford breed in many traits, particularly CE & BW! He produces offspring with lots of vigor at birth, good performance and daughters that we are very proud of. Over 90 of his calves in our herd averaged

77 lbs birth weight yet still indexed above average for both weaning and yearling! 21M is breeding exceptionally well - great calving ease, milk & growth and marbling - the whole package. Trait leader in 5 areas.

EPDS	CE	BW	WW	YW	MM	TM	MCE	SC	CW	Stay	MPI	FMI	FAT	REA	MARB
	2.1	1.0	50.5	76.4	36.3	61.6	6.0	0.7	65.5	0.2	176.0	146.4	-0.007	-0.32	0.20
ACC	.43	.81	.75	.76	.64	-	.35	.40	.62	.86	.74	.60	.55	.55	.52

AGA 4016D STANMORE 121G  
**AGA 121G STANMORE 20J**  
 AGA 40E MISS STANMORE 80G

XTC 15Z ENERLAD STAN 5C  
**AGA 5C MISS ENERLAD 68K**  
 AGA 154F MISS BRITISHER 159H

CTY K STANMORE 4016D  
 AGA 99B CENTENNIAL 51D  
 AGA 9012 STANMORE 40E  
 AGA 16B MISS GENERATOR 20E  
 XTC ENERLAD SELKIRK 15Z  
 XTC 37Y STAN LASS 82A  
 AGA 37B BRITISHER 154F  
 AGA 22B BRIGADER 83F

For embryos and other semen available, please contact Peter: (403) 625-1036

**Peter Ulrich**  
 Cell: (403) 625-1036  
 Box 843, Claresholm, AB T0L 0T0

**Hans Ulrich**  
 Phone: (403) 625-2237  
 Email: peter@ulrichhereforids.com





National Polled Hereford Reserve Champion Junior Yearling Bull  
- 2012 World Hereford Conference



**Pugh Farms Est. 1910**

Farm: (780) 755 - 2207  
Greg: (780) 806 - 1319  
Jim and Linda: (780) 842 - 7988  
Neil: (780) 842 - 8809

**ECR LOOSE CHANGE 1251**

Registration No.: C02969013 Born: April 6, 2011  
BW: 83 lbs.<sup>adj</sup> WW: 891 lbs.<sup>adj</sup>  
Semen Certificates Required: No

**Price: \$40.00/Straw minimum 5 Straws**

LOOSE CHANGE is the new Hereford. He is the type to exhibit an abundance of muscle shape down into the lower third of his quarter. He is square made and stands on a big solid made foot. He carries pigmentation and a well hooded eye. Use him to add muscle shape, pounds at weaning and to add REA. He has had a powerful show career in his first three Canadian outings being named WHC Reserve Junior Champion, Lloydminster Stockade Roundup Grand Champion and top 4 Lloyd Supreme, and also rounding out the season placing in the top 6 of all the Bulls in the Alberta Supreme Show at Farmfair. We believe he has a bright future in the breed and in the industry as he exemplifies the characteristics that in turn turn to profit in the cattle business. Unique pedigree and on a unique individual. Feel free to contact us anytime with any inquiries.

EPDS	CE	BW	WW	YW	MM	TM	MCE	SC	CW	Stay	MPI	FMI	FAT	REA	MARB
	4.0	4.1	71.6	112.8	18.9	54.7	3.5	0.5	106.6	-	-	153.4	0.004	1.05	-0.07
ACC	.08	.37	.30	.31	.10	-	.07	.09	.21	-	-	.20	.18	.18	.15

BR MOLER ET  
PURPLE CURRENCY 24U ET  
PURPLE MARILYNNE 9M  
NJW 1Y WRANGLER 19D  
ECR 19D HUNNY 7149  
ECR 557 MISS HUNNY 5149 12ET

REMITALL ONLINE 122L  
DM L1 DOMINETTE 820  
JSF 37 271 DEVO 23C  
JH MISS MADALYNN  
CIRCLE-D WRANGLER 832W  
NJW FROSTY 1Y  
HH EUREKA 557M  
RCH L1 DOMINETTE 0001

Edgerton, AB, Canada  
Email: gjpugh@hotmail.com  
Web: www.pughfarms.ca



EPDS	CE	BW	WW	YW	MM	TM	MCE	SC	CW	Stay	MPI	FMI	FAT	REA	MARB
	-6.3	8.3	81.8	133.8	23.0	63.9	-0.9	1.1	130.2	-3.4	183.0	160.0	0.007	0.68	0.01
ACC	.07	.50	.39	.39	.09	-	.06	.05	.25	.61	.37	.17	.04	.11	.03

DXB 73J PROWLER 35M  
DXB 35M TORQUE 26T  
BAR-E-L 74F CHANTELE 16K  
K-COW NACHO MAN ET 36N  
DUNROBIN SALSA 87S  
DUNROBIN REDLADY 77P

REMITALL JONATHON 73J  
BAR-E-L 823B VICTORIA 44D  
RU 20X BOULDER 57G  
TA-BAR CHANTELE ET 74F  
CS BOOMER 29F  
TEE-JAY 2Z ORCHID ET 20D  
DUNROBIN REDMAN 75L  
DUNROBIN STANDARD LADY 20L

**Wayne Skelton**

RR#1 Winfield, AB T0C 2X0  
P: (780) 839-8600

lklcows@gmail.com www.skeltoncattlecompany.com



**K-Cow Wideload 87W**

Registration No.: C02930395 Born: March 21, 2009  
BW: 96 lbs WW: 908 lbs.<sup>adj</sup> YW: 1338 lbs.<sup>adj</sup>  
Semen Certificates Required: No

**Price: 20-dose semen packages: \$1,000.00**

**DNA verified to be Homozygous Polled**

Possesses some of the highest gain EPD's of the breed...  
and NOTHING BEATS PRICE TIMES POUNDS!

WIDELOAD on the move!

<http://www.youtube.com/watch?v=jUKjq4tyaBY>

**Champion Mature Polled Hereford Bull 16th WHC Olds**



# NBG 69T The Wonderer 36R ET 3W

Registration No.: C02927066 Born: January, 7, 2009 BW: 93 lbs WW: 881 lbs.<sup>adj</sup> Semen Certificates Required: No

**Price: \$40.00/straw minimum 10**

Semen available for: Canada, USA, E.U. approved including Eastern Europe



**Agribition - 2010 Reserve Champion, 2009 Bull Calf Champion**

EPDS	CE	BW	WW	YW	MM	TM	MCE	SC	CW	Stay	MPI	FMI	FAT	REA	MARB
	-2.7	4.8	56.6	92.8	18.0	46.3	3.1	0.1	101.8	-1.0	154.0	135.8	-0.004	0.62	-0.09
ACC	.19	.65	.45	.39	.16	—	.14	.17	.26	.69	.43	.23	.11	.16	.09

**HARVIE TRAVELER 69T**  
KPAIRURU ABERDEEN 03 0047  
HARVIE PEARL 129P

**BLAIR-ATHOL 20 GRETCHEN ET 36R**  
REMITALL KEYNOTE 20X  
MHR 35A HAZEL 54A 18D

LEELANDS TRANSITION T7  
KPAIRURU PLUM T44  
LEVELDALE KODIAK 23C ET 19K  
EASTON 26Y IRON LADY 43A

REMITALL TEAMSTER 9T  
REMITALL PATRICIA 99P  
GK ROCK STEADY 35A  
MHR 3W HAZEL 91T 54A

His calves continue to do well in the show ring and feedlot

**News Flash** - Son of NBG 3W - Justa 3W Rambler 1T 3Z (tattoo DJA 1Z) is in the top 10% of weight gain at Cattleland 2012-2013 Feed Conversion Trials.

"very impressed with Wonderer calves, show quality"  
-Quote from Breeder in Denmark

*Just Joined the Team*

## SQUARE-D FRANKLIN 995Z

Registration No.: C02971808 Born: March 8, 2012  
BW: 95 lbs

Semen Expected in 2014

EPDS	CE	BW	WW	YW	MM	TM	MCE	SC	CW	Stay	MPI	FMI	FAT	REA	MARB
	-1.1	4.8	49.4	82.8	22.8	47.5	2.2	0.7	81.2	—	—	115.6	0.011	0.23	-0.11
ACC	.07	.37	.21	.20	.09	—	.06	.05	.14	—	—	.11	.05	.08	.04

**STAR MARKET INDEX 70X ET**  
RVP STAR 533P CAN-AM ET 57U  
NJW 29M INVESTOR GAL 129R

STAR BRIGHT FUTURE 533P ET  
STAR BONNIE BETH 54N  
KJ 520E INVESTOR 532M ET  
NJW 57G 23E DEW 29M



**Son of Market Index**

**SQUARE-D JAEDON 659P**  
SADDLE-VALLEY 203E HAMM 822H  
SQUARE-D VICTORIA 594J

SADDLE-VALLEY HEISMAN 203E  
SADDLE-VALLEY GOLDIE 45D  
SQUARE-D EDGE 694D  
SQUARE-D KEPSAKE 994C

**Burt & Nancy Grundy**

P: (613)489-3136  
C: (613)791-7505  
F: (613)489-1006

2932 Mackey Rd. North Gower, Ontario K0A 2T0  
nbghereford@xplornet.com  
www.nbgpolledherefords.com



**Bulls For Sale**



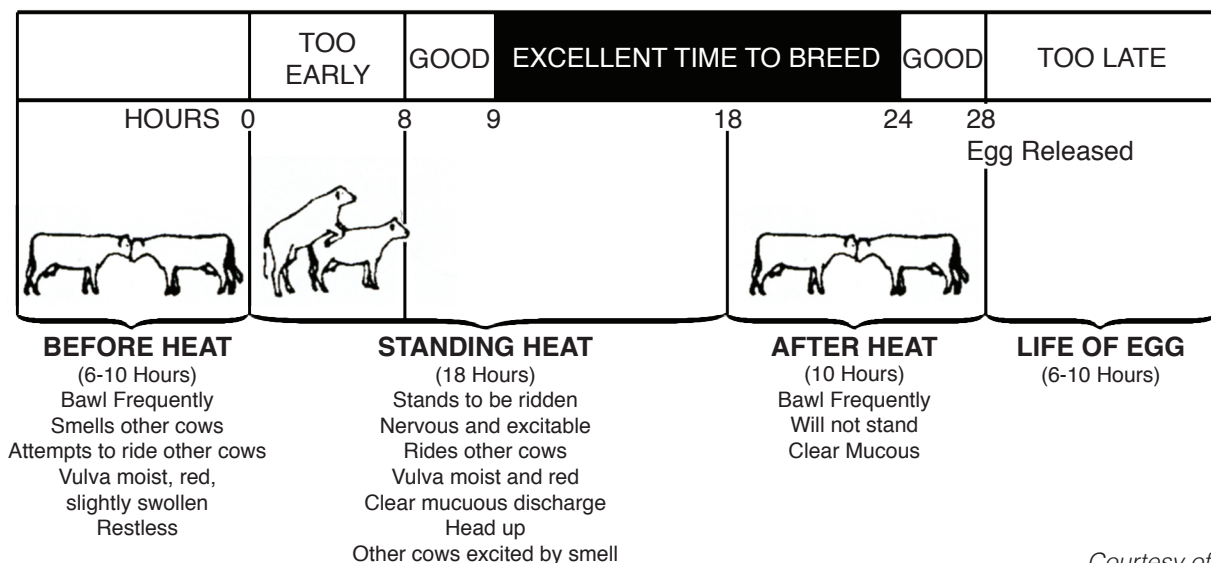
Date of Service	Date of Birth	Date of Service	Date of Birth	Date of Service	Date of Birth	Date of Service	Date of Birth	Date of Service	Date of Birth	Date of Service	Date of Birth
Jan. 1	Oct. 12	Mar. 3	Dec. 12	May. 3	Feb. 11	Jul. 3	Apr. 13	Sept. 2	Jun. 13	Nov. 2	Aug. 13
Jan. 2	Oct. 13	Mar. 4	Dec. 13	May. 4	Feb. 12	Jul. 4	Apr. 14	Sept. 3	Jun. 14	Nov. 3	Aug. 14
Jan. 3	Oct. 14	Mar. 5	Dec. 14	May. 5	Feb. 13	Jul. 5	Apr. 15	Sept. 4	Jun. 15	Nov. 4	Aug. 15
Jan. 4	Oct. 15	Mar. 6	Dec. 15	May. 6	Feb. 14	Jul. 6	Apr. 16	Sept. 5	Jun. 16	Nov. 5	Aug. 16
Jan. 5	Oct. 16	Mar. 7	Dec. 16	May. 7	Feb. 15	Jul. 7	Apr. 17	Sept. 6	Jun. 17	Nov. 6	Aug. 17
Jan. 6	Oct. 17	Mar. 8	Dec. 17	May. 8	Feb. 16	Jul. 8	Apr. 18	Sept. 7	Jun. 18	Nov. 7	Aug. 18
Jan. 7	Oct. 18	Mar. 9	Dec. 18	May. 9	Feb. 17	Jul. 9	Apr. 19	Sept. 8	Jun. 19	Nov. 8	Aug. 19
Jan. 8	Oct. 19	Mar. 10	Dec. 19	May. 10	Feb. 18	Jul. 10	Apr. 20	Sept. 9	Jun. 20	Nov. 9	Aug. 20
Jan. 9	Oct. 20	Mar. 11	Dec. 20	May. 11	Feb. 19	Jul. 11	Apr. 21	Sept. 10	Jun. 21	Nov. 10	Aug. 21
Jan. 10	Oct. 21	Mar. 12	Dec. 21	May. 12	Feb. 20	Jul. 12	Apr. 22	Sept. 11	Jun. 22	Nov. 11	Aug. 22
Jan. 11	Oct. 22	Mar. 13	Dec. 22	May. 13	Feb. 21	Jul. 13	Apr. 23	Sept. 12	Jun. 23	Nov. 12	Aug. 23
Jan. 12	Oct. 23	Mar. 14	Dec. 23	May. 14	Feb. 22	Jul. 14	Apr. 24	Sept. 13	Jun. 24	Nov. 13	Aug. 24
Jan. 13	Oct. 24	Mar. 15	Dec. 24	May. 15	Feb. 23	Jul. 15	Apr. 25	Sept. 14	Jun. 25	Nov. 14	Aug. 25
Jan. 14	Oct. 25	Mar. 16	Dec. 25	May. 16	Feb. 24	Jul. 16	Apr. 26	Sept. 15	Jun. 26	Nov. 15	Aug. 26
Jan. 15	Oct. 26	Mar. 17	Dec. 26	May. 17	Feb. 25	Jul. 17	Apr. 27	Sept. 16	Jun. 27	Nov. 16	Aug. 27
Jan. 16	Oct. 27	Mar. 18	Dec. 27	May. 18	Feb. 26	Jul. 18	Apr. 28	Sept. 17	Jun. 28	Nov. 17	Aug. 28
Jan. 17	Oct. 28	Mar. 19	Dec. 28	May. 19	Feb. 27	Jul. 19	Apr. 29	Sept. 18	Jun. 29	Nov. 18	Aug. 29
Jan. 18	Oct. 29	Mar. 20	Dec. 29	May. 20	Feb. 28	Jul. 20	Apr. 30	Sept. 19	Jun. 30	Nov. 19	Aug. 30
Jan. 19	Oct. 30	Mar. 21	Dec. 30	May. 21	Mar. 1	Jul. 21	May. 1	Sept. 20	Jul. 1	Nov. 20	Aug. 31
Jan. 20	Oct. 31	Mar. 22	Dec. 31	May. 22	Mar. 2	Jul. 22	May. 2	Sept. 21	Jul. 2	Nov. 21	Sept. 1
Jan. 21	Nov. 1	Mar. 23	Jan. 1	May. 23	Mar. 3	Jul. 23	May. 3	Sept. 22	Jul. 3	Nov. 22	Sept. 2
Jan. 22	Nov. 2	Mar. 24	Jan. 2	May. 24	Mar. 4	Jul. 24	May. 4	Sept. 23	Jul. 4	Nov. 23	Sept. 3
Jan. 23	Nov. 3	Mar. 25	Jan. 3	May. 25	Mar. 5	Jul. 25	May. 5	Sept. 24	Jul. 5	Nov. 24	Sept. 4
Jan. 24	Nov. 4	Mar. 26	Jan. 4	May. 26	Mar. 6	Jul. 26	May. 6	Sept. 25	Jul. 6	Nov. 25	Sept. 5
Jan. 25	Nov. 5	Mar. 27	Jan. 5	May. 27	Mar. 7	Jul. 27	May. 7	Sept. 26	Jul. 7	Nov. 26	Sept. 6
Jan. 26	Nov. 6	Mar. 28	Jan. 6	May. 28	Mar. 8	Jul. 28	May. 8	Sept. 27	Jul. 8	Nov. 27	Sept. 7
Jan. 27	Nov. 7	Mar. 29	Jan. 7	May. 29	Mar. 9	Jul. 29	May. 9	Sept. 28	Jul. 9	Nov. 28	Sept. 8
Jan. 28	Nov. 8	Mar. 30	Jan. 8	May. 30	Mar. 10	Jul. 30	May. 10	Sept. 29	Jul. 10	Nov. 29	Sept. 9
Jan. 29	Nov. 9	Mar. 31	Jan. 9	May. 31	Mar. 11	Jul. 31	May. 11	Sept. 30	Jul. 11	Nov. 30	Sept. 10
Jan. 30	Nov. 10	Apr. 1	Jan. 10	Jun. 1	Mar. 12	Aug. 1	May. 12	Oct. 1	Jul. 12	Dec. 1	Sept. 11
Jan. 31	Nov. 11	Apr. 2	Jan. 11	Jun. 2	Mar. 13	Aug. 2	May. 13	Oct. 2	Jul. 13	Dec. 2	Sept. 12
Feb. 1	Nov. 12	Apr. 3	Jan. 12	Jun. 3	Mar. 14	Aug. 3	May. 14	Oct. 3	Jul. 14	Dec. 3	Sept. 13
Feb. 2	Nov. 13	Apr. 4	Jan. 13	Jun. 4	Mar. 15	Aug. 4	May. 15	Oct. 4	Jul. 15	Dec. 4	Sept. 14
Feb. 3	Nov. 14	Apr. 5	Jan. 14	Jun. 5	Mar. 16	Aug. 5	May. 16	Oct. 5	Jul. 16	Dec. 5	Sept. 15
Feb. 4	Nov. 15	Apr. 6	Jan. 15	Jun. 6	Mar. 17	Aug. 6	May. 17	Oct. 6	Jul. 17	Dec. 6	Sept. 16
Feb. 5	Nov. 16	Apr. 7	Jan. 16	Jun. 7	Mar. 18	Aug. 7	May. 18	Oct. 7	Jul. 18	Dec. 7	Sept. 17
Feb. 6	Nov. 17	Apr. 8	Jan. 17	Jun. 8	Mar. 19	Aug. 8	May. 19	Oct. 8	Jul. 19	Dec. 8	Sept. 18
Feb. 7	Nov. 18	Apr. 9	Jan. 18	Jun. 9	Mar. 20	Aug. 9	May. 20	Oct. 9	Jul. 20	Dec. 9	Sept. 19
Feb. 8	Nov. 19	Apr. 10	Jan. 19	Jun. 10	Mar. 21	Aug. 10	May. 21	Oct. 10	Jul. 21	Dec. 10	Sept. 20
Feb. 9	Nov. 20	Apr. 11	Jan. 20	Jun. 11	Mar. 22	Aug. 11	May. 22	Oct. 11	Jul. 22	Dec. 11	Sept. 21
Feb. 10	Nov. 21	Apr. 12	Jan. 21	Jun. 12	Mar. 23	Aug. 12	May. 23	Oct. 12	Jul. 23	Dec. 12	Sept. 22
Feb. 11	Nov. 22	Apr. 13	Jan. 22	Jun. 13	Mar. 24	Aug. 13	May. 24	Oct. 13	Jul. 24	Dec. 13	Sept. 23
Feb. 12	Nov. 23	Apr. 14	Jan. 23	Jun. 14	Mar. 25	Aug. 14	May. 25	Oct. 14	Jul. 25	Dec. 14	Sept. 24
Feb. 13	Nov. 24	Apr. 15	Jan. 24	Jun. 15	Mar. 26	Aug. 15	May. 26	Oct. 15	Jul. 26	Dec. 15	Sept. 25
Feb. 14	Nov. 25	Apr. 16	Jan. 25	Jun. 16	Mar. 27	Aug. 16	May. 27	Oct. 16	Jul. 27	Dec. 16	Sept. 26
Feb. 15	Nov. 26	Apr. 17	Jan. 26	Jun. 17	Mar. 28	Aug. 17	May. 28	Oct. 17	Jul. 28	Dec. 17	Sept. 27
Feb. 16	Nov. 27	Apr. 18	Jan. 27	Jun. 18	Mar. 29	Aug. 18	May. 29	Oct. 18	Jul. 29	Dec. 18	Sept. 28
Feb. 17	Nov. 28	Apr. 19	Jan. 28	Jun. 19	Mar. 30	Aug. 19	May. 30	Oct. 19	Jul. 30	Dec. 19	Sept. 29
Feb. 18	Nov. 29	Apr. 20	Jan. 29	Jun. 20	Mar. 31	Aug. 20	May. 31	Oct. 20	Jul. 31	Dec. 20	Sept. 30
Feb. 19	Nov. 30	Apr. 21	Jan. 30	Jun. 21	Apr. 1	Aug. 21	Jun. 1	Oct. 21	Aug. 1	Dec. 21	Oct. 1
Feb. 20	Dec. 1	Apr. 22	Jan. 31	Jun. 22	Apr. 2	Aug. 22	Jun. 2	Oct. 22	Aug. 2	Dec. 22	Oct. 2
Feb. 21	Dec. 2	Apr. 23	Feb. 1	Jun. 23	Apr. 3	Aug. 23	Jun. 3	Oct. 23	Aug. 3	Dec. 23	Oct. 3
Feb. 22	Dec. 3	Apr. 24	Feb. 2	Jun. 24	Apr. 4	Aug. 24	Jun. 4	Oct. 24	Aug. 4	Dec. 24	Oct. 4
Feb. 23	Dec. 4	Apr. 25	Feb. 3	Jun. 25	Apr. 5	Aug. 25	Jun. 5	Oct. 25	Aug. 5	Dec. 25	Oct. 5
Feb. 24	Dec. 5	Apr. 26	Feb. 4	Jun. 26	Apr. 6	Aug. 26	Jun. 6	Oct. 26	Aug. 6	Dec. 26	Oct. 6
Feb. 25	Dec. 6	Apr. 27	Feb. 5	Jun. 27	Apr. 7	Aug. 27	Jun. 7	Oct. 27	Aug. 7	Dec. 27	Oct. 7
Feb. 26	Dec. 7	Apr. 28	Feb. 6	Jun. 28	Apr. 8	Aug. 28	Jun. 8	Oct. 28	Aug. 8	Dec. 28	Oct. 8
Feb. 27	Dec. 8	Apr. 29	Feb. 7	Jun. 29	Apr. 9	Aug. 29	Jun. 9	Oct. 29	Aug. 9	Dec. 29	Oct. 9
Feb. 28	Dec. 9	Apr. 30	Feb. 8	Jun. 30	Apr. 10	Aug. 30	Jun. 10	Oct. 30	Aug. 10	Dec. 30	Oct. 10
Mar. 1	Dec. 10	May. 1	Feb. 9	Jul. 1	Apr. 11	Aug. 31	Jun. 11	Oct. 31	Aug. 11	Dec. 31	Oct. 11
Mar. 2	Dec. 11	May. 2	Feb. 10	Jul. 2	Apr. 12	Sept. 1	Jun. 12	Nov. 1	Aug. 12		

# Are You Prepared For Breeding Season?

It's never too early to think ahead and prepare for the upcoming breeding season.

We suggest following these simple steps to save time, avoid last minute hassle and make life a little easier for yourself and the people you work and live with.

- Make sure your cow herd is healthy and in good breeding condition, proper nutrition is key.
- Inspect your tank and have it filled with liquid nitrogen before you order semen.
- Allow enough time for shipping. It's best to order semen at least two weeks in advance of breeding date.
- Make a check list for A.I. supplies and have these items on hand in advance of breeding.
- Record your work, make sure your record keeping tools are accessible so you'll be sure to use them.



*Courtesy of Alta Genetics*

## EPDs Made Easy By Karin Schmid, M.Sc.

Expected Progeny Differences (EPDs) are the best scientific tool available for improving genetic merit within a herd. Unfortunately, this tool is often misunderstood and misused, causing confusion and distrust. An EPD is the difference between the predicted average performance of an animal's future progeny and the average progeny performance of another animal whose EPD is zero, assuming that bulls are mated to similar cows, or vice versa. It is important to remember that an EPD is not a prediction of individual performance. Information used in computing EPDs includes pedigree and performance of relatives, self, and progeny. An EPD does not correspond to any specific value for a particular trait. (i.e. a weaning weight EPD of 46.6 does not equal an actual weaning weight of 650 lbs for an animal's progeny). Nor can EPDs for different breeds be compared to one another.

The method used to compute EPDs takes into account environmental & management differences among contemporary groups (animals of the same age and sex raised under the same management conditions), the genetic merit of cows that a bull is bred to, an animal's own performance and that of their relatives, and genetic trends of the entire breed. It is often thought that EPDs are calculated in the same way as 205-day adjusted weights. This is not the case. To calculate EPDs on all recorded animals many more than 1 million equations must be calculated simultaneously.

A bull with great EPDs does not guarantee a superior calf crop. A common producer complaint about EPDs is that they do not seem to correspond to actual data. As EPDs rely on information provided by the producer, it is critical that the correct information be submitted (e.g. correctly identifying different contemporary groups). In addition, billions of genetically different progeny are possible from just a single mating!

This means that there is a lot of variation possible. Producers should also remember that EPDs are a prediction of the average progeny performance. Therefore it is very possible to have a calf or two that don't fit in with the rest! This is where accuracy comes in.

Accuracy is a value between 0 and 1 that attempts to determine how close the prediction (EPD) is to the true breeding value. Accuracy values increase as the amount of information known on an animal increases (what is known about his own performance, relative's performance, and progeny performance). Charts provided in the Sire Summary and EPD Tools, Averages & Trends documents on the CHA website provide a good example of how EPDs can change with differing accuracy levels. The higher the accuracy, the less likely an EPD will change with the addition of new data. Accuracy represents how close the reported EPD is to the true genetic merit of the animal.

	Bull A	Bull B
Calf #1	700	625
Calf #2	600	615
Calf #3	605	650
Calf #4	610	640

Average WW of calves from Bull A = 628.8

Average WW of calves from Bull B = 632.5

Bull A's WW EPD is 51.5, with an accuracy of .75

Bull B's WW EPD is 56.0, with an accuracy of .75

The difference in the two bulls' WW EPDs is 4.5, which is very close to the difference between the average actual weaning weights of their calves in this example, which amounts to 3.7. Even though Bull A has



**To order additional copies of Herefords - The Next Generation 2013 Semen and Embryo Directory, send this form to the office or call Brad at 1 888 836 7242**

NAME

ADDRESS

CITY/TOWN

PROVINCE

POSTAL CODE

NUMBER OF COPIES

**Canadian Hereford Association**

5160 Skyline Way NE  
Calgary, Alberta T2E 6V1

Phone: (403) 275-2662  
Fax: (403) 295-1333

Toll Free Phone (888) 836-7242  
Toll Free Fax (888) 824-2329

# Cover Photo Contest!



# ADVERTISE IN THE AUGUST 2013 HERD SIRE EDITION

Think your photo has what it takes to be the cover shot of the August 2013 Herd Reference Issue of The Digest? We're looking for submissions from across Canada of Hereford Cattle, so run out there with your cameras and get busy! **OR** Do you have a great shot from last year? Or maybe 10 years ago? Send those in too. We want to see them all!

### Photo Requirements:

1. Keep in mind this is for the August issue, so a summer photo is ideal, but don't let that stop you from sending photos from all seasons. Also send us your pictures of Hereford Influence Cattle and Hereford Events and anything else Hereford related! We will be featuring your photos and stories on the contents page and in Letters to The Association.
2. Have a story to go along with the photo? Send that in as well. We would love to hear what it took to get that perfect shot!
3. Let us know where the photo was taken and who took the picture.
4. Shots that are taken as a portrait work best for the cover, but again, send us any great landscape photos you have. The cover isn't the only place we may use your photos!
5. Send your photos in with the original resolution, please do not edit or crop the photos. We will take care of that at the office!
6. You don't have to be a member to submit your photos!
7. Please note that all photos submitted become property of the Canadian Hereford Association and can be utilized in any Canadian Hereford Association publications or other CHA advertising. Email your photos to [samara@hereford.ca](mailto:samara@hereford.ca)

To book your full, half, quarter or strip ad contact:

Brad Dubeau  
[brad@hereford.ca](mailto:brad@hereford.ca)  
 1-888-836-7242

AD Deadline is  
**JUNE 17, 2013**

AD SIZE	FOUR COLOUR PROCESS
Full Page AD	\$1,000.00
Contract Rate for 2010, <small>3 full pages per year</small>	\$2500.00
1/2 Page AD	\$600.00
1/4 Page AD	\$400.00
Strip AD	\$300.00
Canada Wide Quick Reference AD	\$250.00/year
Back Cover	\$1,300.00
Inside Front Cover	\$1,200.00
Inside Back Cover	\$1,100.00

Please add 5% GST or applicable HST to all Ad Rates and Subscription Rates  
 Agency commissions are additional. Covers are booked on a first-come, first-served basis and can be contracted for the year. Discounted contract rates do not apply to covers.

a calf with the highest weaning weight, the rest of the calves show that his EPD should be lower than Bull B's. Large contemporary groupings and large numbers of progeny in general will result in an EPD that reflects actual data much more closely.

The CHA is involved in a four-country genetic evaluation, called PACE (Pan American Cattle Evaluation), which includes data from Canada, the United States, Argentina, and Uruguay. EPDs on animals from

these four countries are directly comparable. The evaluation is run twice yearly, in July and December. For more information, please read the EPD Tools, Averages & Trends and Sire Summary Introduction documents (also updated twice yearly) on the CHA website or contact Val Wells at the office.

# Canadian Hereford Association EPDs

## Calving Ease EPD and Accuracy

Calving Ease EPDs are calculated using birth weight and calving ease score information. Calving ease EPDs represent the ease with which progeny of an animal are born to first calf heifers. The EPD is expressed as a percent probability, with a higher value representing calves with a higher probability of being born unassisted.

## Birth Weight EPD and Accuracy

Birth weight is an indicator of calving ease. Higher birth weight EPDs usually indicate more calving difficulty.

## Weaning Weight EPD and Accuracy

The weaning EPD reflects progeny growth differences up to 205 days of age.

## Yearling Weight EPD and Accuracy

The yearling EPD reflects progeny growth differences through to 365 days of age.

## Milk EPD and Accuracy

The milk EPD indicates the ability of a sire's daughters to provide their calves with an environment that encourages growth from birth to weaning, through mothering ability and milk production. This EPD is expressed in the expected difference in pounds of calf at weaning.

## Total Maternal EPD

Also known as Milk + Growth, this EPD combines the milk EPD plus 1/2 the weaning weight EPD. It is expressed in pounds of calf weaned at 205 days and combines the genetics for pre-weaning growth and the influence of the maternal environment on the weaning weight of the daughter's progeny.

## Maternal Calving Ease EPD and Accuracy

Maternal Calving Ease EPD represents the ease with which a sire's daughters will calve as first calf heifers, when compared to daughters of other sires. The EPD is expressed as a percent probability, with a higher value representing daughters with a higher probability of unassisted calving.

## Scrotal Circumference EPD and Accuracy

The Scrotal Circumference EPD reflects differences in scrotal measurements, taken in centimetres and adjusted to 365 days of age. The SC EPD is positively associated with age at puberty of progeny.

## Cow WT EPD and Accuracy

The Cow WT EPD reflects differences in the mature weight of a sire's daughters. This is important as it is related to maintenance energy requirements.

## Stayability EPD and Accuracy

The Stay EPD reflects differences in the probability that a sire's daughters will remain in production to produce 3 consecutive calves when retained as breeding heifers.

## Maternal Productivity Index and Accuracy

MPI combines the traits of weaning weight, milk, cow weight and stayability based on their relative economic importance, and then ranks animals based on the predicted maternal strength of their progeny within the population.

## Feedlot Merit Index and Accuracy

FMI combines the traits of calving ease, weaning weight, yearling weight, rib-eye area, marbling and fat based on their relative economic importance, and then ranks animals based on the predicted profitability of their feeder progeny within the population.

## REA EPD and Accuracy

The REA EPD reflects differences in rib-eye area carcass measures in feeder progeny.

## Fat EPD and Accuracy

The Fat EPD reflects differences in carcass backfat measures in feeder progeny.

## Marbling Fat EPD and Accuracy

The MARB EPD reflects differences in carcass measures of marbling in feeder progeny, using USDA marbling scores.

EPDs denoted in **red** indicate a Trait Leader. Trait leaders are in the top 20% of the breed with 0.60 accuracy.

Hereford EPD Averages															
Spring 2013	CE (%)	BW (lbs)	WW (lbs)	YW (lbs)	Milk (lbs)	TM (lbs)	MCE (%)	SC (cm)	CW (lbs)	Stay (%)	MPI	FMI	REA (in <sup>2</sup> )	FAT (in)	MARB
Active Sires*	0.6	3.5	47.0	77.0	19.0	43.0	1.2	0.8	87.0	-0.2	142.8	125.4	0.29	0.004	0.06
Active Dams**	0.2	3.6	42.0	69.0	16.0	38.0	0.7	0.6	82.0	-0.3	135.3	119.7	0.19	0.001	0.03
Calves***	0.7	3.4	46.0	75.0	19.0	42.0	1.1	0.7	86.0	-0.2	140.2	122.7	0.26	0.003	0.05

CE - Calving Ease BW - Birth Weight WW - Weaning Weight YW - Yearling Weight MILK - Milk TM - Total Maternal (1/2 WW + Milk) MCE - Maternal Calving Ease SC - Scrotal CW - Cow Weight Stay - Stayability MPI - Maternal Productivity Index FMI - Feedlot Merit Index REA - Rib-Eye Area FAT - Back Fat MARB - Marbling Score


\*Active Sires: those sires that have sired at least 1 calf reported in the last 2 years \*\*Active Dams: those dams that have had a calf reported in the last 2 years

\*\*\*Calves are those animals born from 2011 to 2012 inclusive. These are the averages on the website.

**Return undeliverable Canadian addresses to:**

Circulation Department  
Canadian Hereford Digest  
5160 Skyline Way NE  
Calgary, AB T2E 6V1

Publication Mail Agreement No. 40006161

<b>CANADA</b>		<b>POSTES</b>
<b>POST</b>		<b>CANADA</b>
Postage paid		Port payé
<b>Addressed</b>		<b>Médiaposte</b>
<b>Admail</b>		<b>avec adresse</b>
1006834		