

2021

YV RANCH

BULL OFFERING



AIRDRIE, ALBERTA
WWW.YVRANCH.CA

YV RANCH

AIRDRIE, ALBERTA

WATCH FOR YV BULLS AT

◆ *Calgary Bull Sale ~ March 3 - 4* ◆
◆ *Medicine Hat Bull Sale ~ March 16 - 17* ◆

Welcome,

It is our pleasure to invite you to view our 2021 bull sale offering. As always, we are most proud of the cow behind every bull, the selection pressure on these cows has been immense. We believe that every bull sold should be out of a cow that we would use a bull out of ourselves. This year we have learned that there continues to be a need for improved efficiency and better management within our beef cattle operations. Our goal is to work with commercial cattlemen to produce bulls that fit into any crossbreeding operation by adding efficiency, longevity and maternal strength, along with a push towards stronger performance and carcass metrics. The foundation and principles of our purebred herd continue to strengthen our own commercial herd and we believe our genetics will enhance other commercial herds as well. Thank you to our friends and customers for supporting us and allowing us to continue doing what we love. Every bull is semen tested and 100% guaranteed on feet, legs and to breed. We can deliver bulls across Western Canada or to the closest port of entry to the US. Reach out to any of us at any time if you have any questions.

~ The Nixdorff's, Nels & Terri, Hal, Nicky, Adam and Coleman



CONTACTS

Hal (403)852-9234
Nels (403)510-2771 Adam (587)580-8310
Terri (403)808-2771 Coleman (403)990-1254

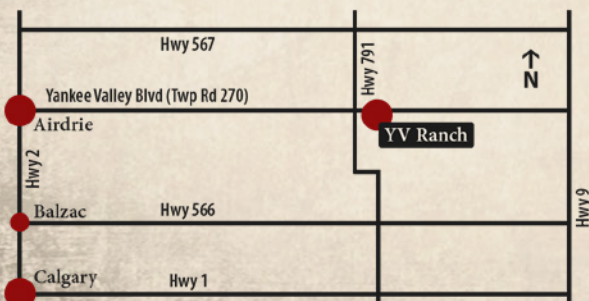
EMAIL

nelsnix@gmail.com
terrinnixdorff@gmail.com

ADDRESS

280201 TWP RD 270
Rocky View County, AB T4A 2T2

WWW.YVRANCH.CA





STRUCTURAL SOUNDNESS All cattle are run on large summer and winter pastures, pushing the need for overall structural soundness.

FERTILITY All heifers follow a timed AI protocol at 55% of their mature body weight forcing only the most fertile to cycle, followed by a short exposure to bulls for no more than 45 days. This allows for animals with lower fertility to be culled from the program at a young age. Cows are limited to a 63-day exposure window.

LONGEVITY The longevity of a commercial cow herd is directly related to the operation's profit. Our data collection process allows us to critically examine the overall differences in longevity among our genetic lines and allows us to make strict culling decisions.

MATERNAL TRAITS Every female is given a score for udder structure and for teat size directly after calving, this allows us to eliminate females with poor quality udders. It also allows us to identify bulls that offer maternal traits. Before a sire is used in the herd, the dam and paternal grand dam are evaluated to ensure that their udders are of the highest quality. We have been collecting udder scores on all of our females in both our purebred and commercial herds for 18 years, this has allowed us to make strict and objective culling decisions.

DOABILITY Cows should not only survive in harsh environments but they should be able to thrive. From weaning to calving, our purebred cow herd is co-mingled with our large commercial cow herd. While together, they spend the winter extensively grazing crop residues, followed by swath grazing in the spring, before calving on large stubble fields.

YV GENETIC SELECTION

CARCASS CHARACTERISTICS

FEED EFFICIENCY PERFORMANCE

**MATERNAL TRAITS
DO-ABILITY
TEMPERAMENT**

**STRUCTURAL SOUNDNESS
FERTILITY
LONGEVITY**

TEMPERAMENT We are fortunate that the Hereford breed is naturally docile, however, any outlying nervous heifers or bulls are culled at weaning.

FEED EFFICIENCY this is one of the newest traits we have been selecting for. In order to maintain a profitable cow herd, input costs must be reduced. Feed is the largest component of a herd's input costs.

PERFORMANCE cows and calves are run in large contemporary groups from birth through weaning and maintained in the same groups until they are yearlings. This allows for direct comparison of performance while removing any influence of environmental factors. Cow weights are recorded on a yearly basis, allowing for selection of high growth animals while maintaining a moderate cow size.

CARCASS CHARACTERISTICS All sale bulls are ultrasounded for ribeye area, marbling and backfat. In addition to this we finish all of our cull bulls and heifers, as well as commercial steers and heifers, collecting their carcass data from the packer. We also collect carcass data from our bull buyers' calves.

CHANGING PERSPECTIVES ABOUT HEREFORD CATTLE

The foundation of any exceptional herd depends on longevity, structure, temperament and efficiency, all of which are qualities exhibited by the Hereford breed. These qualities are strongly upheld by YV Ranch's robust cow herd, which maintains the Hereford breed's authenticity while also applying a progressive outlook. The progressive approach has removed large-framed, clunky cows from the herd; only the moderate-framed, good-footed cows with very functional udders are kept. Strict culling practices ensure that only the most functional genetics are included in the breeding program.

Incorporate YV's modern Hereford genetics into your cow herd to enhance:

⇒ LONGEVITY ⇒ EFFICIENCY ⇒ DO-ABILITY

The thick-hided and rugged nature of Hereford cattle, give them an inherent ability to perform with little inputs – making them ideal additions to your cow herd. From vast native prairie pastures to rough mountain terrain, the Hereford cow can thrive under a wide array of challenging conditions. Year-after-year, this concept is proven by the cows at YV Ranch. Both the purebred and commercial cow herds readily adapt to open-prairie or mountainous grazing environments in the summer, and to extensive grazing of crop residues in the winter. The cows are bred to be resilient; they are faced with travelling long distances to water and tackling challenging terrain on a daily basis. Herefords exhibit resiliency and adaptability like no other breed, incorporating YV's Hereford genetics into your herd will guarantee to produce hardy and efficient females that will service your herd for many years to come.



OPTIMIZATION

16 years ago we purposefully and consciously transitioned our data collection platform, combining data from our purebred and commercial herds to understand the optimal use of our seedstock genetics. We have made careful and strategic breeding decisions focussed on optimization rather than maximization. We strive to continuously improve management and production practices to increase the value of our product, and reduce costs in all areas of our operation. We accomplish this through persistent data collection and data analysis - we allow the data to drive our herd and operation in a practical and meaningful direction.

At YV Ranch, data collection is one of our cornerstone principles. We believe that genetic improvements should be based on informed data-driven decisions.

HERDTRAX™
Cattle Record Management



Data is collected from all animals in all areas of the operation:

- ⇒ All data is used to select genetically superior animals, passing those genetics on to our customers.
- ⇒ Large groups of YV purebred and commercial cows are AI'd every year to YV bulls, producing large datasets.
- ⇒ Data is collected on YV and YV customer calves right through to slaughter.



YV... DRIVING FEED EFFICIENCY

We have tested our bulls for feed efficiency for 8 years, with 2 of those years being on-farm using our own GrowSafe feed intake system. By retaining multiple high efficiency sires in our program we have seen drastic improvements in the feed to gain of our cattle on feed, along with an increase in stocking densities of our cattle on summer pastures without any adverse effects to pasture quality or forage availability. Continuous selection for feed efficiency has moved some of our influential herd sires into the top 10% most efficient animals in GrowSafe's 250,000+ animal efficiency database.

Feed efficiency plays a central role in our breeding program, not only does it benefit

our own purebred and commercial herds, it also adds immense value to other breeding programs. The unique characteristics of feed efficiency, specifically residual feed intake (RFI), make it compatible with every breeding program.



Selection for RFI can reduce total herd feed consumption by 20%, without negatively affecting:

- ⇒ BODY SIZE AND GROWTH RATE
- ⇒ FERTILITY
- ⇒ CARCASS CHARACTERISTICS

WHAT IS RFI?

The difference between an animals' actual intake and expected intake for a given growth rate and weight. More efficient cattle have lower RFI values.

The RFI EPD's listed for the 2019 and 2020 born bulls were calculated by GrowSafe.

		
790 lbs	WEIGHT	776 lbs
2.73 lbs/day	ADG	2.71 lbs/day
21.1 lbs/day	EXPECTED FEED INTAKE	20.5 lbs/day
24.3 lbs/day	ACTUAL FEED INTAKE	17.5 lbs/day
+3.20 lbs/day	RFI	-3.00 lbs/day



REFERENCE SIRES



AGA 18Z ZOOM STAN CREDITOR 77C

ALNK 77C | C03012611 | APR 10, 2015 | HORNED

SIRE AGA 55C STANDARD 18Y
AGA 18Y ZOOM STANDARD 18Z
 AGA 21M MISS STANMORE 76S

DAM AGA 114L GENERAL WILEY 24W
AGA 24W MISS GEN WILEY 144Y
 AGA 70N MISS BRIT DOM 33U

SILVER STANDARD 55C
 MISS 46E BRITISHER AGA 22L
 AGA 20J STANMORE 21M
 AGA 101J MISS STANDARD 140P
 AGA 13G GENERAL 114L
 AGA 118L MISS STANDARD 2R
 AGA 79H BRIT DOM ET 70N
 AGA 97G MISS HOT SHOT 82J

CE	BW	WW	YW	MILK	TM	MCE	MPI	FMI	PWG	FAT	REA	MARB
0.7	4.6	39	59	22	41	-2.7	105	90	20	.004	-0.33	0.09

77C was purchased at the 2017 Ulrich Bull Sale where he was the high selling lot and our pick of the bulls. 77C

combines the best of a top old Canadian pedigree with modern performance and style. A great performance bull with huge testicles and perfect foot structure. The last couple of years he has been with large groups of females and has covered them with ease. 77C has been used heavily on foot, in our AI program as well as our embryo program. He is in the top 1% of all bulls tested for RFI in Canada & the U.S...Efficient is his second name.



INTERNATIONAL SEMEN AVAILABLE

BR 213B FORTY CREEK 234F

BR 234F | C03048035 | MAR 5, 2018 | HORNED

SIRE BR 4W STANMORE 58Y
BR 58Y STANDARD 213B
 BR 52U SILVER DOMINO 145Z

DAM BR 9279 EXTRA DEEP 15Z
BR 15Z LADY ET 153C
 DBHR 68J STANDARD 155S

DBHR 31R STANMORE 4W
 DBHR 74N CLASSIC LADY 57T
 DBHR 129S UNLIMITED 52U
 DBHR 134P SILVER DOMINO 56S
 ECR L18 EXTRA DEEP 9279
 DBHR 42R SILVER 102T
 CC 122E EXCURSION 68J
 DBHR 124J STANDARD 144M

CE	BW	WW	YW	MILK	TM	MCE	MPI	FMI	PWG	FAT	REA	MARB
-1.9	5.7	58	98	20	49	0	120	108	40	.014	0.13	-0.04

Co-owned with Braun Ranches, this is the kind of bull all cattlemen need to be using, no matter what breed of

cattle you own. This bull is moderate, long and thick. Tons of pigment, deep eye set, lots of hair, and out of a long line of high producing perfect uddered cows.



BR 028X "THE DUKE" ET 101D

BR 101D | C03025254 | JAN 22, 2016 | HORNED

SIRE UPS DOMINO 3027
CHURCHILL SENSATION 028X
 CHURCHILL LADY 7202ET

DAM CC 122E EXCURSION 68J
DBHR 68J STANDARD 155S
 DBHR 124J STANDARD 144M

CL 1 DOMINO 9126J 1ET
 UPS MISS DIAMOND 1353
 GH RAMBO 279R
 CL 1 DOMINETTE 301N
 CH 82B EXPLORER 122E
 CC 40T JILLIAN 58Y
 AGA 656U STANDARD ET 124J
 JLR STANDARD LADY 113C

CE	BW	WW	YW	MILK	TM	MCE	MPI	FMI	PWG	FAT	REA	MARB
11.2	-1.1	41	72	38	59	9.6	191	170	31	.044	0.13	0.30

Purchased at Braun's 2017 sale, we chose this bull for his 78lb birth weight as well as his cow's top udder quality.

On top of that he is extremely thick and easy doing. So far, his calves have averaged an 81lb birth weight out of heifers and mature cows. His calves are early gestation.

REFERENCE SIREs

YV 915W DESIGNER ET 39D

YV 39D | C03022447 | FEB 17, 2016 | HORNED

SIRE SNS 109L SILVER STONE 81N
YV STAR STRUCK 915W
 AGA 72M MISS SUNSHINE LAD 282P

DAM SNS 40L RED SILVER 82R
YV 82R SILVER GAL 920W
 SNS 24K SKY POWER GAL 90M

K 64H RIBSTONE LAD 109L
 SNS 67F SILVER SKY LADY 107H
 XTC 38J SUNSHINE LAD 72M
 AGA 191G MISS STANDARD ET 147L
 AGA 22B RED STANMORE 40L
 SNS 67F SILVER SKY LADY 107H
 PYRAMID POWER 27D 24K
 SNS 67F SKY PRINCESS 134J



A sire raised from our embryo program out of YV 920W, a top SNS 82R daughter by YV Starstruck 915W.

CE	BW	WW	YW	MILK	TM	MCE	MPI	FMI	PWG	FAT	REA	MARB
-0.7	5.4	45	67	15	38	-2.2	112	55	22	.054	-0.22	0.00

We used this bull as a yearling walking sire and then continued to use him in our AI program. He adds growth, pigment and is sure to produce great quality udders. 39D was our high selling bull at Calgary Bull Sale in 2018 sold to Nelson Hirsche Purebreds.

YV 7C LIGHT CARGO 13F

YV 13F | C03049569 | FEB 14, 2018 | HORNED

SIRE AGA 60W BANNER SPORT ZEAL 28Z
AGA 28Z CARGO SPORT 7C
 AGA 2U MISS BRITISHER 210Z

DAM YV 30U MR STAN SUNSHINE ET 31A
YV 31A SUNNY LASS 27D
 YV 15Z MS ZAM 30B

BANNERLANE 232 EXTRA GEN 60W
 AGA 705 MISS EASYGOING 905W
 AGA 46E BRITISHER ET 2U
 AGA 656 MISS STANDARD 15M
 LBH 268P STANDARD 30U
 AGA 72M MISS SUNSHINE LAD 282P
 YV 35X ZAM 15Z
 YV 82R PRAIRIE LASS 904W



CE	BW	WW	YW	MILK	TM	MCE	MPI	FMI	PWG	FAT	REA	MARB
9.9	-0.3	41.3	64.3	19.1	39.8	3.6	161.5	110.3	23	.024	.10	.23

YV 13F was used heavily, his Dam 27D is quickly rising to be a foundation dam, with multiple sires in use in our herd. 13F progeny are very easy calving, almost all of his sons will work great on heifers.

AGA 28Z CARGO SPORT 7C

ALNK 7C | C03012604 | MAR 22, 2015 | HORNED

SIRE BANNERLANE 232 EXTRA GEN 60W
AGA 60W BANNER SPORT ZEAL 28Z
 AGA 705 MISS EASYGOING 905W

DAM AGA 46E BRITISHER ET 2U
AGA 2U MISS BRITISHER 210Z
 AGA 656 MISS STANDARD 15M

BBSF 6P SPORT 232S
 BANNERLANE GENSTAR LASS 27R
 CTY EASY 705T
 AGA 114L MISS STAR GENERAL 47S
 DP BRITISHER AGA 46E
 AGA 22B MISS BRIGADER 511E
 STANDRD LAD 656 4ET
 AGA 335C MISS EXTRA 8G



CE	BW	WW	YW	MILK	TM	MCE	MPI	FMI	PWG	FAT	REA	MARB
8.9	1.6	37	52	16	35	-1.4	133	87	15	-.016	0.22	0.12

7C was purchased at the 2017 Ulrich Bull Sale for a light birth weight heifer bull and has a 78lb birth weight. He is siring stout, solid marked offspring. We lost him after his first breeding but have continued using semen on him and have retained a son, YV 13F.

REFERENCE SIREs



YV 30U MR STAN SUNSHINE ET 31A

YV 31A | C02995445 | FEB 12, 2013 | HORNED

SIRE	LBH 73L STANDARD 268P	AGA 191G STANDARD ET 73L
	LBH 268P STANDARD 30U	LBH 22B MISS RED DOMINO 102M
DAM	LBH 20J MISS STANMORE 92S	AGA 121G STANMORE 20J
	XTC 38J SUNSHINE LAD 72M	AGA 277D MISS STANDARD 803H
	AGA 72M MISS SUNSHINE LAD 282P	CH 82B EXPLORER 122E
	AGA 191G MISS STANDARD ET 147L	CC 40T JILLIAN 58Y
		AGA 277D STANDARD 191G
		AGA MISS 80S VOLTAGE ET 14X

CE	BW	WW	YW	MILK	TM	MCE	MPI	FMI	PWG	FAT	REA	MARB
5.7	2.4	48	77	18	42	5.3	151	88	29	.084	0.00	0.19

YV 31A is another embryo calf that goes back to AGA 282P, a cow that is at the base of our herd, producing strong cows

and bulls with a lot of power and performance. On his top side he is out of our Lilybrook bull 30U that lowered birth weights and produced moderate bulls. YV 31A is extremely easy doing with alot of rib shape and very moderate birth weight. He is a trait leader in calving ease, maternal calving ease and marbling. Daryl Anderson purchased him off the ranch as a coming 2 year old and we have retained semen interest. YV 31A is also in the top 3% for feed efficiency of all bulls tested in the world.



YV 77C CREDITOR 4F

YV 4F | C03048705 | FEB 6, 2018 | HORNED

SIRE	AGA 18Y ZOOM STANDARD 18Z	AGA 55C STANDARD 18Y
	AGA 18Z ZOOM STAN CREDITOR 77C	AGA 21M MISS STANMORE 76S
DAM	AGA 24W MISS GEN WILEY 144Y	AGA 114L GENERAL WILEY 24W
	LBH 268P STANDARD 30U	AGA 70N MISS BRIT DOM 33U
	YV 30U MS MAMA 44B	LBH 73L STANDARD 268P
	YV 915W STARY MAMA 63Z	LBH 20J MISS STANMORE 92S
		YV STAR STRUCK 915W
		YV 114M POWER MAMA 766T

CE	BW	WW	YW	MILK	TM	MCE	MPI	FMI	PWG	FAT	REA	MARB
9.3	0.6	44	66	15	37	2.7	119	137	23	.004	-.21	0.31

4F is a combination of a tremendous mother cow with light birth weight bred deep into her pedigree. YV 4F has great maternal influence and has tested very efficiently on the RFI trials.



NJW 73S W18 HOMEGROWN 8Y ET

73S 8Y | C02987563 | FEB 1, 2011 | POLLED

SIRE	KCF BENNETT 3008 M326	RRH MR FELT 3008
	SHF WONDER M326 W18 ET	KCF MISS 459 F284
DAM	SHF GOVERNESS 236G L37	MM RSM STOCKMASTER 51Z
	PW VICTOR BOOMER P606	SHF INTERSTATE D03 G80
	NJW P606 72N DAYDREAM 73S	REMITALL BOOMER 46B
	NJW 94J DEW 72N	PW VICTORIA 964 8114
		RU 20X BOULDER 57G
		NJW D32 CLAIRE 94J

CE	BW	WW	YW	MILK	TM	MCE	MPI	FMI	PWG	FAT	REA	MARB
6.2	2.7	57	98	48	76	3.2	172	148	41	.034	0.59	0.03

Used as a homozygous polled AI sire, we chose to use 8Y for his consistency in type and overall thickness. We bred him to some of our bigger framed cows and used him in our embryo program as an outcross and found he compliments the herd well. 8Y is a 8 time trait leader.

REFERENCE SIRES

YV 35X ZAM 15Z

YV 15Z | C02969107 | FEB 17, 2012 | HORNED

SIRE
YV 82R POWER SOURCE 710T
YV 710T SUN POWER LAD 35X
AGA 72M MISS SUNSHINE LAD 282P

DAM
SNS 109L SILVER STONE 81N
YV 81N SILVER SKY LASS 7X
SNS 24K SKY BRIT LADY 93M

SNS 40L RED SILVER 82R
SNS 24K BRITISH LADY 120M
XTC 38J SUNSHINE LAD 72M
AGA 191G MISS STANDARD ET 147L
K 64H RIBSTONE LAD 109L
SNS 67F SILVER SKY LADY 107H
PYRAMID POWER 27D 24K
SNS 67F BIG SKY LADY 108H



INTERNATIONAL SEMEN AVAILABLE

Zam has been used in our herd for many years and we have a large number of daughters in production. Zam has worked great as a calving ease bull with added performance. He has some of our cornerstone cows on both the top and bottom side of his pedigree and is a trait leader in calving ease and marbling. He is solid marked, has great feet and has performed above average. Half interest was purchased on Zam as a yearling by Little Fort Herefords.

EXPECTED PROGENY DIFFERENCE

CE	BW	WW	YW	MILK	TM	MCE	MPI	FMI	RFI	PWG	FAT	REA	MARB
9.5	1.8	55	77	20	48	3.9	137	77	93	22.3	.104	0.05	0.19

GOLDEN-OAK 4J MAXIUM 28M

GORX 28M | C02816155 | MAR 2, 2002 | POLLED

SIRE
SQUARE-D EXPLOSION 909E
EAGLE-RIDGE BLASTER ET 4J
KILMORLIE 75A BIRDY 746D

DAM
RU 20X BOULDER 57G
TA-BAR CHANTELLE 15K
TA-BAR CHANTELLE ET 15F

GK GENETIC CAPTAIN
SQUARE-D SUSIE 709Z
WTK 55Y BOND 75A
KILMORLIE 163Y BIRDY 164A
REMITALL KEYNOTE 20X
RU 10A DEW 57D
BIG T 75A MERIDIAN D61
EMERALD CHANTILLY 116M 611X



EXPECTED PROGENY DIFFERENCE

CE	BW	WW	YW	MILK	TM	MCE	MPI	FMI	RFI	PWG	FAT	REA	MARB
-3.6	5.1	50	79	18	43	0.0	118	97	97	29	.024	0.47	-0.01

28M is a proven sire within the breed as a maternal bull, producing females with exceptional udder structure and teat size. 28M is a trait leader in udder suspension, teat size and REA. 28M's calves are easy doing with plenty of shape.

MCCOY 58G JACKPOT ET 105X

ZTM 105X | C02943921 | MAR 16, 2010 | POLLED

SIRE
REMITALL KEYNOTE 20X
RU 20X GALAXY 58G
RU 10A ELM 57E

DAM
DUSTY-DEE P183 DUALLY 36A
MCCOY 36A SUSIE 75F
SQUARE-D SUSIE 662Y

REMITALL TEAMSTER 9T
REMITALL PATRICIA 99P
REMITALL ACME 10A
RU 40L BUTTERCUP 57Z
JR NICK THE BUTLER P183
DUSTY-DEE 302R DESTINY 8Y
RLOA ULTIMO ET 74U
HAROLDSON'S STUCK-UP LADY 26P



EXPECTED PROGENY DIFFERENCE

CE	BW	WW	YW	MILK	TM	MCE	MPI	FMI	RFI	PWG	FAT	REA	MARB
-1.9	4.2	60	106	17	48	-3.4	145	103	84	46	.144	0.04	-0.05

Another proven bull, Jackpot was selected to help create strong females as well as a strong EPD suite, leading numerous traits including yearling weight, sustained cow fertility and MPI. 105X leaves his calves with thick curly hair, consistent with our horned cattle.



CALVING EASE

YV 5G



YV 22F - SISTER OF 5G

5G

YV 101D THE DUKE 5G

YV 5G | C03066435 | FEB 3, 2019 | HORNED

SIRE

CHURCHILL SENSATION 028X
BR 028X SENSATION ET 101D
DBHR 68J STANDARD 155S

DAM

YV 35X ZAM 15Z
YV 15Z MS SKY ZAM ET 21E
YV 915W SKY LASS 55Y

INDIVIDUAL PERFORMANCE

BW	205D	365D	DEC2	RFI	F:G
85	779	1336	1919	0.11	5.61

INDEX 120 116

INDIVIDUAL CARCASS DATA

RIBFAT	REA	%IMF	%LMY
0.28	0.88	1.57	60.90

INDIVIDUAL INFORMATION

AGE OF DAM	3
PIGMENT LEFT EYE	80
PIGMENT RIGHT EYE	100

EXPECTED PROGENY DIFFERENCE

CE	BW	WW	YW	MILK
0.1	3.0	60.7	100.7	33

16G

YV 101D THE DUKE 16G

YV 16G | C03069375 | FEB 8, 2019 | HORNED

SIRE

CHURCHILL SENSATION 028X
BR 028X SENSATION ET 101D
DBHR 68J STANDARD 155S

DAM

YV 15Z STAN SKY LAD 78B
YV 78B MS DOUBLE ZAM 60E
YV 15Z PRAIRIE ZAM LASS 55C

INDIVIDUAL PERFORMANCE

BW	205D	365D	DEC2	RFI	F:G
77	590	1085	1792	0.24	6.15

INDEX 91 94

INDIVIDUAL CARCASS DATA

RIBFAT	REA	%IMF	%LMY
0.17	1.20	1.58	64.70

INDIVIDUAL INFORMATION

AGE OF DAM	3
PIGMENT LEFT EYE	100
PIGMENT RIGHT EYE	100

EXPECTED PROGENY DIFFERENCE

CE	BW	WW	YW	MILK
10.2	0.6	42	70.6	26

2019 BORN BULLS



CALVING EASE

YV 16G



BR 155S - GRAND DAM OF 16G



CALVING EASE

YV 19G



YV 80F - SISTER OF 19G

19G

YV 7C MR CARGO 19G

YV 19G | C 03069376 | FEB 9, 2019 | HORNED

SIRE AGA 60W BANNER SPORT ZEAL 28Z
AGA 28Z CARGO SPORT 7C
AGA 2U MISS BRITISHER 210Z

DAM YV 35X ZAM 15Z
YV 15Z SNOOKIE GIRL 6E
YV 148X MS SNOOKIE 17C

INDIVIDUAL PERFORMANCE

BW	205D	365D	DEC2	RFI	F:G
78	662	1103	1705	0.02	6.78

INDEX 102 96

INDIVIDUAL CARCASS DATA

RIBFAT	REA	%IMF	%LMY
0.29	0.98	2.32	60.20

INDIVIDUAL INFORMATION

AGE OF DAM	3
PIGMENT LEFT EYE	0
PIGMENT RIGHT EYE	20

EXPECTED PROGENY DIFFERENCE

CE	BW	WW	YW	MILK
9.2	1.5	45.6	62.7	16.1

21G

YV 15Z MR ZAM STAR 21G

YV 21G | C 03069378 | FEB 9, 2019 | HORNED

SIRE YV 710T SUN POWER LAD 35X
YV 35X ZAM 15Z
YV 81N SILVER SKY LASS 7X

DAM YV 30U MR STAN SUNSHINE ET 31A
YV 31A MS SUNNY STAR 73E
YV 915W STAR PRINCESS 69Y

INDIVIDUAL PERFORMANCE

BW	205D	365D	DEC2	RFI	F:G
81	670	1086	1699	-0.11	6.82

INDEX 103 94

INDIVIDUAL CARCASS DATA

RIBFAT	REA	%IMF	%LMY
0.29	0.90	2.21	59.40

INDIVIDUAL INFORMATION

AGE OF DAM	3
PIGMENT LEFT EYE	100
PIGMENT RIGHT EYE	100

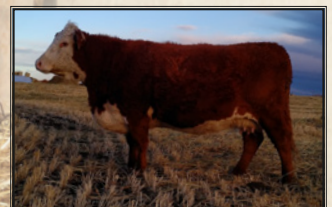
EXPECTED PROGENY DIFFERENCE

CE	BW	WW	YW	MILK
5.2	3.2	53.3	74.9	19.2



CALVING EASE

YV 21G



YV 7X | GRAND DAM OF 21G



YV 19C | DAM OF 29G



YV 29G

29G

YV 77C CREDITOR 29G

YV 29G | C03061430 | FEB 11, 2019 | HORNED

SIRE AGA 18Y ZOOM STANDARD 18Z
AGA 18Z ZOOM STAN CREDITOR 77C
AGA 24W MISS GEN WILEY 144Y

DAM YV 35X ZAM 15Z
YV 15Z MS ZAM STRUCK 19C
YV 915W SILVER STRUCK LADY 27Z

INDIVIDUAL PERFORMANCE

BW	205D	365D	DEC2	RFI	F:G
95	705	1049	1825	-0.37	6.56

INDEX 108 91

INDIVIDUAL CARCASS DATA

RIBFAT	REA	%IMF	%LMY
0.10	0.87	1.41	63.90

INDIVIDUAL INFORMATION

AGE OF DAM	5
PIGMENT LEFT EYE	100
PIGMENT RIGHT EYE	100

EXPECTED PROGENY DIFFERENCE

CE	BW	WW	YW	MILK
-1.8	5.2	52.4	66.8	20

31G

YV 15Z SILVER ZAM 31G

YV 31G | C03061432 | FEB 11, 2019 | HORNED

SIRE YV 710T SUN POWER LAD 35X
YV 35X ZAM 15Z
YV 81N SILVER SKY LASS 7X

DAM YV STAR STRUCK 915W
YV 915W MS SILVER STAR 95E
YV 30U MS SILVER LASS 25Y

INDIVIDUAL PERFORMANCE

BW	205D	365D	DEC2	RFI	F:G
80	669	1075	1875	0.11	7.10

INDEX 103 93

INDIVIDUAL CARCASS DATA

RIBFAT	REA	%IMF	%LMY
0.18	0.96	1.38	62.40

INDIVIDUAL INFORMATION

AGE OF DAM	3
PIGMENT LEFT EYE	100
PIGMENT RIGHT EYE	100

EXPECTED PROGENY DIFFERENCE

CE	BW	WW	YW	MILK
4.3	4.0	57	77	16



YV 95E | DAM OF 31G



CALVING EASE

YV 31G



CALVING EASE

YV 38G



YV 8E | DAM OF 38G

38G

YV 15Z MR ZAM STRUCK 38G

YV 38G | C03061442 | FEB 13, 2019 | HORNED

SIRE YV 710T SUN POWER LAD 35X
YV 35X ZAM 15Z
YV 81N SILVER SKY LASS 7X

DAM YV 30U MR STAN SUNSHINE ET 31A
YV 31A MS SUN STRUCK 8E
YV 15Z MS ZAM STRUCK 19C

INDIVIDUAL PERFORMANCE

BW	205D	365D	DEC2	RFI	F:G
77	603	988	1570	0.26	8.31

INDEX 93 86

INDIVIDUAL CARCASS DATA

RIBFAT	REA	%IMF	%LMY
0.26	1.03	1.65	60.40

INDIVIDUAL INFORMATION

AGE OF DAM	3
PIGMENT LEFT EYE	100
PIGMENT RIGHT EYE	100

EXPECTED PROGENY DIFFERENCE

CE	BW	WW	YW	MILK
8.5	1.2	47	62	19

39G

YV 7C ADMIRAL CARGO 39G

YV 39G | C03061443 | FEB 13, 2019 | HORNED

SIRE AGA 60W BANNER SPORT ZEAL 28Z
AGA 28Z CARGO SPORT 7C
AGA 2U MISS BRITISHER 210Z

DAM MAWARRA VICE ADMIRAL
YV MS ADMIRAL 76B
YV 82R SKY GEN LASS 45X

INDIVIDUAL PERFORMANCE

BW	205D	365D	DEC2	RFI	F:G
92	674	1105	1688	-0.07	6.20

INDEX 104 96

INDIVIDUAL CARCASS DATA

RIBFAT	REA	%IMF	%LMY
0.11	1.08	1.37	65.90

INDIVIDUAL INFORMATION

AGE OF DAM	6
PIGMENT LEFT EYE	60
PIGMENT RIGHT EYE	100

EXPECTED PROGENY DIFFERENCE

CE	BW	WW	YW	MILK
0.7	4.4	45	67	21



YV 39G



YV 80F | DAM OF SISTER OF 39G



YV 41G



YV 21D | DAM OF 41G

41G YV 8Y ZAMS HOMEGROWN 41G

YV 41G | C03061445 | FEB 13, 2019 | POLLED

SIRE SHF WONDER M326 W18 ET
 NJW 735 W18 HOMEGROWN 8Y ET
 NJW P606 72N DAYDREAM 73S

DAM YV 35X ZAM 15Z
 YV 15Z ZAMS LADY 21D
 YV 148X SILVER LADY 3A

INDIVIDUAL PERFORMANCE

BW	205D	365D	DEC2	RFI	F:G
95	603	1193	1941	-0.13	5.53

INDEX 93 103

INDIVIDUAL CARCASS DATA

RIBFAT	REA	%IMF	%LMY
0.33	1.08	1.93	61.00

INDIVIDUAL INFORMATION

AGE OF DAM	4
PIGMENT LEFT EYE	100
PIGMENT RIGHT EYE	100

EXPECTED PROGENY DIFFERENCE

CE	BW	WW	YW	MILK
1.5	4.2	54	94	32

46G YV 7C ZAMS CARGO 46G

YV 46G | C03061590 | FEB 15, 2019 | HORNED

SIRE AGA 60W BANNER SPORT ZEAL 28Z
 AGA 28Z CARGO SPORT 7C
 AGA 2U MISS BRITISHER 210Z

DAM YV 35X ZAM 15Z
 YV 15Z MS ZAM STRUCK ET 35E
 YV 915W SKY LASS 55Y

INDIVIDUAL PERFORMANCE

BW	205D	365D	DEC2	RFI	F:G
95	717	1230	1765	0.00	5.79

INDEX 110 107

INDIVIDUAL CARCASS DATA

RIBFAT	REA	%IMF	%LMY
0.27	0.91	1.92	60.90

INDIVIDUAL INFORMATION

AGE OF DAM	3
PIGMENT LEFT EYE	100
PIGMENT RIGHT EYE	100

EXPECTED PROGENY DIFFERENCE

CE	BW	WW	YW	MILK
0.1	5.5	58	89	21



YV 46G



YV 80F | SISTER OF 46G



YV 47G

YV 10B | DAM OF 47G

47G

YV 31A SUNNY STAR 47G

YV 47G | C03061591 | FEB 15, 2019 | HORNED

SIRE

LBH 268P STANDARD 30U
YV 30U MR STAN SUNSHINE ET 31A
 AGA 72M MISS SUNSHINE LAD 282P

DAM

LBH 268P STANDARD 30U
YV 30U MS STD STAR LASS 10B
 YV 915W SILVER LADY 40Z

INDIVIDUAL PERFORMANCE

BW	205D	365D	DEC2	RFI	F:G
99	648	1166	1743	-	-

INDEX 100 101

INDIVIDUAL CARCASS DATA

RIBFAT	REA	%IMF	%LMY
0.30	1.08	1.84	61.80

INDIVIDUAL INFORMATION

AGE OF DAM	6
PIGMENT LEFT EYE	100
PIGMENT RIGHT EYE	100

EXPECTED PROGENY DIFFERENCE

CE	BW	WW	YW	MILK
2.5	5.2	49	81	15

48G

YV 39D DESIGNER 48G

YV 48G | C03061592 | FEB 15, 2019 | HORNED

SIRE

YV STAR STRUCK 915W
YV 915W DESIGNER ET 39D
 YV 82R SILVER GAL 920W

DAM

YV 15Z SILVER STUD 38B
YV 38B MS SILVER STAR 94D
 YV 30U MS STD STAR LASS 10B

INDIVIDUAL PERFORMANCE

BW	205D	365D	DEC2	RFI	F:G
92	696	1145	1737	0.13	7.68

INDEX 107 99

INDIVIDUAL CARCASS DATA

RIBFAT	REA	%IMF	%LMY
0.29	0.85	2.30	59.70

INDIVIDUAL INFORMATION

AGE OF DAM	4
PIGMENT LEFT EYE	100
PIGMENT RIGHT EYE	100

EXPECTED PROGENY DIFFERENCE

CE	BW	WW	YW	MILK
1.4	5.0	49	72	16



YV 48G

YV 94D | DAM OF 48G



YV 904W | DAM OF 50G

YV 50G

50G

YV 8Y HOMEGROWN 50G

YV 50G | C03061596 | FEB 15, 2019 | POLLED

SIRE SHF WONDER M326 W18 ET
NJW 73S W18 HOMEGROWN 8Y ET
 NJW P606 72N DAYDREAM 73S

DAM SNS 40L RED SILVER 82R
YV 82R PRAIRIE LASS 904W
 SNS 12F PRAIRIE SKY LASS 58M

INDIVIDUAL PERFORMANCE

BW	205D	365D	DEC 2	RFI	F:G
95	600	1099	1765	-0.31	6.04

INDEX 92 95

INDIVIDUAL CARCASS DATA

RIBEAT	REA	%IMF	%LMY
0.27	1.11	1.77	62.20

INDIVIDUAL INFORMATION

AGE OF DAM	11
PIGMENT LEFT EYE	90
PIGMENT RIGHT EYE	50

EXPECTED PROGENY DIFFERENCE

CE	BW	WW	YW	MILK
0.7	4.1	42	70	32

51G

YV 8Y HOMEGROWN 51G

YV 51G | C03066538 | FEB 16, 2019 | POLLED

SIRE SHF WONDER M326 W18 ET
NJW 73S W18 HOMEGROWN 8Y ET
 NJW P606 72N DAYDREAM 73S

DAM YV 915W SILVER STRUCK LAD 37A
YV 37A MS SILVER STRUCK 46D
 YV 915W SILVER STRUCK LADY 27Z

INDIVIDUAL PERFORMANCE

BW	205D	365D	DEC 2	RFI	F:G
101	841	1257	2013	0.02	7.05

INDEX 129 109

INDIVIDUAL CARCASS DATA

RIBEAT	REA	%IMF	%LMY
0.21	0.88	1.44	62.60

INDIVIDUAL INFORMATION

AGE OF DAM	4
PIGMENT LEFT EYE	90
PIGMENT RIGHT EYE	100

EXPECTED PROGENY DIFFERENCE

CE	BW	WW	YW	MILK
-5.6	6.9	69	99	33



YV 46D | DAM OF 51G

YV 51G



YV 17D | DAM OF 52G

YV 52G

52G YV 77C CREDITOR 52G

YV 52G | C03061606 | FEB 16, 2019 | HORNED

SIRE AGA 18Y ZOOM STANDARD 18Z
AGA 18Z ZOOM STAN CREDITOR 77C
 AGA 24W MISS GEN WILEY 144Y

DAM YV 30U MR STAN SUNSHINE ET 31A
YV 31A MS SUNSHINE 17D
 YV 15Z MS ZAM 24B

INDIVIDUAL PERFORMANCE

BW	205D	365D	DEC2	RFI	F:G
99	724	1241	2096	-	-

INDEX 111 108

INDIVIDUAL CARCASS DATA

RIBFAT	REA	%IMF	%LMY
0.33	0.81	1.91	58.90

INDIVIDUAL INFORMATION

AGE OF DAM	4
PIGMENT LEFT EYE	100
PIGMENT RIGHT EYE	100

EXPECTED PROGENY DIFFERENCE

CE	BW	WW	YW	MILK
-0.7	5.4	50	80	22

59G YV 77C CREDITOR 59G

YV 59G | C03062019 | FEB 23, 2019 | HORNED

SIRE AGA 18Y ZOOM STANDARD 18Z
AGA 18Z ZOOM STAN CREDITOR 77C
 AGA 24W MISS GEN WILEY 144Y

DAM YV 35X ZAM 15Z
YV 15Z MS ZAM 30B
 YV 82R PRAIRIE LASS 904W

INDIVIDUAL PERFORMANCE

BW	205D	365D	DEC2	RFI	F:G
99	665	1002	1616	-0.44	8.92

INDEX 102 87

INDIVIDUAL CARCASS DATA

RIBFAT	REA	%IMF	%LMY
0.15	0.90	1.30	62.60

INDIVIDUAL INFORMATION

AGE OF DAM	6
PIGMENT LEFT EYE	100
PIGMENT RIGHT EYE	100

EXPECTED PROGENY DIFFERENCE

CE	BW	WW	YW	MILK
-0.3	4.5	45	58	21



YV 30B | DAM OF 59G

YV 59G



CALVING EASE

YV 60G



YV 30D | DAM OF 60G

60G **YV 77C CREDITOR 60G**

YV 60G | C03062020 | FEB 23, 2019 | HORNED

SIRE AGA 18Y ZOOM STANDARD 18Z
AGA 18Z ZOOM STAN CREDITOR 77C
 AGA 24W MISS GEN WILEY 144Y

DAM YV 35X ZAM 15Z
YV 15Z ZAMS GIRL 30D
 YV 30U MS MAMA 44B

INDIVIDUAL INFORMATION

AGE OF DAM	4
PIGMENT LEFT EYE	100
PIGMENT RIGHT EYE	100

INDIVIDUAL PERFORMANCE

BW	205D	365D	DEC 2	RFI	F:G
86	586	1071	1710	0.07	8.46

INDEX 90 93

INDIVIDUAL CARCASS DATA

RIBFAT	REA	%IMF	%LMY
0.21	0.91	1.55	61.50

EXPECTED PROGENY DIFFERENCE

CE	BW	WW	YW	MILK
6.7	1.9	37	55	19

62G **YV 8Y VALLEYGROWN ET 62G**

YV 62G | C03066539 | FEB 24, 2019 | POLLED

SIRE SHF WONDER M326 W18 ET
NJW 73S W18 HOMEGROWN 8Y ET
 NJW P606 72N DAYDREAM 73S

DAM YV 34W MAJOR MARK LAD 2Y
YV 2Y MS SUNSHINE ET 27B
 AGA 72M MISS SUNSHINE LAD 282P

INDIVIDUAL INFORMATION

AGE OF DAM	4
PIGMENT LEFT EYE	100
PIGMENT RIGHT EYE	100

INDIVIDUAL PERFORMANCE

BW	205D	365D	DEC 2	RFI	F:G
97	702	1296	2079	-0.07	6.28

INDEX 100 104

INDIVIDUAL CARCASS DATA

RIBFAT	REA	%IMF	%LMY
0.24	0.91	1.67	62.30

EXPECTED PROGENY DIFFERENCE

CE	BW	WW	YW	MILK
1.6	4.4	61	108	35



YV 62G



YV 6B | SISTER OF DAM OF 62G



YV 73G



YV 86B | DAM OF 73G

73G

YV 77C MR CREDITOR 73G

YV 73G | C03062253 | MAR 4, 2019 | HORNED

SIRE

AGA 18Y ZOOM STANDARD 18Z
AGA 18Z ZOOM STAN CREDITOR 77C
 AGA 24W MISS GEN WILEY 144Y

DAM

YV ALLIANCE ET 15Y
YV 15Y MS ALLIANCE 86B
 YV 915W MS SILVER STAR 80Y

INDIVIDUAL PERFORMANCE

BW	205D	365D	DEC2	RFI	F:G
98	680	1164	1908	-1.08	4.93

INDEX 105 101

INDIVIDUAL CARCASS DATA

RIBFAT	REA	%IMF	%LMY
0.28	0.89	1.98	60.40

INDIVIDUAL INFORMATION

AGE OF DAM	6
PIGMENT LEFT EYE	100
PIGMENT RIGHT EYE	100

EXPECTED PROGENY DIFFERENCE

CE	BW	WW	YW	MILK
-3.5	5.5	49	73	18

74G

YV 101D THE DUKE 74G

YV 74G | C03062254 | MAR 5, 2019 | HORNED

SIRE

CHURCHILL SENSATION 028X
BR 028X SENSATION ET 101D
 DBHR 68J STANDARD 155S

DAM

YV 30U MR STAN SUNSHINE ET 31A
YV 31A MS SUN DROP 103E
 YV 82R TEARDROP 974W

INDIVIDUAL PERFORMANCE

BW	205D	365D	DEC2	RFI	F:G
86	601	1129	1627	-0.13	7.05

INDEX 92 98

INDIVIDUAL CARCASS DATA

RIBFAT	REA	%IMF	%LMY
0.16	1.06	1.62	63.90

INDIVIDUAL INFORMATION

AGE OF DAM	3
PIGMENT LEFT EYE	80
PIGMENT RIGHT EYE	90

EXPECTED PROGENY DIFFERENCE

CE	BW	WW	YW	MILK
0.1	3.3	44	76	25



YV 74G



YV 103E | DAM OF 74G



YV 22F | SISTER TO 75G

CALVING EASE

YV 75G

75G

YV 101D THE DUKE 75G

YV 75G | C03062255 | MAR 5, 2019 | HORNED

SIRE CHURCHILL SENSATION 028X
BR 028X SENSATION ET 101D
DBHR 68J STANDARD 155S

DAM YV 35X ZAM 15Z
YV 15Z ZAMS GIRL 2E
YV 915W MS SILVER STRUCK 75C

INDIVIDUAL PERFORMANCE

BW	205D	365D	DEC2	RFI	F:G
83	642	1170	1688	0.09	4.83

INDEX 99 101

INDIVIDUAL CARCASS DATA

RIBFAT	REA	%IMF	%LMY
0.26	1.01	1.65	61.40

INDIVIDUAL INFORMATION

AGE OF DAM	3
PIGMENT LEFT EYE	100
PIGMENT RIGHT EYE	100

EXPECTED PROGENY DIFFERENCE

CE	BW	WW	YW	MILK
8.4	1.5	48	79	26

77G

YV 77C MR CREDITOR 77G

YV 77G | C03062257 | MAR 9, 2019 | HORNED

SIRE AGA 18Y ZOOM STANDARD 18Z
AGA 18Z ZOOM STAN CREDITOR 77C
AGA 24W MISS GEN WILEY 144Y

DAM YV 35X ZAM 15Z
YV 15Z ZAM LASS 68D
YV 82R SKY GEN LASS 45X

INDIVIDUAL PERFORMANCE

BW	205D	365D	DEC2	RFI	F:G
94	684	1134	1870	-0.90	5.15

INDEX 105 98

INDIVIDUAL CARCASS DATA

RIBFAT	REA	%IMF	%LMY
0.40	0.95	1.86	57.50

INDIVIDUAL INFORMATION

AGE OF DAM	4
PIGMENT LEFT EYE	90
PIGMENT RIGHT EYE	0

EXPECTED PROGENY DIFFERENCE

CE	BW	WW	YW	MILK
-0.7	5.5	47	70	20



YV 68D | DAM OF 77G

YV 77G



YV 79G



YV 46F | SISTER OF 79G

79G

YV 77C MR CREDITOR STRUCK 79G

YV 79G | C03062259 | MAR 25, 2019 | HORNED

INDIVIDUAL INFORMATION

AGE OF DAM	4
PIGMENT LEFT EYE	0
PIGMENT RIGHT EYE	90

SIRE

AGA 18Y ZOOM STANDARD 18Z
AGA 18Z ZOOM STAN CREDITOR 77C
 AGA 24W MISS GEN WILEY 144Y

DAM

YV 35X ZAM 15Z
YV 15Z MS ZAM STRUCK 33D
 YV 915W STAR SILVER LASS 94B

INDIVIDUAL PERFORMANCE

BW	205D	365D	DEC2	RFI	F:G
85	614	1063	1814	-0.49	5.47

INDEX 104 98

INDIVIDUAL CARCASS DATA

RIBFAT	REA	%LMF	%LMY
0.24	0.90	1.76	61.00

EXPECTED PROGENY DIFFERENCE

CE	BW	WW	YW	MILK
6.0	2.9	45	63	20

82G

YV 101D THE DUKE 82G

YV 82G | C03062262 | MAR 26, 2019 | HORNED

INDIVIDUAL INFORMATION

AGE OF DAM	5
PIGMENT LEFT EYE	100
PIGMENT RIGHT EYE	100

SIRE

CHURCHILL SENSATION 028X
BR 028X SENSATION ET 101D
 DBHR 68J STANDARD 155S

DAM

YV STAR STRUCK 915W
YV 915W MS SILVER STRUCK 75C
 YV 30U SILVER LASS 23X

INDIVIDUAL PERFORMANCE

BW	205D	365D	DEC2	RFI	F:G
80	538	1063	1699	-0.24	5.00

INDEX 91 98

INDIVIDUAL CARCASS DATA

RIBFAT	REA	%LMF	%LMY
0.39	0.96	2.08	57.90

EXPECTED PROGENY DIFFERENCE

CE	BW	WW	YW	MILK
8.7	1.2	43	71	24



CALVING EASE

YV 82G



BR 155S | GRAND DAM OF 82G



YV 33Y | DAM OF 86G

CALVING EASE

YV 86G

86G

YV 31A SILVER SUN 86G

YV 86G | C03062265 | MAR 29, 2019 | HORNED

SIRE LBH 268P STANDARD 30U
YV 30U MR STAN SUNSHINE ET 31A
AGA 72M MISS SUNSHINE LAD 282P

DAM YV STAR STRUCK 915W
YV 915W SILVER LASS 33Y
YV 82R SILVER STAN LASS 857U

INDIVIDUAL PERFORMANCE

BW	205D	365D	DEC2	RFI	F:G
80	562	1091	1688	-0.07	6.92

INDEX 95 100

INDIVIDUAL CARCASS DATA

RIBFAT	REA	%IMF	%LMY
0.48	0.92	1.88	55.70

INDIVIDUAL INFORMATION

AGE OF DAM	9
PIGMENT LEFT EYE	60
PIGMENT RIGHT EYE	100

EXPECTED PROGENY DIFFERENCE

CE	BW	WW	YW	MILK
7.3	2.9	49	75	16

96G

YV 31A SILVER SUNSHINE 96G

YV 96G | C03064551 | APR 5, 2019 | HORNED

SIRE LBH 268P STANDARD 30U
YV 30U MR STAN SUNSHINE ET 31A
AGA 72M MISS SUNSHINE LAD 282P

DAM SNS 40L RED SILVER 82R
YV 82R SILVER GAL 920W
SNS 24K SKY POWER GAL 90M

INDIVIDUAL PERFORMANCE

BW	205D	365D	DEC2	RFI	F:G
94	627	1120	1781	-0.40	6.62

INDEX 106 103

INDIVIDUAL CARCASS DATA

RIBFAT	REA	%IMF	%LMY
0.34	1.09	1.93	60.50

INDIVIDUAL INFORMATION

AGE OF DAM	11
PIGMENT LEFT EYE	0
PIGMENT RIGHT EYE	0

EXPECTED PROGENY DIFFERENCE

CE	BW	WW	YW	MILK
5.2	3.6	41	65	16



YV 920W | DAM OF 96G

YV 96G



YV 976W | DAM OF 97G

YV 97G

97G

YV 39D SILVER DESIGNER 97G

YV 97G | C03064552 | APR 4, 2019 | HORNED

SIRE

YV STAR STRUCK 915W
YV 915W DESIGNER ET 39D
 YV 82R SILVER GAL 920W

DAM

SNS 40L RED SILVER 82R
YV 82R SILVER LASS 976W
 YV 81N SILVER SKY LASS 635S

INDIVIDUAL PERFORMANCE

BW	205D	365D	NOV 14	RFI	F:G
99	680	1059	1590	-	-

INDEX 115 97

INDIVIDUAL CARCASS DATA

RIBFAT	REA	%IMF	%LMY
0.19	0.96	1.29	62.70

INDIVIDUAL INFORMATION

AGE OF DAM	11
PIGMENT LEFT EYE	100
PIGMENT RIGHT EYE	100

EXPECTED PROGENY DIFFERENCE

CE	BW	WW	YW	MILK
-2.5	6.5	47	60	13

98G

YV 39D DESIGNER 98G

YV 98G | C03064553 | APR 5, 2019 | HORNED

SIRE

YV STAR STRUCK 915W
YV 915W DESIGNER ET 39D
 YV 82R SILVER GAL 920W

DAM

YV 34W MAJOR MARK LAD 2Y
YV 2Y MS SUNSHINE ET 27B
 AGA 72M MISS SUNSHINE LAD 282P

INDIVIDUAL PERFORMANCE

BW	205D	365D	NOV 14	RFI	F:G
101	613	1123	1655	0.07	6.98

INDEX 104 103

INDIVIDUAL CARCASS DATA

RIBFAT	REA	%IMF	%LMY
0.36	1.00	2.15	59.40

INDIVIDUAL INFORMATION

AGE OF DAM	6
PIGMENT LEFT EYE	100
PIGMENT RIGHT EYE	100

EXPECTED PROGENY DIFFERENCE

CE	BW	WW	YW	MILK
-4.3	5.9	51	83	15



YV 7B | SISTER OF DAM OF 98G

YV 98G



YV 101G



YV 35C | DAM OF 101G

101G

YV 39D DISIGNER 101G

YV 101G | C03064556 | APR 6, 2019 | HORNED

SIRE

YV STAR STRUCK 915W
YV 915W DESIGNER ET 39D
 YV 82R SILVER GAL 920W

DAM

SNS 838S MARK LAD 34W
YV 34W SUNSHINE GIRL 35C
 YV 30U MISS SUNSHINE ET 13A

INDIVIDUAL PERFORMANCE

BW	205D	365D	DEC2	RFI	F:G
98	652	1093	1792	0.07	6.98

INDEX 111 101

INDIVIDUAL CARCASS DATA

RIBFAT	REA	%IMF	%LMY
0.31	1.09	1.46	60.90

INDIVIDUAL INFORMATION

AGE OF DAM	5
PIGMENT LEFT EYE	80
PIGMENT RIGHT EYE	100

EXPECTED PROGENY DIFFERENCE

CE	BW	WW	YW	MILK
-1.6	6.4	49	73	17

109G

YV 7C MR CARGO 109G

YV 109G | C03064781 | APR 8, 2019 | HORNED

SIRE

AGA 60W BANNER SPORT ZEAL 28Z
AGA 28Z CARGO SPORT 7C
 AGA 2U MISS BRITISHER 210Z

DAM

YV STAR STRUCK 915W
YV 915W SKY LASS 55Y
 YV BO SKY LASS 806U

INDIVIDUAL PERFORMANCE

BW	205D	365D	DEC2	RFI	F:G
92	599	1125	1748	0.04	6.68

INDEX 102 103

INDIVIDUAL CARCASS DATA

RIBFAT	REA	%IMF	%LMY
0.26	1.09	2.05	62.70

INDIVIDUAL INFORMATION

AGE OF DAM	9
PIGMENT LEFT EYE	100
PIGMENT RIGHT EYE	100

EXPECTED PROGENY DIFFERENCE

CE	BW	WW	YW	MILK
-0.7	4.2	51.3	83	22



YV 109G



YV 55Y | DAM OF 109G



YV 113G



YV 80F | SISTER OF 113G

113G YV 7C CARGO STRUCK 113G

YV 113G | C03064784 | APR 10, 2019 | HORNED

SIRE AGA 60W BANNER SPORT ZEAL 28Z
AGA 28Z CARGO SPORT 7C
AGA 2U MISS BRITISHER 210Z

DAM YV STAR STRUCK 915W
YV 915W SILVER PRINCESS 53Z
YV 82R SILVER PRINCESS 954W

INDIVIDUAL PERFORMANCE

BW	205D	365D	DEC2	RFI	F:G
90	573	1054	1655	0.26	7.34

INDEX 97 97

INDIVIDUAL CARCASS DATA

RIBFAT	REA	%LMF	%LMY
0.34	1.06	1.89	59.80

INDIVIDUAL INFORMATION

AGE OF DAM	8
PIGMENT LEFT EYE	30
PIGMENT RIGHT EYE	50

EXPECTED PROGENY DIFFERENCE

CE	BW	WW	YW	MILK
2.4	4.0	46	66	13

122G YV 31A SUPER NOVA 122G

YV 122G | C03064792 | APR 16, 2019 | HORNED

SIRE LBH 268P STANDARD 30U
YV 30U MR STAN SUNSHINE ET 31A
AGA 72M MISS SUNSHINE LAD 282P

DAM YV STAR STRUCK 915W
YV 915W MS SUPER NOVA 74A
YV 232N RED VAL 613S

INDIVIDUAL PERFORMANCE

BW	205D	365D	DEC2	RFI	F:G
91	644	1089	1798	-0.73	5.30

INDEX 109 100

INDIVIDUAL CARCASS DATA

RIBFAT	REA	%LMF	%LMY
0.29	1.07	1.67	61.30

INDIVIDUAL INFORMATION

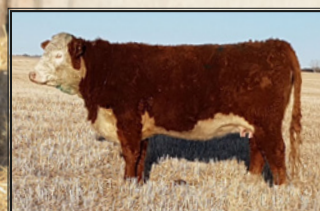
AGE OF DAM	7
PIGMENT LEFT EYE	100
PIGMENT RIGHT EYE	100

EXPECTED PROGENY DIFFERENCE

CE	BW	WW	YW	MILK
1.4	4.5	56	87	17



YV 122G



YV 74A | DAM OF 122G



YV 125G



YV 79B | DAM OF 125G

125G YV 105X JACKPOT 125G

YV 125G | C03064794 | APR 18, 2019 | POLLED

SIRE
RU 20X GALAXY 58G
MCCOY 58G JACKPOT ET 105X
MCCOY 36A SUSIE 75F

DAM
SNS 838S MARK LAD 34W
YV 34W STAN SKY LAD 79B
YV 915W SILVER PRINCESS 53Z

INDIVIDUAL PERFORMANCE

BW	205D	365D	DEC 2	RFI	F:G
99	606	1112	1754	0.26	6.53

INDEX 103 102

INDIVIDUAL CARCASS DATA

RIBFAT	REA	%IMF	%LMY
0.26	1.08	1.53	62.20

INDIVIDUAL INFORMATION

AGE OF DAM	6
PIGMENT LEFT EYE	100
PIGMENT RIGHT EYE	100

EXPECTED PROGENY DIFFERENCE

CE	BW	WW	YW	MILK
-3.8	6.0	56	94	15

126G YV 77C STAR PRINCE 126G

YV 126G | C03069671 | APR 18, 2019 | HORNED

SIRE
AGA 18Y ZOOM STANDARD 18Z
AGA 18Z ZOOM STAN CREDITOR 77C
AGA 24W MISS GEN WILEY 144Y

DAM
YV STAR STRUCK 915W
YV 915W STAR PRINCESS 69Y
SNS 75K SKY PRINCESS 40M

INDIVIDUAL PERFORMANCE

BW	205D	365D	DEC 20	RFI	F:G
82	567	920	1688	-0.04	9.29

INDEX - -

INDIVIDUAL CARCASS DATA

RIBFAT	REA	%IMF	%LMY
0.15	1.09	1.52	63.50

INDIVIDUAL INFORMATION

AGE OF DAM	9
PIGMENT LEFT EYE	70
PIGMENT RIGHT EYE	90

EXPECTED PROGENY DIFFERENCE

CE	BW	WW	YW	MILK
-2.9	6.3	49	74	19



YV 126G



YV 46F | SISTER OF 126G



YV 127G



YV 23C | DAM OF 127G

127G YV 77C CREDITOR 127G

YV 127G | C03065053 | APR 20, 2019 | HORNED

SIRE AGA 18Y ZOOM STANDARD 18Z
AGA 18Z ZOOM STAN CREDITOR 77C
AGA 24W MISS GEN WILEY 144Y

DAM YV 30U MR STAN SUNSHINE ET 31A
YV 31A GIRL CRUSH 23C
YV 81N SILVER SKY LASS 7X

INDIVIDUAL PERFORMANCE

BW	205D	365D	DEC 20	RFI	F:G
89	601	1055	1776	-0.46	5.73

INDEX 102 97

INDIVIDUAL CARCASS DATA

RIBFAT	REA	%IMF	%LMY
0.30	1.01	2.07	60.20

INDIVIDUAL INFORMATION

AGE OF DAM	5
PIGMENT LEFT EYE	100
PIGMENT RIGHT EYE	100

EXPECTED PROGENY DIFFERENCE

CE	BW	WW	YW	MILK
7.2	2.2	42	61	21

128G YV 31A MR SUNSHINE 128G

YV 128G | C03065054 | APR 20, 2019 | HORNED

SIRE LBH 268P STANDARD 30U
YV 30U MR STAN SUNSHINE ET 31A
AGA 72M MISS SUNSHINE LAD 282P

DAM YV 35X ZAM 15Z
YV 15Z CRACKLIN ROSIE 21C
YV 232N SILVER LASS 924W

INDIVIDUAL PERFORMANCE

BW	205D	365D	DEC 2	RFI	F:G
91	567	1013	1671	-0.18	6.23

INDEX 96 93

INDIVIDUAL CARCASS DATA

RIBFAT	REA	%IMF	%LMY
0.24	0.97	1.82	61.10

INDIVIDUAL INFORMATION

AGE OF DAM	5
PIGMENT LEFT EYE	100
PIGMENT RIGHT EYE	100

EXPECTED PROGENY DIFFERENCE

CE	BW	WW	YW	MILK
3.2	3.3	48	72	15



YV 128G



YV 21C | DAM OF 128G



YV 42D | DAM OF 129G

YV 129G

129G YV 77C CREDITOR 129G

YV 129G | C03065055 | APR 20, 2019 | HORNED

SIRE AGA 18Y ZOOM STANDARD 18Z
AGA 18Z ZOOM STAN CREDITOR 77C
AGA 24W MISS GEN WILEY 144Y

DAM YV STAR STRUCK 915W
YV 915W DEVA ET 42D
YV 82R SILVER GAL 920W

INDIVIDUAL PERFORMANCE

BW	205D	365D	DEC 2	RFI	F:G
92	650	1117	1787	-0.64	5.46

INDEX 110 103

INDIVIDUAL CARCASS DATA

RIBFAT	REA	%IMF	%LMY
0.24	0.97	2.42	61.60

INDIVIDUAL INFORMATION

AGE OF DAM	4
PIGMENT LEFT EYE	100
PIGMENT RIGHT EYE	100

EXPECTED PROGENY DIFFERENCE

CE	BW	WW	YW	MILK
-1.3	5.6	48	70	17

136G YV 77C CREDITOR 136G

YV 136G | C03066542 | APR 29, 2019 | HORNED

SIRE AGA 18Y ZOOM STANDARD 18Z
AGA 18Z ZOOM STAN CREDITOR 77C
AGA 24W MISS GEN WILEY 144Y

DAM YV STAR STRUCK 915W
YV 915W SILVER STAR 54A
YV 82R SILVER STAN LASS 820U

INDIVIDUAL PERFORMANCE

BW	205D	365D	NOV 14	RFI	F:G
93	674	1123	1480	-	-

INDEX - -

INDIVIDUAL CARCASS DATA

RIBFAT	REA	%IMF	%LMY
0.22	1.00	1.94	62.60

INDIVIDUAL INFORMATION

AGE OF DAM	7
PIGMENT LEFT EYE	100
PIGMENT RIGHT EYE	100

EXPECTED PROGENY DIFFERENCE

CE	BW	WW	YW	MILK
-0.6	5.2	40	57	16



YV 46F | SISTER TO 136G

YV 136G



YV 5H

YV 27D | DAM OF 5H

5H

YV 7C MR SUNNY SPORT 5H

YV 5H | C03073274 | FEB 14, 2020 | HORNED

SIRE AGA 60W BANNER SPORT ZEAL 28Z
AGA 28Z CARGO SPORT 7C
AGA 2U MISS BRITISHER 210Z

DAM YV 30U MR STAN SUNSHINE ET 31A
YV 31A SUNNY LASS 27D
YV 15Z MS ZAM 30B

INDIVIDUAL PERFORMANCE

BW	205D	RFI	F:G
85	717	-0.2970	7.48

INDEX 105

EXPECTED PROGENY DIFFERENCE

CE	BW	WW	YW	MILK
8.0	2.0	44	64	19

INDIVIDUAL INFORMATION

AGE OF DAM	4
PIGMENT LEFT EYE	100
PIGMENT RIGHT EYE	100

10H

YV 28M MR GOLDEN NOVA 10H

YV 10H | C03073365 | FEB 16, 2020 | POLLED

SIRE EAGLE-RIDGE BLASTER ET 4J
GOLDEN-OAK 4J MAXIUM 28M
TA-BAR CHANTELE 15K

DAM NJW 73S W18 HOMEGROWN 8Y ET
YV 8Y MS NOVA GROWN ET 30F
YV 915W MS SUPER NOVA 74A

INDIVIDUAL PERFORMANCE

BW	205D	RFI	F:G
98	890	-0.2655	5.71

INDEX 131

EXPECTED PROGENY DIFFERENCE

CE	BW	WW	YW	MILK
-4.6	7.8	70	111	27

INDIVIDUAL INFORMATION

AGE OF DAM	2
PIGMENT LEFT EYE	100
PIGMENT RIGHT EYE	100



YV 10H

NJW 12A | SISTER OF 10H



CALVING EASE

YV 12H



YV 27D | GRAND DAM OF 12H

12H

YV 13F MR LIGHT CREDIT 12H

YV 12H | C03073367 | FEB 19, 2020 | HORNED

SIRE AGA 28Z CARGO SPORT 7C
YV 7C LIGHT CARGO 13F

YV 31A SUNNY LASS 27D

DAM AGA 18Z ZOOM STAN CREDITOR 77C
YV 77C MS CREDIT MAMMA 100F

YV 15Z MS ZAMS MAMMA 18C

INDIVIDUAL PERFORMANCE

BW	205D	RFI	F:G
71	684	-0.3637	8.11

INDEX 100

EXPECTED PROGENY DIFFERENCE

CE	BW	WW	YW	MILK
10.3	0.7	41	62	18

INDIVIDUAL INFORMATION

AGE OF DAM	2
PIGMENT LEFT EYE	50
PIGMENT RIGHT EYE	10

17H

YV 31A SUNSHINE STRUCK 17H

YV 17H | C03073424 | FEB 22, 2020 | HORNED

SIRE LBH 268P STANDARD 30U
YV 30U MR STAN SUNSHINE ET 31A

AGA 72M MISS SUNSHINE LAD 282P

DAM YV 915W SILVER STRUCK ET 42A
YV 42A MS SILVER STRUCK 112D

YV 148X MS SUPER LADY 36A

INDIVIDUAL PERFORMANCE

BW	205D	RFI	F:G
96	721	-0.3308	7.50

INDEX 106

EXPECTED PROGENY DIFFERENCE

CE	BW	WW	YW	MILK
-2.7	5.9	60	91	17

INDIVIDUAL INFORMATION

AGE OF DAM	4
PIGMENT LEFT EYE	75
PIGMENT RIGHT EYE	50



YV 17H



ALNK 282P | GRAND DAM OF 17H



YV 920W | GRAND DAM OF 22H

YV 22H

22H YV 39D MR DESIGNER 22H

YV 22H | C03073533 | FEB 24, 2020 | HORNED

SIRE
YV STAR STRUCK 915W
YV 915W DESIGNER ET 39D
YV 82R SILVER GAL 920W

DAM
YV 35X ZAM 15Z
YV 15Z ZAMANTHA 15D
YV 232N SILVER LASS 924W

INDIVIDUAL PERFORMANCE

BW	205D	RFI	F:G
101	672	0.0515	9.59

INDEX 99

EXPECTED PROGENY DIFFERENCE

CE	BW	WW	YW	MILK
-3.9	7.2	53	84	17

INDIVIDUAL INFORMATION

AGE OF DAM	4
PIGMENT LEFT EYE	100
PIGMENT RIGHT EYE	100

24H YV MR CREDIT STRUCK 24H

YV 24H | C03073535 | FEB 24, 2020 | HORNED

SIRE
AGA 18Y ZOOM STANDARD 18Z
AGA 18Z ZOOM STAN CREDITOR 77C
AGA 24W MISS GEN WILEY 144Y

DAM
YV 915W SILVER STRUCK LAD 37A
YV 37A SUN STRUCK 58E
YV 30U MS SUNSHINE ET 23A

INDIVIDUAL PERFORMANCE

BW	205D	RFI	F:G
82	630	-0.3634	6.10

INDEX 93

EXPECTED PROGENY DIFFERENCE

CE	BW	WW	YW	MILK
3.7	3.7	40	60	16

INDIVIDUAL INFORMATION

AGE OF DAM	3
PIGMENT LEFT EYE	100
PIGMENT RIGHT EYE	0



YV 46F | SISTER OF 24H

CALVING EASE

YV 24H



CALVING EASE

YV 25H



YV 30D | SISTER OF 25H

25H YV 4F MR SUNNY CREDIT 25H

YV 25H | C03073536 | FEB 24, 2020 | HORNED

SIRE AGA 18Z ZOOM STAN CREDITOR 77C
YV 77C CREDITOR 4F
YV 30U MS MAMA 44B

DAM YV 30U MR STAN SUNSHINE ET 31A
YV 31A MS SUNNY SKY 108F
YV 915W SKY LASS 55Y

INDIVIDUAL PERFORMANCE

BW	205D	RFI	F:G
64	643	-0.2056	8.14

INDEX 94

EXPECTED PROGENY DIFFERENCE

CE	BW	WW	YW	MILK
9.5	0.1	44	67	19

INDIVIDUAL INFORMATION

AGE OF DAM	2
PIGMENT LEFT EYE	100
PIGMENT RIGHT EYE	100

34H YV 234F MR FORTY CREEK 34H

YV 34H | C03073545 | FEB 28, 2020 | HORNED

SIRE BR 58Y STANDARD 213B
BR 213B FORTY CREEK 234F
BR 15Z LADY ET 153C

DAM YV 30U MR STAN SUNSHINE ET 31A
YV 31A MS SUN STRUCK 8E
YV 15Z MS ZAM STRUCK 19C

INDIVIDUAL PERFORMANCE

BW	205D	RFI	F:G
94	721	-0.2539	6.81

INDEX 106

EXPECTED PROGENY DIFFERENCE

CE	BW	WW	YW	MILK
-0.9	5.2	58	90	19

INDIVIDUAL INFORMATION

AGE OF DAM	3
PIGMENT LEFT EYE	100
PIGMENT RIGHT EYE	100



YV 34H



YV 8E | DAM OF 34H



CALVING EASE

YV 36H



YV 59F | DAM OF 36H

36H YV 4F MR CREDIT DESIGN 36H

YV 36H | C03073547 | FEB 29, 2020 | HORNED

SIRE AGA 18Z ZOOM STAN CREDITOR 77C
YV 77C CREDITOR 4F
YV 30U MS MAMA 44B

DAM YV 915W DESIGNER ET 39D
YV 39D MS DESIGNER 59F
YV MS ADMIRAL 76B

INDIVIDUAL PERFORMANCE

BW	205D	RFI	F:G
83	738	0.0011	8.65

INDEX 108

EXPECTED PROGENY DIFFERENCE

CE	BW	WW	YW	MILK
2.3	4.4	52	79	19

INDIVIDUAL INFORMATION

AGE OF DAM	2
PIGMENT LEFT EYE	100
PIGMENT RIGHT EYE	100

40H YV 234F MR FORTY CREEK 40H

YV 40H | C03073951 | MAR 2, 2020 | HORNED

SIRE BR 58Y STANDARD 213B
BR 213B FORTY CREEK 234F
BR 15Z LADY ET 153C

DAM YV 34W MAJOR MARK LAD 2Y
YV 2Y MS SUPERNOVA ET 6B
AGA 72M MISS SUNSHINE LAD 282P

INDIVIDUAL PERFORMANCE

BW	205D	RFI	F:G
98	659	0.0486	6.84

INDEX 97

EXPECTED PROGENY DIFFERENCE

CE	BW	WW	YW	MILK
-3.4	5.5	53	91	16

INDIVIDUAL INFORMATION

AGE OF DAM	6
PIGMENT LEFT EYE	100
PIGMENT RIGHT EYE	100



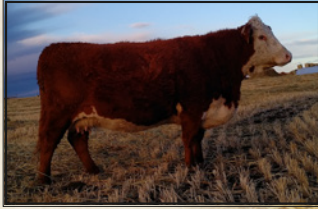
YV 40H



YV 6B | DAM OF 40H



YV 41H



YV 7X | GRAND DAM OF 41H

41H

YV 234F MR FORTY CREEK 41H

YV 41H | C03073952 | MAR 2, 2020 | HORNED

SIRE BR 58Y STANDARD 213B
BR 213B FORTY CREEK 234F
BR 15Z LADY ET 153C

DAM LBH 102T SUPER RIB 148X
YV 148X MS SNOOKIE 17C
YV 915W MS STAR SNOOKIE 38Y

INDIVIDUAL PERFORMANCE

BW	205D	RFI	F:G
89	691	-0.0259	7.20

INDEX 101

EXPECTED PROGENY DIFFERENCE

CE	BW	WW	YW	MILK
0.5	4.8	57	90	16

INDIVIDUAL INFORMATION

AGE OF DAM	5
PIGMENT LEFT EYE	100
PIGMENT RIGHT EYE	90

42H

YV 234F MR FORTY CREEK 42H

YV 42H | C03073953 | MAR 2, 2020 | HORNED

SIRE BR 58Y STANDARD 213B
BR 213B FORTY CREEK 234F
BR 15Z LADY ET 153C

DAM YV 35X ZAM 15Z
YV 15Z MS SILVER ZAM ET 37E
YV 915W SKY LASS 55Y

INDIVIDUAL PERFORMANCE

BW	205D	RFI	F:G
84	738	-0.0755	7.62

INDEX 108

EXPECTED PROGENY DIFFERENCE

CE	BW	WW	YW	MILK
1.1	4.2	59	93	21

INDIVIDUAL INFORMATION

AGE OF DAM	3
PIGMENT LEFT EYE	100
PIGMENT RIGHT EYE	100



YV 42H



YV 37E | GRAND DAM OF 42H



CALVING EASE

YV 43H



YV 27D | GRAND DAM OF 43H

43H

YV 13F MR SILVER CARGO 43H

YV 43H | C03073954 | MAR 2, 2020 | HORNED

SIRE AGA 28Z CARGO SPORT 7C
YV 7C LIGHT CARGO 13F
 YV 31A SUNNY LASS 27D

DAM AGA 18Z ZOOM STAN CREDITOR 77C
YV 77C MS SILVER CREDIT ET 56F
 YV 82R SILVER GAL 920W

INDIVIDUAL PERFORMANCE

BW	205D	RFI	F:G
77	700	-0.1435	9.26

INDEX 103

EXPECTED PROGENY DIFFERENCE

CE	BW	WW	YW	MILK
9.4	2.0	39	61	19

INDIVIDUAL INFORMATION

AGE OF DAM	2
PIGMENT LEFT EYE	100
PIGMENT RIGHT EYE	100

45H

YV 234F MR FORTY CREEK 45H

YV 45H | C03073956 | MAR 3, 2020 | HORNED

SIRE BR 58Y STANDARD 213B
BR 213B FORTY CREEK 234F
 BR 15Z LADY ET 153C

DAM YV 15Z STAN SKY LAD 78B
YV 78B MS DOUBLE ZAM 60E
 YV 15Z PRAIRIE ZAM LASS 55C

INDIVIDUAL PERFORMANCE

BW	205D	RFI	F:G
97	720	0.0705	7.47

INDEX 106

EXPECTED PROGENY DIFFERENCE

CE	BW	WW	YW	MILK
-0.2	5.8	58	94	17

INDIVIDUAL INFORMATION

AGE OF DAM	3
PIGMENT LEFT EYE	100
PIGMENT RIGHT EYE	100



YV 45H



BR 153C | GRAND DAM OF 45H



CALVING EASE

YV 55H



YV 80F | SISTER OF 59H

55H

YV 13F MR HOMECOMING CARGO 55H

YV 55H | C03075379 | MAR 8, 2020 | HORNED

SIRE

AGA 28Z CARGO SPORT 7C
YV 7C LIGHT CARGO 13F
 YV 31A SUNNY LASS 27D

DAM

NJW 73S W18 HOMEGROWN 8Y ET
YV 8Y HOMECOMING PRINCESS 120F
 YV 915W STAR PRINCESS 69Y

INDIVIDUAL PERFORMANCE

BW	205D	RFI	F:G
81	751	-0.1124	7.63

INDEX 110

EXPECTED PROGENY DIFFERENCE

CE	BW	WW	YW	MILK
5.8	3.1	52	83	26

INDIVIDUAL INFORMATION

AGE OF DAM	2
PIGMENT LEFT EYE	100
PIGMENT RIGHT EYE	50

59H

YV 7C MR SPORT 59H

YV 59H | C03074314 | MAR 9, 2020 | HORNED

SIRE

AGA 60W BANNER SPORT ZEAL 28Z
AGA 28Z CARGO SPORT 7C
 AGA 2U MISS BRITISHER 210Z

DAM

YV 35X ZAM 15Z
YV 15Z ZAMS GIRL 18D
 YV 30U MS STD STAR LASS 18B

INDIVIDUAL PERFORMANCE

BW	205D	RFI	F:G
96	693	0.1642	7.86

INDEX 102

EXPECTED PROGENY DIFFERENCE

CE	BW	WW	YW	MILK
3.6	3.2	45	67	17

INDIVIDUAL INFORMATION

AGE OF DAM	4
PIGMENT LEFT EYE	100
PIGMENT RIGHT EYE	100



YV 59H



YV 80F | SISTER OF 59H

MORE YV 2020 BORN BULL CALVES

TATTOO	BD	BW	DAM ID	SIRE ID	WEIGHT DEC 2/20	RFI	F:G	H/P
YV 2H	2020/02/12	87	YV 72F	BR 101D	693	*	*	H
YV 6H	2020/02/14	84	YV 87F	ALNK 7C	662	*	*	H
YV 8H	2020/02/16	86	YV 84D	ALNK 77C	925	*	*	H
YV 16H	2020/02/21	64	YV 70F	YV 4F	825	-0.4665	8.02	H
YV 19H	2020/02/23	88	YV 98D	BR 234F	835	-0.6820	5.13	H
YV 23H	2020/02/24	64	YV 62F	YV 4F	767	-0.2305	7.24	H
YV 27H	2020/02/24	82	YV 10B	YV 39D	819	*	*	H
YV 29H	2020/02/26	85	YV 43E	ALNK 77C	849	-0.1802	7.06	H
YV 74H	2020/02/28	85	YV 86B	Blk 105-X	923	-0.0963	7.79	P
YV 37H	2020/03/01	97	YV 35E	ALNK 77C	917	-0.3675	5.30	H
YV 38H	2020/03/01	95	YV 64E	ALNK 77C	813	-0.6193	6.41	H
YV 49H	2020/03/06	98	YV 110B	BR 234F	855	*	*	H
YV 50H	2020/03/06	86	YV 965W	BR 234F	783	-0.0186	8.84	H
YV 53H	2020/03/06	74	YV 76F	YV 13F	616	*	*	H
YV 64H	2020/03/10	63	YV 11E	ALNK 77C	657	*	*	H
YV 68H	2020/03/12	96	YV 46D	ALNK 77C	855	-0.1736	6.70	H
YV 69H	2020/03/13	96	YV 24B	BR 234F	753	0.0264	7.64	H
YV 70H	2020/03/13	80	YV 9F	YV 4F	769	*	*	H
YV 72H	2020/03/14	109	YV 27Z	BR 234F	843	-0.0161	7.42	H
YV 73H	2020/03/16	97	YV 73E	ALNK 77C	903	*	*	H
YV 76H	2020/03/19	76	YV 131F	YV 4F	843	-0.1912	5.39	H
YV 79H	2020/03/19	101	YV 29E	ALNK 77C	831	-0.6014	5.66	H
YV 80H	2020/03/21	70	YV 82F	YV 13F	644	-0.2202	8.94	H
YV 81H	2020/03/21	77	YV 31F	YV 4F	653	*	*	H
YV 82H	2020/03/21	81	YV 24C	BR 234F	761	-0.0756	6.32	H
YV 84H	2020/03/22	82	YV 27B	BR 234F	771	-0.1815	5.65	H
YV 87H	2020/03/23	85	YV 45X	ALNK 77C	705	-0.4392	6.72	H
YV 89H	2020/03/24	97	YV 10E	BR 234F	793	0.0533	6.22	H
YV 90H	2020/03/24	91	YV 69Y	BR 234F	761	-0.0506	5.27	H
YV 91H	2020/03/24	89	YV 65E	ALNK 77C	693	-0.3345	6.01	H

TATTOO	BD	BW	DAM ID	SIRE ID	WEIGHT DEC 2/20	RFI	F:G	H/P
YV 94H	2020/03/25	88	YV 17Y	BR 234F	699	-0.3202	6.52	H
YV 96H	2020/03/27	78	YV 920W	BR 234F	705	-0.3755	7.09	H
YV 98H	2020/03/28	74	YV 89F	YV 13F	690	*	*	H
YV 100H	2020/03/30	95	YV 62Z	ALNK 77C	761	-0.2795	6.46	H
YV 104H	2020/03/31	101	YV 18C	YV 39D	601	*	*	H
YV 105H	2020/03/31	95	YV 48A	BR 234F	805	-0.1501	7.42	H
YV 106H	2020/04/01	81	YV 13A	BR 234F	723	-0.4106	6.70	H
YV 108H	2020/04/01	88	YV 18E	ALNK 77C	618	*	*	H
YV 110H	2020/04/02	94	YV 38A	YV 39D	825	*	*	H
YV 111H	2020/04/02	84	YV 102C	BR 234F	630	0.0228	9.55	H
YV 115H	2020/04/06	86	YV 79B	BR 101D	757	0.2381	6.91	H
YV 116H	2020/04/06	98	YV 26E	ALNK 77C	667	-0.2796	7.39	H
YV 118H	2020/04/06	101	YV 7B	ALNK 77C	703	-0.3890	6.54	H
YV 119H	2020/04/07	106	YV 81Z	BR 234F	815	-0.1447	5.71	H
YV 123H	2020/04/08	98	YV 729T	BR 234F	647	-0.3993	6.18	H
YV 125H	2020/04/11	82	YV 976W	BR 101D	659	0.1471	8.64	H
YV 126H	2020/04/11	79	YV 56D	ALNK 77C	601	*	*	H
YV 129H	2020/04/15	91	YV 2E	BR 234F	697	-0.1645	6.16	H
YV 130H	2020/04/18	100	YV 904W	YV 37Z	659	*	*	H
YV 132H	2020/04/18	79	YV 79E	BR 101D	613	*	*	H
YV 135H	2020/04/20	82	YV 21C	BR 101D	624	-0.0898	7.09	H
YV 137H	2020/04/21	91	YV 92D	ALNK 77C	675	-0.4650	5.57	H
YV 138H	2020/04/23	76	YV 33D	BR 101D	745	0.2289	7.17	H
YV 140H	2020/04/24	90	YV 83B	YV 37A	721	*	*	H
YV 141H	2020/04/24	71	YV 38F	YV 13F	635	*	*	H
YV 142H	2020/04/24	82	YV 23C	ALNK 77C	609	-0.5754	9.04	H
YV 143H	2020/04/25	94	YV 76B	YV 37A	624	-0.0474	6.92	H
YV 145H	2020/05/01	77	YV 56E	BR 101D	625	0.2906	8.78	H
YV 146H	2020/05/01	70	YV 137F	YV 13F	605	*	*	H

* RFI and F:G data being collected January 2021

YV RANCH
NELS & TERRI NIXDORFF
280201 TWP Rd 270
Rocky View County, AB T4A 2T2

CANADA		POSTES
POST		CANADA
	Postage paid Personalized Mail	Port payé Courrier personnalisé
	8948674	
RETURN POSTAGE GUARANTEED PORT DE RETOUR GARANTI		



Time Sensitive Material

◆ YV RANCH ◆

AIRDRIE, ALBERTA
WWW.YVRANCH.CA